

綜合型錄  
TOOLING SYSTEM

**VOL.2** [www.annwaytools.com.tw](http://www.annwaytools.com.tw)



# TOOLING SYSTEM

ANN WAY

安威機具自1979年成立以來，堅持品質、以客為尊的誠信經營，已凝聚成一股以品質為上策的企業精神。秉持著創新突破的精神，安威持續在產品上精進提昇；近年來，為符合國際市場數控機械、高精密、高轉速的需求，成功研發出高速切削ASK、ADS、ASG、AVC等系列產品，能充分配合高轉速切削刀具，目前已廣泛應用於平衡度高、精度好的精密機械。另外，在粗搪、精搪、大小口徑搪頭方面，亦持續推出多樣化產品，廣受業界好評。更重要的是，安威擁有國際標準規格的檢驗模具BT、HSK、DIN、ANSI，使產品更能合乎國際市場的嚴苛要求。而於2003年通過ISO9001認證，亦使得安威在品質掌控、行政與生產管理、客戶服務與技術支援等各方面，確實發揮加乘效果。優質的產品深得國內外客戶肯定，成功行銷美國、加拿大、義大利、英國、德國、法國、澳洲、瑞士等全球多個國家。

『用實力證明價值，以實績創造品牌』，安威持續以一種打造機械配件精工品質的態度，踩著穩健的步伐，邁向企業永續經營之路！



*Holding Your Future*



Ann Way Machine Tools Co., Ltd. was founded in 1979. We manufacture cutting tools and cutting tool holders for conventional and CNC machine tools.

Our main products include,

- Boring and milling cutting tools
- ER collet chucks
- Milling chucks
- Keyless drill chucks
- ER, OZ, SC collet chucks
- Boring chucks
- BT, HSK, DIN, ANSI testing tools

Our ASK, ADS, AVC and ASG series products meet the demands of high speed, high precision machining.

We have invested heavily over the years in our own manufacturing facilities and are ISO9001 certified. Our R&D department is always active and ready to offer new high quality products. You can find Ann Way cutting holders and cutting tools in the USA, Canada, the UK, Germany, France, Switzerland, Italy, Australia, Turkey and Southeast Asia. We actively keep innovating, developing, and enterprising to offer good product quality and serve all customers.

**ANN WAY**   
www.annwaytools.com.tw



**P.001** AMG Double Power Chuck  
超倍力夾頭刀桿



**P.002** ASG High Speed Milling Chuck  
高轉速強力銑刀夾頭刀桿



**P.003** ASC High Speed Milling Chuck  
高轉速強力銑刀夾頭刀桿



**P.004** ASC Milling Chuck  
強力銑刀夾頭刀桿  
BT/NT series



**P.005** ASC Milling Chuck  
強力銑刀夾頭刀桿  
MTA/R3 series



**P.005** SC Collet/Collet Set/Wrench  
直束筒夾 / 筒夾組 / 扳手



**P.007** ER Spring Collet Chuck  
彈性筒夾本體



**P.008** ER Spring Collet Chuck  
彈性筒夾本體  
NT/MTA/MTB series



**P.009** ER Spring Collet Chuck  
彈性筒夾本體  
Straight Shank/R3/JT series



**P.010** MER Spring Collet Chuck  
彈性筒夾本體



**P.011** ERA High Speed Collet Chuck/  
Nut/Wrench  
高速彈性筒夾本體 / 螺帽 / 扳手



**P.012** ER Spring Collet  
彈性筒夾



**P.013** ER collet for End Mill/  
Coolant Type  
立銑刀專用筒夾 /  
止水型筒夾



**P.014** ER-GB Tap Collet  
攻牙筒夾



**P.015** ER Spring Collet Set  
彈性筒夾組



**P.016** ER Clamping Nut  
螺帽



**P.017** ER Wrench  
扳手



**P.018** ASK High Speed Collet Chuck  
高轉速精密筒夾本體



**P.020** SK High Speed Collet/Collet  
Set/Extractor  
精密筒夾 / 筒夾組 / 裝取器



**P.024** ASK Wrench  
扳手



# Contents

## 2

**P.025** ASK Nut/Coolant Type  
螺帽 / 止水型螺帽



**P.026** AVC High Speed Collet Chuck/  
Collet/Wrench  
高轉速高精度立銑刀本體 /  
筒夾 / 扳手



**P.028** AVC Nut/Coolant NUT  
螺帽 / 出水螺帽



**P.029** ADS High Speed Collet Chuck  
後拉式筒夾本體



**P.030** ADS Straight Shank/Collet  
直柄後拉式夾頭刀桿 / 筒夾



**P.031** LDS High Speed Collet Chuck/  
Collet  
後拉式筒夾刀桿 - 筒夾加長  
型 / 加長型筒夾



**P.032** ASR Shrink Chuck/Curved Type  
燒結式刀桿 / 曲線型



**P.033** ASR Shrink Chuck Coolant Type/  
Straight Shank  
出水型 / 直柄 燒結式刀桿



**P.034** Induction Shrink Machine  
感應熱縮式燒結機



**P.035** OZ Collet Chuck  
重切削筒夾本體  
BT/NT/NTA/R3 series



**P.036** OZ Collet/Collet Set/Nut/  
Wrench  
重切削筒夾 / 筒夾組 / 扳手



**P.037** SLA End Mill Holder / T Type  
側固端銑刀桿 / T 型



**P.039** SLC End Mill Holder-Jet  
Through Coolant Type  
側固端銑刀桿 - 端面出水型



**P.040** SLA End Mill Holder  
側固端銑刀桿  
NT/R3 series



**P.041** BM End Mill Holder-Weldon  
側固端銑刀桿 (歐規)



**P.042** APU Drill Chuck Holder  
直截式鑽夾頭刀桿



**P.043** APU Drill Chuck Holder  
直截式鑽夾頭刀桿  
NTA/Straight Shank/R3 series



**P.044** JTA Drill Chuck Holder  
鑽夾頭刀桿  
BT/NT series



**P.045** JTA Drill Chuck Holder  
鑽夾頭刀桿  
NTA/Straight Shank/R3 series



**P.045** #122 #123 Keyless Drill Mount  
鑽夾頭



**P.046** MTA Morse Taper Holder  
**047** 莫氏錐度刀桿

BT/NT/R3 series



**P.047** Morse Taper Sleeve/Extension/  
**048** Straight Shank

莫氏錐頭套筒 / 延長套筒 /  
直柄套筒



**P.049** MTB Morse Taper Holder/  
Extension Pull Stud

莫氏錐度刀桿 / 專用長拉頭



**P.050** TPM Tension & Compression  
Tap Holder

扭力伸縮攻牙本體  
BT/NT series



**P.051** TPM Tension & Compression  
Tap Holder

扭力伸縮攻牙本體  
MTA/Straight Shanks serie



**P.051** TPM Tap Collet  
**052** 扭力絲攻筒夾



**P.053** Tap Holder  
筒式攻牙本體



**P.053** TPG875 Tap Holder/Collet/  
**054** Adapter

伸縮攻牙本體 / 絲攻筒夾 / 轉換器



**P.054** Vertical AirTapping Machine  
氣動工牙機



**P.055** ART Right Tap Holder  
剛性攻牙本體



**P.055** ATP Tension & Compression  
Tap Holder

伸縮攻牙本體  
BT/Straight Shank series



**P.056** ATC Tap Collet  
**057** 扭力絲攻筒夾



**P.058** TER Tension & Compression  
Tap Holder

剛性伸縮攻牙本體  
BT/Straight Shank series



**P.059** WER Synchro Tap Holder  
同步攻牙本體

BT/Straight Shank series



**P.060** WASK Synchro Tap Holder  
同步攻牙本體

BT/Straight Shank series



**P.061** DT24/33 Drill Taper Set  
**062** 旋臂鑽床攻牙組



**P.063** DT52 Drill Taper Series  
旋臂鑽床攻牙系列



**P.064** FMA Face Mill Holder  
**065** 平面銑刀桿

BT/NT/R3 series



**P.066** FMB Face Mill Holder  
**067** 平面銑刀桿

BT/NT/R3 series



**P.068** FMA/FMB Face Mill Holder-  
Straight Shank  
直柄平面銑刀桿



# Contents

## 4

**P.069** FMH Face Mill Holder-  
Coolant Type  
出水型平面銑刀桿



**P.070** SMA Shell Mill Holder  
筒狀銑刀桿



**P.073** BCK Boring Holder  
074  
銑孔刀桿  
BT/NT series



**P.075** BCK Micro Boring Head/  
076  
Spare Parts  
微調銑孔頭 / 備用零件



**P.077** Adapter+BCK Micro Boring  
-079  
Head  
接桿



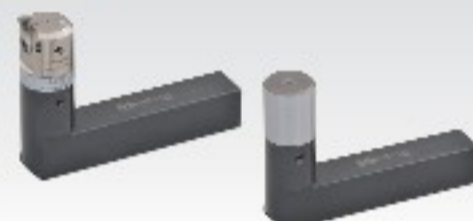
**P.080** ZBCK/BCK Large Boring Holder  
大孔徑銑刀桿



**P.081** ZBCK/BCK Large Micro Boring  
Head  
大孔徑精銑刀頭



**P.082** BCK Square Boring Holder  
方型精銑刀頭



**P.083** ZACK Boring Holder  
084  
銑孔刀桿  
BT/NT series



**P.085** ZACK Adjustable Balance Cutter  
排齒式可調粗銑刀頭



**P.086** Adapter+ZACK Boring Head  
-088  
接桿



**P.089** ZACK Large Boring Holder  
大孔徑銑刀桿



**P.090** ZACK Adjustable Balance Cutter  
大孔徑排齒式可調粗銑刀頭



**P.091** ACK Boring Holder  
092  
銑孔刀桿



**P.093** ACK Adjustable Balance Cutter  
雙刃粗銑刀頭



**P.094** Adapter+ACK Boring Head  
-096  
接桿



**P.097** BST Boring Holder/  
Adjustable Balance Cutter  
大口徑雙刃粗銑刀桿 / 刀頭



**P.098** Tips For ACK Cutter  
ACK 粗銑刀頭用刀片



**P.099** TB Fixed Rough Boring Bar  
100  
固定式粗銑刀桿



**P.101** SCA Side Cutter Holder  
側銑刀桿



**P.102 SCA Side Cutter Holder**  
側銑刀桿  
NT/Straight Shank series



**P.102 HMA Horizontal Mill Arbor**  
橫銑刀桿  
BT/NT series



**P.103 BSA Boring Holder**  
粗磨刀桿  
BT/NT series



**P.105 BSA Boring Holder**  
粗磨刀桿



**P.106 BSB Boring Holder**  
粗磨刀桿  
BT/NT series



**P.108 BSB Boring Holder**  
粗磨刀桿



**P.109 BST Large Size Boring Holder/  
Boring Block**  
大孔徑粗磨刀桿 / 刀盤



**P.110 Throw Away Boring Cutter**  
捨棄式磨刀架



**P.111 Micro Boring Holder**  
微調精磨刀桿



**P.112 MBT Square Micro Boring  
Holder**  
方型精磨刀桿



**P.113 BCT Large Micro Boring Holder/  
Boring Block**  
大孔徑滑板式精磨刀桿 /  
刀盤



**P.114 R/L 148C Fine Boring Head/  
TSA Adapter**  
精磨頭 / 轉接器



**P.115 AMD Screw-in Endmill Holder/  
End Mills**  
圓刃銑刀桿 / 銑刀



**P.116 RD Corner Rounding End Mills/  
Inserts**  
圓刃銑刀桿 / 刀片



**P.118 ABH Fine Boring Head (KKS)**  
日製微調精磨頭



**P.119 ABH Rough/Fine Boring Head  
(Taiwan)**  
台製粗 / 微調精磨頭



**P.120 ABH Micro Boring Holder**  
微調精磨刀桿  
BT/NT series



**P.122 ABH Micro Boring Holder**  
微調精磨刀桿  
NTA series



**P.123 ABJ Modular Micro Boring  
Holder/Head**  
小徑微調磨刀桿 / 刀頭



**P.124 BJ Boring Bar/Boring Bar Set**  
磨刀 / 磨刀組



# Contents

6

P.125 **ABJ Boring Head/Spare Parts**  
126 搪孔刀頭 / 配件



P.127 **BM1625 Micro Boring Holder**  
精搪刀桿



P.128 **NBH2084 Micro Boring System/  
BJ20 Boring Bar Set**  
微調搪孔系統 / 搪刀組



P.129 **HBOR50/63 Micro Boring  
System**  
微調搪孔系統組



P.131 **HBOR63-BM140 Micro  
Boring Holder**  
精搪刀桿



P.132 **HBOR Micro Boring Holder**  
極細微調精搪孔刀桿



P.133 **HBOR Adapter**  
接桿



P.134 **ERO Oil-Feed Holder**  
油路刀桿



P.134 **SLO Oil-Feed Holder/Sleeve/  
Block**  
油路刀桿 / 刀套 / 止動塊



P.135 **TA Test Bar**  
測試棒  
BT/NT/R8 series



P.136 **ISO Balanced Tool Holder**  
木工機專用刀桿  
ER/ASK/ADS Type



P.137 **ISO Balanced Tool Holder**  
木工機專用刀桿  
OZ/FMA Type



P.137 **ISO Locking Device**  
鎖刀座



P.138 **NBT Without Keyway Holder**  
139 無鍵槽刀桿  
ER/ASK/ADS/APU Type



P.140 **AMG Double Power Chuck**  
超倍力夾頭刀桿  
HSK-A Type series



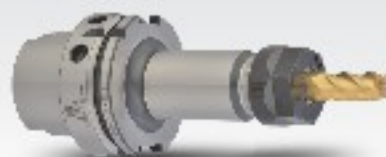
P.140 **ASG High Speed Milling Chuck**  
高轉速強力銑刀夾頭刀桿  
HSK-A Type series



P.141 **ASC High Speed Milling Chuck/  
Milling Chuck**  
高轉速 / 強力銑刀夾頭刀桿  
HSK-A Type series



P.142 **ER Spring Collet Chuck**  
彈性筒夾本體  
HSK-A Type series



P.143 **MER Spring Collet Chuck**  
彈性筒夾本體  
HSK-A Type series



P.144 **ERA High Speed Collet Chuck**  
高速彈性筒夾本體  
HSK-A Type series





**P.144** AMD Screw-in Endmill Holder  
圓刀銑刀桿  
HSK-A Type series



**P.145** ASK High Speed Collet Chuck  
高轉速精密筒夾本體  
HSK-A Type series



**P.145** A/C High Speed Collet Chuck  
高轉速高精度立銑刀本體  
HSK-A Type series



**P.146** ADS High Speed Collet Chuck  
後拉式夾頭刀桿  
HSK-A Type series



**P.147** ASR Shrink Chuck/Curved/  
Collant Type  
燒結式刀桿 / 曲線型 / 出水型  
HSK-A Type series



**P.148** SLA/SLC End Mill Holder  
側固端銑刀桿 / 出水型  
HSK-A Type series



**P.149** EM End Mill Holder-Weldon  
側固端銑刀桿 (歐規)  
HSK-A Type series



**P.150** APU Drill Chuck Holder  
MTA Morse Taper Holder  
直截式鑽夾頭刀桿  
莫氏銼銑刀桿 HSK-A Type series



**P.151** FMA/FMB/FMH Face Mill  
Holder  
平面銑刀桿  
HSK-A Type series



**P.152** TPM/ART/ATP Tap Holder  
攻牙本體  
HSK-A Type series



**P.153** WER/WASK Synchro Tap Holder  
同步攻牙本體  
HSK-A Type series



**P.154** BCK/ACK/ZACK Boring Holder  
155  
銹孔刀桿  
HSK-A Type series



**P.155** ABJ Modular Micro  
Boring Holder  
微調銹孔刀桿  
HSK-A Type series



**P.156** HBOR50/63 Micro Boring  
System  
微調銹孔系統組  
HSK-A Type series



**P.157** ASK/ADS High Speed Collet  
Chuck  
高轉速精密筒夾 / 後拉式夾頭  
刀桿 HSK-E Type series



**P.158** ER Collet Chuck/  
ASR Shrink Chuck  
彈性筒夾本體 / 燒結式刀桿  
HSK-E Type series



**P.159** A/C High Speed Collet Chuck  
高轉速高精度立銑刀本體  
HSK-E Type series



**P.159** AMD/SLA End Mill Holder  
圓刀銑刀桿 / 側固端銑刀桿  
HSK-E Type series



**P.160** ER/ASK Collet Chuck  
彈性 / 高轉速精密筒夾本體  
HSK-F Type series



**P.161** ADS High Speed Collet Chuck  
後拉式夾頭刀桿  
HSK-F Type series



# Contents

8

P.162 TA Test Bar/Coolant Supply Unit  
HSK 測試棒 / 專用冷卻液管



P.162 HSK Locking Device  
鑽刀座



P.163 AMG Double Power Chuck  
超倍力夾頭刀桿  
SK-DIN69871A series



P.164 ASG/ASC Milling Chuck  
高轉速 / 強力銑刀夾頭刀桿  
SK-DIN69871A series



P.165 ER/ERA Collet Chuck  
彈性 / 高速彈性筒夾本體  
SK-DIN69871A series



P.166 MER Spring Collet Chuck  
彈性筒夾本體  
SK-DIN69871A series



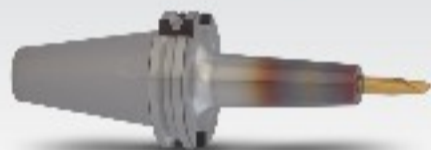
P.167 ASK High Speed Collet Chuck  
高轉速精密筒夾本體  
SK-DIN69871A series



P.168 AVQ/ADS High Speed Collet Chuck  
高轉速高精度立銑刀桿 / 後拉式夾頭刀桿 SK-DIN69871A series



P.169 ASR Shrink Chuck  
燒結式刀桿  
SK-DIN69871A series



P.170 OZ Collet Chuck/EM End Mill Holder  
重切削筒夾本體 / 側固端銑刀桿  
SK-DIN69871A series



P.171 APU/B Type Drill Chuck Holder  
直載式 / 鑽夾頭刀桿  
SK-DIN69871A series



P.172 MTA/MTB Morse Taper Holder/  
Extension Pull Stud  
莫氏錐度刀桿 / 專用長拉頭  
SK-DIN69871A series



P.173 TPM/ART/ATP Tap Holder  
攻牙本體  
SK-DIN69871A series



P.174 TER Tension & Compression Tap Holder  
剛性伸縮攻牙本體  
SK-DIN69871A series



P.175 FMB/CS Face Mill Holder  
平面 / 殼型銑刀桿  
SK-DIN69871A series



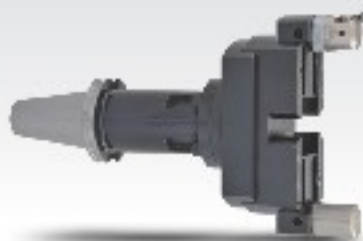
P.176 BCK Boring Holder  
搪孔刀桿  
SK-DIN69871A series



P.177 ZACK/ACK Boring Holder  
17B  
搪孔刀桿  
SK-DIN69871A series



P.179 ZBCK/BCK Large Boring Holder  
大孔徑精搪刀桿  
SK-DIN69871A series



P.180 ZACK/ACK Large Boring Holder  
大孔徑粗搪刀桿  
SK-DIN69871A series



P.181 BSA/BSB Boring Holder  
182  
粗搪刀桿  
SK-DIN69871A series



**P.183** **BCA Micro Boring Holder**  
184  
微調精磨刀桿  
SK-DIN69871A series



**P.184** **BCT Large Micro Boring Holder**  
大孔徑滑板式精磨刀桿  
SK-DIN69871A series



**P.185** **ABH Micro Boring Holder**  
微調精磨刀桿  
SK-DIN69871A series



**P.186** **ABJ/NBH Micro Boring Holder**  
小徑 / 微調磨孔刀桿  
SK-DIN69871A series



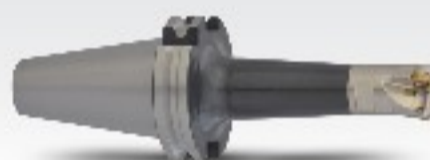
**P.187** **HBOR5Q/63 Micro Boring System**  
微調磨孔系統組  
SK-DIN69871A series



**P.188** **ERO/SLO Oil-Feed Holder**  
油路刀把  
SK-DIN69871A series



**P.189** **AMD Screw-in End Mill Holder**  
圓刀銼刀桿  
SK-DIN69871A series



**P.189** **TSA Adapter/TA Test Bar**  
轉接器 / 測試棒  
SK-DIN69871A series



**P.190** **ASC Milling Chuck/ER Collet Chuck**  
強力銼刀桿 / 彈性筒夾本體  
SK-DIN2080 series



**P.191** **OZ Collet Chuck/EM End Mill Holder**  
重切削筒夾本體 / 側固端銼刀桿  
SK-DIN2080 series



**P.192** **APU/B Type Drill Chuck Holder**  
直截式 / 鑽夾頭刀桿  
SK-DIN2080 series



**P.193** **MTA/MTB Morse Taper Holder**  
莫氏錐度刀桿  
SK-DIN2080 series



**P.194** **FMB/CS Face Mill Holder**  
平面 / 鼓型銼刀桿  
SK-DIN2080 series



**P.195** **ASC Milling Chuck/Collet/Wrench**  
強力銼刀夾頭刀桿 / 筒夾 / 扳手  
CAT series



**P.196** **ER Spring Collet Chuck**  
197  
彈性筒夾本體  
CAT/Straight Shank series



**P.198** **MER Spring Collet Chuck**  
彈性筒夾本體  
CAT series



**P.199** **ERA High Speed Collet Chuck**  
高速彈性筒夾本體  
CAT series



**P.199** **ASK High Speed Collet Chuck**  
高轉速精密筒夾本體  
CAT series



**P.200** **ASR Shrink Chuck**  
燒結式刀桿  
CAT series



**P.201** **OZ/TG100 Collet Chuck**  
重切削筒夾本體  
CAT series



# Contents

## 10

**P.202** EM End Mill Holder  
**203** 側固端銑刀桿  
 CAT series



**P.204** APU/JTA Drill Chuck Holder  
 直載式 / 鑽夾頭刀桿  
 CAT series



**P.205** MTA Morse Taper Holder  
 莫氏錐度刀桿  
 CAT series



**P.205** TPM Tension & Compression Tap Holder  
 扭力伸縮攻牙本體  
 CAT series



**P.206** TER Tension & Compression Tap Holder  
 剛性伸縮攻牙本體  
 CAT series



**P.207** FMA Face Mill Holder  
 平面銑刀桿  
 CAT series



**P.208** BCK Boring Holder  
 銹孔刀桿  
 CAT series



**P.209** ZACK/ACK Boring Holder  
**210** 銹孔刀桿  
 CAT series



**P.211** ABJ/NBH Micro Boring Holder  
 小徑 / 微調銹孔刀桿  
 CAT series



**P.212** HBOR50,63 Micro Boring System  
 微調銹孔系統組  
 CAT series



**P.213** ERO Oil-Feed Holder/Test Bar  
 油路刀把 / 測試棒  
 CAT series



**P.214** ASG High Speed Milling Chuck  
 高轉速強力銑刀夾頭刀桿  
 ABT series



**P.215** ASC High Speed Milling Chuck  
 高轉速強力銑刀夾頭刀桿  
 ABT series



**P.216** ER Spring Collet Chuck  
 彈性筒夾本體  
 ABT series



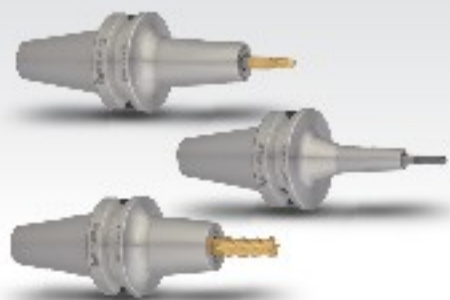
**P.217** ASK High Speed Collet Chuck  
 高轉速精密筒夾本體  
 ABT series



**P.218** A/C High Speed Collet Chuck  
 高轉速高精度立銑刀本體  
 ABT series



**P.219** ADS High Speed Collet Chuck  
 後拉式夾頭刀桿  
 ABT series



**P.220** SLA End Mill Holder  
 側固端銑刀桿  
 ABT series



**P.221** FMA/FMB Face Mill Holder  
 平面銑刀桿  
 ABT series



**P.222** BH/DCMWN Turning Holder  
 車銹複合式刀桿  
 HSK-T series



**P.223** SE4R45/SE545 Face Mill Cutter  
面铣刀盤



**P.224** TPR/RD Face Mill Cutter  
面铣 / 圓刀刀盤



**P.225** WCMX Rapid Drills  
~227  
Throw-Away Inserts  
捨棄式快速鑽頭



**P.227** A.T.C. Modular Concentricity  
Test Gauge  
三點組合模貝



**P.228** Mechanica/Ceramic/Rotary  
Edge Finder  
機械 / 陶瓷 / 迴轉式 尋邊器



**P.229** High Sensitive Electronic Edge  
Finder  
光電式尋邊器



**P.229** 3D Sensor-Haimer  
萬向尋邊器



**P.230** Z-Zero Setter  
Z軸測定器



**P.231** Tool Stand/Tool Sheath  
刀具架 / 刀具盒



**P.231** Tool Trolley  
刀具車



**P.232** Tool Locking Device  
立臥兩用鑽刀座



**P.232** Spindle Taper Wipers  
主軸清潔棒



**P.232** CK Clamping Kit  
萬能夾具組



**P.233** Machine Vise  
~235  
虎鉗



**P.235** Artistic Drill Re-Sharpening  
Machine  
鑽頭研磨機



**P.236** Tool Presetter  
刀具預調儀



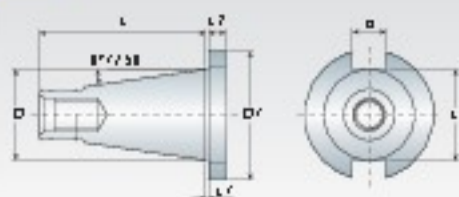
**P.237** Sleeve/Cabinet For  
Tool Presetter  
刀具預調儀用套筒 / 儲存櫃



**P.238** Pull Stud  
~240  
拉頭



**P.241** Technical Information  
~245

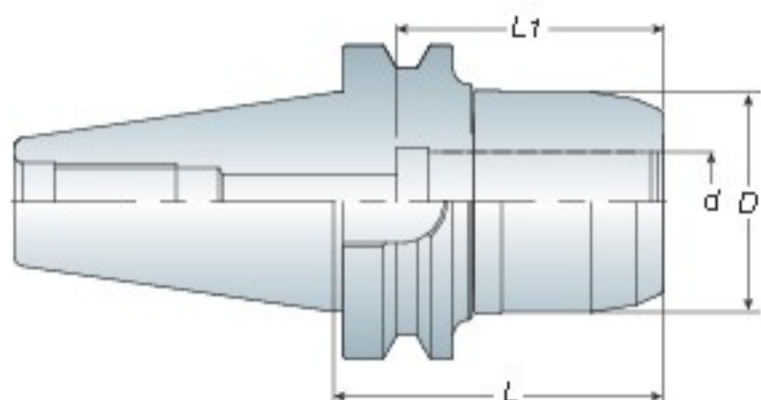


**BT / NT**  
series

**AMG**

## Double Power Chuck

超倍力夾頭刀桿



Jet through  
端面出水



### Features

- AMG tooling system is suitable for high speed and heavy cutting simultaneously.
- AMG tooling system is special designed for coolant type - JET THROUGH.
- High precision clamping because of the design of needle roller bearing.
- The spacer could make the flange & nut be tightened and provide exceptional rigidity.
- Clamping the tools without collet is excellent for heavy cutting.
- Wrench must be ordered separately.
- Balancing: 30,000 r.p.m G2.5
- AMG 刀桿系列可同時在高速切削及重切削上使用
- AMG 刀具系列為端面給油設計
- 刀桿採用針狀軸承設計，夾持度極佳
- 螺帽透過墊片與本體貼合使之提高剛性
- 在沒有使用筒夾的情況下，直接夾持刀具，重切削效果最佳
- 扳手為另購品
- 動平衡：30,000 r.p.m G2.5

Model No.	d	D	L	L1	Wrench	Weight (kg)
BT30 AMG12-080	12	46	80	67	WAMG12	1.10
AMG16-095	16	54	95	60	WAMG16	1.30
AMG20-095	20	58	95	70	WAMG20	1.60
AMG25-100	25	62	100	90	WAMG25	1.80
AMG32-095	32	70	95	90	WAMG32	2.00
BT40 AMG12-080	12	46	80	67	WAMG12	1.60
-105	12	46	105	67	WAMG12	2.00
AMG16-080	16	54	80	60	WAMG16	1.80
-105	16	54	105	60	WAMG16	2.30
AMG20-095	20	58	95	70	WAMG20	2.00
-105	20	58	105	70	WAMG20	2.30
AMG25-095	25	62	95	90	WAMG25	2.20
AMG32-090	32	70	90	90	WAMG32	2.30
-105	32	70	105	90	WAMG32	2.60
BT50 AMG12-105	12	46	105	67	WAMG12	4.60
-135	12	46	135	67	WAMG12	5.10
-165	12	46	165	67	WAMG12	5.80
AMG16-105	16	54	105	60	WAMG16	4.90
-135	16	54	135	60	WAMG16	5.50
-165	16	54	165	60	WAMG16	6.50
AMG20-105	20	58	105	70	WAMG20	4.90
-135	20	58	135	70	WAMG20	5.60
-165	20	58	165	70	WAMG20	6.50
AMG25-105	25	62	105	90	WAMG25	4.90
-135	25	62	135	90	WAMG25	5.70
-165	25	62	165	90	WAMG25	6.70
AMG32-105	32	70	105	90	WAMG32	5.00
-135	32	70	135	90	WAMG32	5.80
-165	32	70	165	90	WAMG32	6.70

Unit: mm



- AMG Double Power Chuck with nut for C-WRENCH is available.
- Please change name from AMG to AMC of each model no. when ordering.
- 螺帽部分為 C 型系列，訂購時，請更改品名為 AMC
- Example: BT40 AMC16-080



P6-Wrench



P6-SC Collet

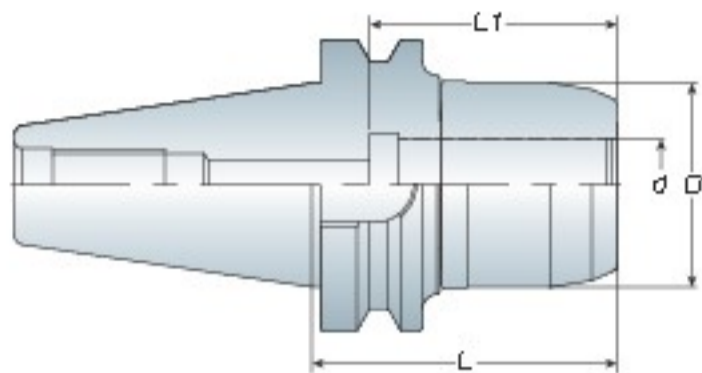
# High Speed Milling Chuck

高轉速強力銑刀夾頭刀桿

# ASG

# BT / NT

series



## Features

- ASG tooling system is suitable for high speed and high precision cutting.
- When using without collet, ASG tooling system is designed for coolant type - THROUGH TOOLS.
- Dust-proof design could extend tool holder lifetime.
- Wrench must be ordered separately.
- Balancing: 30,000 r.p.m G2.5
- ASG 刀具系列適用於高轉速、高精密切削加工，切削效果佳
- 在沒有搭配筒夾的情況下使用，ASG 刀具系列為刀尖給油設計
- 特殊防塵設計，提升刀桿壽命
- 扳手為另購品
- 動平衡：30,000 r.p.m G2.5

Model No.	Clamping Range	d	D	L	L1	Collet Type	Weight (kg)
BT30 ASG12 070	3~12	12	35	70	-	SC12	1.10
ASG16 080	3~16	16	46	80	65	SC16	1.10
ASG20 085	4~20	20	54	85	72	SC20	1.40
BT40 ASG12 080	3~12	12	35	80	-	SC12	1.40
095	3~12	12	35	95	-	SC12	1.50
120	3~12	12	35	120	-	SC12	1.80
ASG16 080	3~16	16	46	80	65	SC16	1.60
105	3~16	16	46	105	65	SC16	2.00
135	3~16	16	46	135	65	SC16	2.40
ASG20 080	4~20	20	54	80	72	SC20	1.80
105	4~20	20	54	105	72	SC20	2.30
135	4~20	20	54	135	72	SC20	2.90
ASG25 090	6~25	25	58	90	85	SC25	2.00
120	6~25	25	58	120	85	SC25	2.60
ASG32 105	6~32	32	68	105	95	SC32	2.40
135	6~32	32	68	135	95	SC32	3.20
BT50 ASG12 090	3~12	12	35	90	-	SC12	4.10
110	3~12	12	35	110	-	SC12	4.30
135	3~12	12	35	135	-	SC12	4.40
ASG16 090	3~16	16	46	90	65	SC16	4.40
110	3~16	16	46	110	65	SC16	4.70
135	3~16	16	46	135	65	SC16	4.90
150	3~16	16	46	150	65	SC16	5.20
ASG20 090	4~20	20	54	90	72	SC20	4.50
110	4~20	20	54	110	72	SC20	5.00
135	4~20	20	54	135	72	SC20	5.30
150	4~20	20	54	150	72	SC20	5.40
ASG25 110	6~25	25	58	110	85	SC25	5.00
150	6~25	25	58	150	85	SC25	5.40
ASG32 110	6~32	32	68	110	95	SC32	5.10
150	6~32	32	68	150	95	SC32	6.40

Unit: mm



P6-Wrench

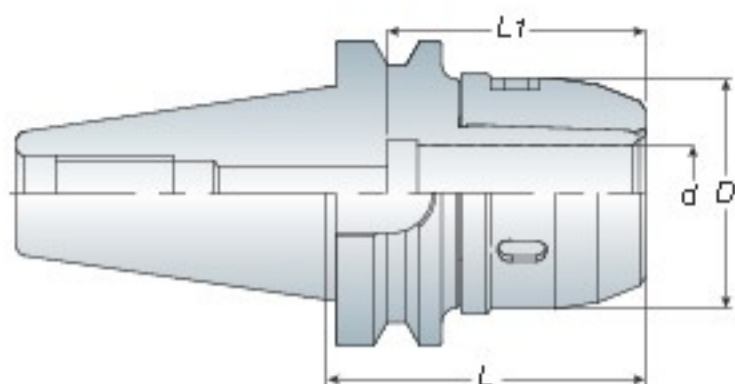
P6-SC Collet

**BT / NT**  
series

**ASC**

## High Speed Milling Chuck

高轉速強力銑刀夾頭刀桿



Model No.	Clamping Range	d	D	L	L1	Collet Type	Weight (kg)
BT30 ASC16 080	3~16	16	46	80	65	SC16	1.10
ASC20 085	4~20	20	53	85	72	SC20	1.30
BT40 ASC16 080	3~16	16	46	80	65	SC16	1.60
105	3~16	16	46	105	65	SC16	2.00
135	3~16	16	46	135	65	SC16	2.40
ASC20 080	4~20	20	53	80	72	SC20	1.80
105	4~20	20	53	105	72	SC20	2.30
135	4~20	20	53	135	72	SC20	2.90
BT50 ASC16 090	3~16	16	46	90	65	SC16	4.40
110	3~16	16	46	110	65	SC16	4.70
135	3~16	16	46	135	65	SC16	4.90
150	3~16	16	46	150	65	SC16	5.00
ASC20 090	4~20	20	53	90	72	SC20	4.50
110	4~20	20	53	110	72	SC20	5.00
135	4~20	20	53	135	72	SC20	5.60
150	4~20	20	53	150	72	SC20	6.00

Unit: mm



### Features

- ASC tooling system is suitable for high speed and high precision cutting.
- When using without collet, ASC tooling system is designed for coolant type - THROUGH TOOLS.
- Dust-proof design could extend tool holder lifetime.
- C-type wrench is attached for each ASC milling chuck.
- Balancing: 30,000 r.p.m G2.5
- ASC 刀具系列用於高轉速、高精密切削加工，切削效果佳
- 在沒有搭配筒夾的情況下使用，ASC 刀具系列為刀尖給油設計
- 特殊防塵設計，提升刀桿壽命
- 每支 ASC 刀桿均附 1 支 C 型扳手
- 動平衡：30,000 r.p.m G2.5





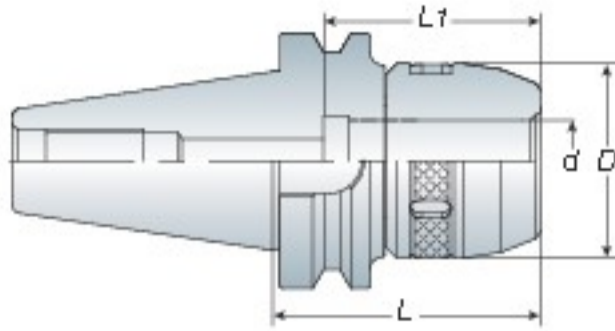
# Milling Chuck

強力銑刀夾頭刀桿

# ASC

# BT / NT

series



Model No.	Clamping Range	d	D	L	L1	Collet Type	Weight (kg)
BT30 ASC25-085	6~25	25	58	85	85	SC25	1.30
BT40 ASC25-090	6~25	25	58	90	85	SC25	1.90
-130	6~25	25	58	130	85	SC25	2.70
ASC32-095	6~32	32	68	95	95	SC32	2.20
-105	6~32	32	68	105	95	SC32	2.80
-130	6~32	32	68	130	95	SC32	3.30
BT50 ASC25-100	6~25	25	58	100	85	SC25	4.60
-150	6~25	25	58	150	85	SC25	5.50
ASC32-105	6~32	32	76	105	95	SC32	5.20
-150	6~32	32	76	150	95	SC32	6.40
-200	6~32	32	76	200	95	SC32	8.50
-250	6~32	32	76	250	95	SC32	9.70
ASC42-110	6~42	42	84	110	100	SC42	5.50
-160	6~42	42	84	160	100	SC42	7.60

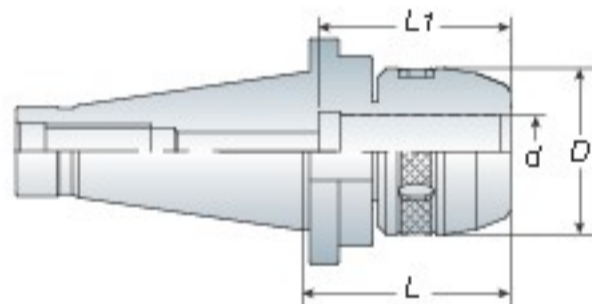
Unit: mm



**Without Collet -**  
Through tools  
刀尖出水

**With Collet -**  
Through collets  
筒夾出水

- C type wrench is attached for each ASC milling chuck.
- 每支 ASC 刀桿均附 1 支 C 型扳手



# Milling Chuck

強力銑刀夾頭刀桿



Model No.	Clamping Range	d	D	L	L1	Collet Type	Draw Bolt	Weight (kg)
NT30 ASC20-085	4~20	20	53	85	72	SC20		1.60
ASC25-080	6~25	25	58	80	85	SC25	1/2" 12 M12x1.75P	1.40
ASC32-090	6~32	32	68	90	95	SC32		1.80
NT40 ASC25-080	6~25	25	58	80	85	SC25		1.80
-130	6~25	25	58	130	85	SC25	5/8" 11 M16x2.0P	2.60
ASC32-085	6~32	32	68	85	95	SC32		2.20
-130	6~32	32	68	130	95	SC32		3.00
NT50 ASC25-085	6~25	25	58	85	85	SC25		3.90
-150	6~25	25	58	150	85	SC25		5.30
ASC32-090	6~32	32	76	90	95	SC32	1" 8 M24x3.0P	4.60
-150	6~32	32	76	150	95	SC32		5.60
ASC42-095	6~42	42	84	95	100	SC42		4.70
-150	6~42	42	84	150	100	SC42		6.80

Unit: mm

- When ordering, please specify the draw bolt with inch size or metric size.
- C type wrench is attached for each ASC milling chuck.
- 請於訂購時，確認刀桿為英制或公制
- 每支 ASC 刀桿均附 1 支 C 型扳手



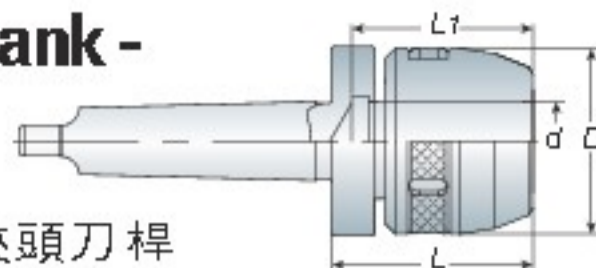
**P6- Wrench**

**P6- SC Collet**

**BT / NT**  
series

**ASC**

## Morse Taper Shank - Tang Type



莫氏錐度強力銑刀夾頭刀桿



- C type wrench is attached for each ASC milling chuck.
- 每支 ASC 刀桿均附 1 支 C 型扳手



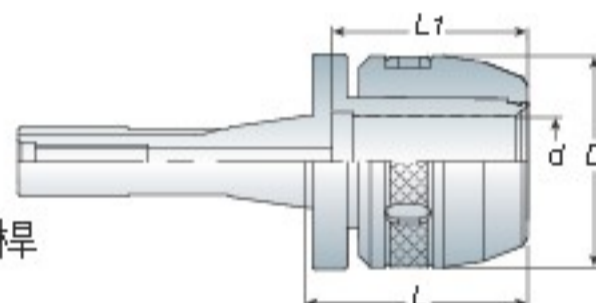
- C type wrench is attached for each ASC milling chuck.
- 每支 ASC 刀桿均附 1 支 C 型扳手



P6- Wrench

P6- SC Collet

## R8 Taper Shank



R8 強力銑刀夾頭刀桿

Model No.	Clamping Range	d	D	L	L1	Collet Type	Weight (kg)
R8ASC25-070	6~25	25	58	70	85	SC25	1.40
ASC32-075	6~32	32	68	75	95	SC32	1.70

Unit: mm

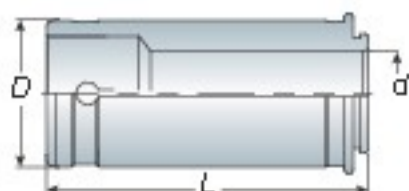
## Straight Collet Set

直束筒夾組



Model No.	Specification	Weight (kg)
SC12-6PCS	3,4,5,6,8,10	0.40
SC16-6PCS	3,4,6,8,10,12	1.80
SC20-6PCS	4,6,8,10,12,16	2.10
SC25-6PCS	6,8,10,12,16,20	2.40
SC32-7PCS (Metric)	6,8,10,12,16,20,25	3.80
SC32-7PCS (Inch)	1/4, 5/16, 3/8, 1/2, 5/8, 3/4, 1	3.80
SC42-8PCS	6,8,10,12,16,20,25,32	6.10

Unit: mm



## Straight Collet

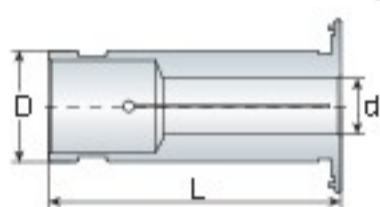
直束筒夾

Model No.	D	d	L	Weight (kg)
SC12	12	3,4,5,6,7,8,9,10	40	0.02
SC16	16	3,4,5,6,7,8,9,10,11,12	42	0.06
SC20	20	4,6,8,10,12,14,16	52	0.10
SC25	25	6,8,10,12,14,16,18,20	63	0.16
SC32 - Metric	32	6,8,10,12,14,16,18,20,25	71	0.30
SC32 - Inch	32	1/4,5/16,3/8,1/2,5/8,3/4,1	71	0.30
SC42	42	6,8,10,12,14,16,18,20,25,32	71	0.60

Unit: mm

## Straight Collet-Coolant Type

止水型直束筒夾



Model No.	D	d	L	Weight (kg)
SC12-CL	12	3,4,5,6,8	40	0.02
SC20-CL	20	4,6,8,10,12,14,16	52	0.10
SC32-CL	32	6,8,10,12,14,16,18,20,25	71	0.30

Unit: mm

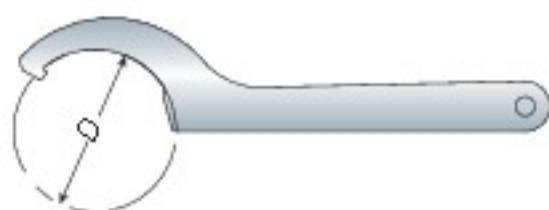


## Bearing Wrench

軸承扳手

Model No.	D	Suit for	Weight (kg)
WASG12	35	ASG12	0.70
WAMG12 / WASG16	46	AMG12 / ASG16	0.70
WAMG16 / WASG20	54	AMG16 / ASG20 (ASK25)	0.90
WAMG20 / WASG25	58	AMG20 / ASG25	1.10
WAMG25	62	AMG25	1.10
WASG32	68	ASG32	1.20
WAMG32	70	AMG32	1.20

Unit: mm



## C-type Wrench

C 型扳手

Model No.	D	Suit for	Weight (kg)
WASC16	46	ASC 16	0.22
WASC20	53	ASC 20	0.22
WASC25	55	ASC25 / OZ25	0.28
WASC32	68	BT30 / BT40 ASC32	0.35
WASC42	76	BT50 ASC32 / ASC42 / OZ32	0.40

Unit: mm

# SC

BT / NT  
series



# SC-CL



# ASC

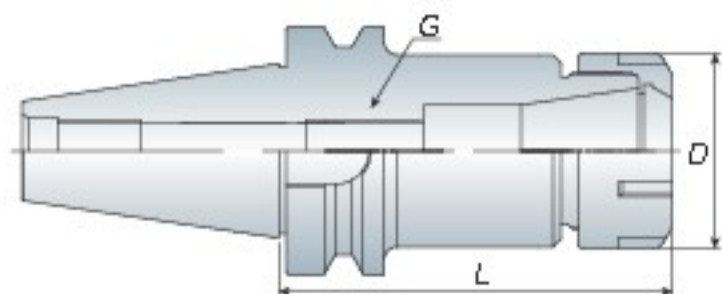


**BT / NT**  
series

**ER**

## Spring Collet Chuck

彈性筒夾本體



### Features

- ER collet chuck with the flexibility that can clamp drill, reamers, end mills and taps.
- ER16 / ER20 / ER25 / ER32 / ER40 are also suitable for ER power ball bearing nut, high speed bearing nut and wrench.
- Wrench must be ordered separately.
- ER 筒夾具有彈性，適合夾持鑽頭、鉸刀、銑刀及絲攻刀具
- ER16 / ER20 / ER25 / ER32 / ER40 刀桿可另外選配強力型鋼珠螺帽、高速鋼珠螺帽及扳手
- ER 扳手為另購品



P16- ER Nut

P12/13- ER Collet

P17- Wrench

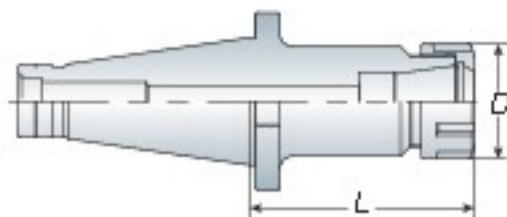


另可搭配強力型鋼珠螺帽



另可搭配高速鋼珠螺帽

Model No.	Clamping Range	D	L	G	Collet Type	Wrench	Weight (kg)
BT 30 ER08 060M	1~5	12	60	M6	ER08	WM08	0.50
100M	1~5	12	100	M6	ER08	WM08	0.60
ER11 100M	1~7	16	100	M8	ER11	WM11	0.60
ER16 100M	1~10	22	100	M12	ER16	WM16	0.70
ER20 100M	1~13	28	100	M14	ER20	WM20	0.80
BT 40 ER11 070M	1~7	16	70	M8	ER11	WM11	1.15
100M	1~7	16	100	M8	ER11	WM11	1.20
ER16 100M	1~10	22	100	M12	ER16	WM16	1.25
ER20 100M	1~13	28	100	M14	ER20	WM20	1.30
BT 30 ER11 060	1~7	19	60	M8	ER11	WER11	0.60
ER16 060	1~10	28	60	M12	ER16	WER16	0.60
070	1~10	28	70	M12	ER16	WER16	0.70
ER20 060	1~13	34	60	M14	ER20	WER20	0.60
ER25 060	2~16	42	60	M18	ER25	WER25	0.70
ER32 060	2~20	50	60	M24	ER32	WER32	0.75
070	2~20	50	70	M24	ER32	WER32	0.80
BT 40 ER11 070	1~7	19	70	M8	ER11	WER11	1.20
100	1~7	19	100	M8	ER11	WER11	1.25
ER16 070	1~10	28	70	M12	ER16	WER16	1.20
100/150	1~10	28	100/150	M12	ER16	WER16	1.40/1.60
ER20 080	1~13	34	80	M14	ER20	WER20	1.30
100/150	1~13	34	100/150	M14	ER20	WER20	1.50/1.80
ER25 080	2~16	42	80	M18	ER25	WER25	1.50
100/150	2~16	42	100/150	M18	ER25	WER25	1.70/2.10
ER32 060	2~20	50	60	M24	ER32	WER32	1.30
070	2~20	50	70	M24	ER32	WER32	1.40
100/150	2~20	50	100/150	M24	ER32	WER32	1.80/2.60
ER40 080	3~26	63	80	M28	ER40	WER40	1.70
100	3~26	63	100	M28	ER40	WER40	2.20
BT 50 ER16 100/150	1~10	28	100/150	M12	ER16	WER16	4.10/4.30
200/250/300	1~10	28	200/250/300	M12	ER16	WER16	4.60/5.10/5.40
ER20 100/150	1~13	34	100/150	M14	ER20	WER20	4.20/4.50
200/250/300	1~13	34	200/250/300	M14	ER20	WER20	4.90/5.50/5.90
ER25 100/150	2~16	42	100/150	M18	ER25	WER25	4.20/4.80
200/250/300	2~16	42	200/250/300	M18	ER25	WER25	5.30/6.10/6.80
ER32 100/150	2~20	50	100/150	M24	ER32	WER32	4.40/5.20
200/250/300	2~20	50	200/250/300	M24	ER32	WER32	5.90/6.60/7.50
ER40 080	3~26	63	80	M28	ER40	WER40	4.30
100/150	3~26	63	100/150	M28	ER40	WER40	4.70/5.90
200/250/300	3~26	63	200/250/300	M28	ER40	WER40	7.10/8.20/9.30



## Spring Collet Chuck

彈性筒夾本體

ER

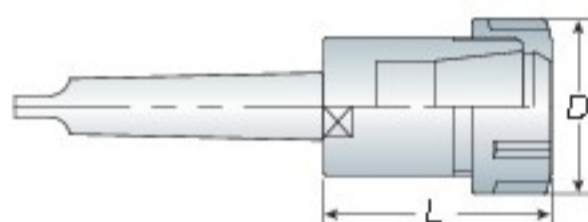
BT / NT  
series

Model No.	D	L	Collet Type	Draw Bolt	Weight (kg)
N T30 ER16-076	28	76	ER16	1/2" 12 M12x1.75P	0.70
ER32-055	50	55	ER32		0.80
ER40-085	63	85	ER40		1.40
N T40 ER16-076	28	76	ER16	5/8" 11 M16x2.0P	1.20
-100	28	100	ER16		1.30
ER20-076	34	76	ER20		1.40
-100	34	100	ER20		1.40
ER32-050	50	50	ER32		1.10
ER40-055	63	55	ER40		1.40
N T50 ER16-100	28	100	ER16	1" 8 M24x3.0P	3.30
-150	28	150	ER16		3.50
ER20-100	34	100	ER20		3.30
-150	34	150	ER20		3.70
ER32-058	50	58	ER32		3.20
ER40-058	63	58	ER40		3.20

Unit: mm



- When ordering, please specify the draw bolt for inch size or metric size.
- Wrench must be ordered separately
- 請於訂購時，確認刀桿為英制或公制
- ER 扳手為另購品



## Morse Taper Shank - Tang Type

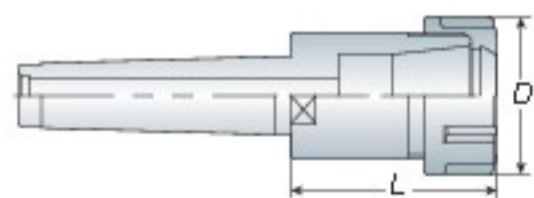
莫氏錐度彈性筒夾本體 -A 型

Model No.	D	L	Collet Type	Weight (kg)
MTA2 ER16-32	28	32	ER16	0.20
ER20-48	34	48	ER20	0.50
ER25-51	42	51	ER25	0.70
MTA3 ER16-40	28	40	ER16	0.40
ER32-53	50	53	ER32	0.80
ER40-78	63	78	ER40	1.30
MTA4 ER32-60	50	60	ER32	1.30
ER40-80	63	80	ER40	1.70
MTA5 ER40-80	63	80	ER40	2.90

Unit: mm



- Wrench must be ordered separately.
- ER 扳手為另購品



## Morse Taper Shank - Draw Bolt Type

莫氏錐度彈性筒夾本體 -B 型

Model No.	D	L	Collet Type	Draw Bolt	Weight (kg)
MTB2 ER16-040	28	40	ER16	3/8" 16 M10x1.5P	0.25
ER20-045	34	45	ER20		0.30
ER25-047	42	47	ER25		0.40
MTB3 ER16-040	28	40	ER16	1/2" 12 M12x1.75P	0.60
ER32-070	50	70	ER32		0.80
ER40-080	63	80	ER40		1.30
MTB4 ER32-060	50	60	ER32	5/8" 11 M16x2.0P	1.40
ER40-082	63	82	ER40		1.60
MTB5 ER40-082	63	82	ER40		1" 8 / M24x3.0P

Unit: mm



- Wrench must be ordered separately.
- ER 扳手為另購品



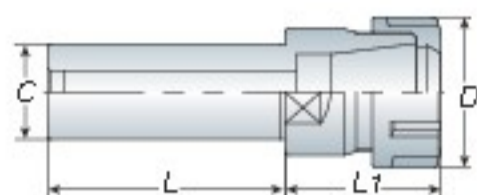
P16- ER Nut

P12/13- ER Co et

P17- Wrench

**BT / NT**  
series

**ER**



- Wrench must be ordered separately.
- ER 扳手為另購品



- Wrench must be ordered separately.
- ER 扳手為另購品



- Wrench must be ordered separately.
- ER 扳手為另購品



- Wrench must be ordered separately.
- ER 扳手為另購品



P-16- ER Nut   P-12/13- ER Collet   P-17- Wrench

## Straight Shank Collet Chuck

直柄彈性筒夾本體

Model No.	C	D	L	L1	Collet Type	Weight (kg)
C20 ER16-050	20	28	50	35	ER16	0.20
-100/150	20	28	100/150	35		0.35/0.45
ER20-050	20	34	50	40	ER20	0.25
-100/150	20	34	100/150	40		0.40/0.50
ER25-050	20	42	50	46	ER25	0.40
-100/150	20	42	100/150	46		0.50/0.70
C25 ER16-100/150	25	28	100/150	20	ER16	0.40/0.70
ER20-100/150	25	34	100/150	38	ER20	0.50/0.75
ER25-100/150	25	42	100/150	42	ER25	0.55/0.80
ER32-080	25	50	80	58	ER32	0.80
ER40-100	25	63	100	60	ER40	1.10
C32 ER25-060	32	42	60	46	ER25	0.70
ER32-100/150	32	50	100/150	58	ER32	1.10/1.40
ER40-100	32	63	100	60	ER40	1.30
C40 ER32-100	40	50	100	52	ER32	1.30
ER40-100	40	63	100	60	ER40	1.60

Unit: mm

## Straight Shank Collet Chuck - M Type

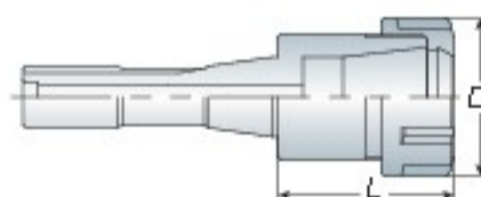
直柄彈性筒夾本體 - M 型

Model No.	C	D	L	L1	Collet Type	Weight (kg)
C16 ER11-050M	16	16	50	15	ER11	0.10
-100M	16	16	100	15		0.20
ER16-050M	16	22	50	32	ER16	0.15
-100M/150M	16	22	100/150	32		0.20/0.30
C20 ER16-050M	20	22	50	32	ER16	0.20
-100M/150M	20	22	100/150	32		0.30/0.40
ER20-050M	20	28	50	40	ER20	0.20
-100M/150M	20	28	100/150	40		0.35/0.50
C25 ER20-050M	25	28	50	40	ER20	0.30
-100M/150M	25	28	100/150	40		0.50/0.60

Unit: mm

## R8 Taper Shank

R8 彈性筒夾本體

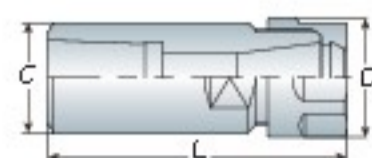


Model No.	D	L	Collet Type	G	Weight (kg)
R8 ER 16	28	35	ER 16	7/16"x20 UNF	0.60
ER 25	42	43	ER 25		0.70
ER 32	50	60	ER 32		0.90
ER 40	63	68	ER 40		1.40

Unit: mm

## Jacobs Female Taper Shank

內孔鑽頭彈性筒夾本體



Model No.	JT No.	C	D	L	Weight (kg)
JT2 ER16-070	JT2	25	28	70	0.20
JT6 ER16-070	JT6	25	28	70	0.20
ER20-070	JT6	34	34	70	0.30

Unit: mm

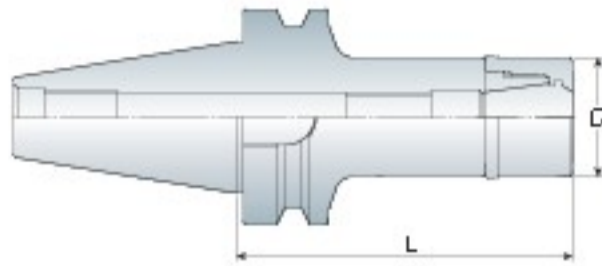
# Spring Collet Chuck

彈性筒夾本體

# MER

# BT / NT

series

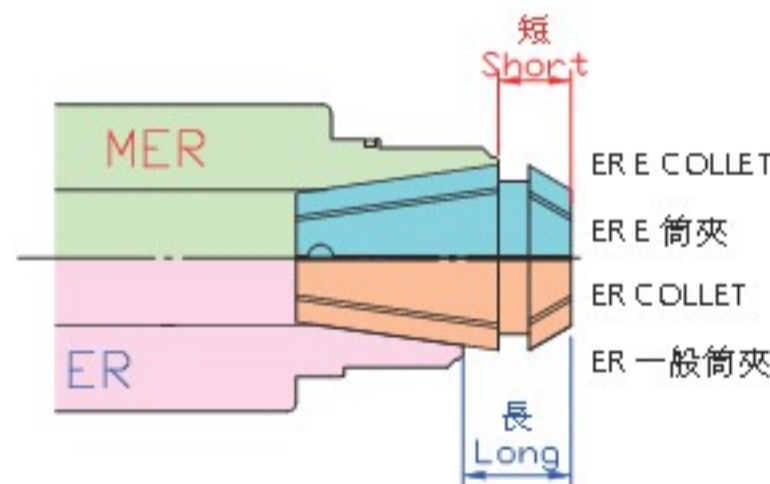


Model No.	Clamping Range	D	L	Wrench	Weight (kg)
BT30 MER16-060	1~10	30	60	WER16G	0.70
-070	1~10	30	70	WER16G	0.80
MER20-060	1~13	35	60	WER20G	0.70
MER25-060	2~16	40	60	WER25G	0.80
MER32-060	2~20	50	60	WER32G	0.85
-070	2~20	50	70	WER32G	0.90
BT40 MER16-070/100	1~10	30	70/100	WER16G	1.30/1.50
-120/150	1~10	30	120/150	WER16G	1.60/1.70
MER20-080/100	1~13	35	80/100	WER20G	1.40/1.50
-120/150	1~13	35	120/150	WER20G	1.70/1.90
MER25-080/100	2~16	40	80/100	WER25G	1.60/1.80
-120/150	2~16	40	120/150	WER25G	2.00/2.20
MER32-070/100	2~20	50	70/100	WER32G	1.50/1.90
-120	2~20	50	120	WER32G	2.10
BT50 MER16-100/150	1~10	30	100/150	WER16G	4.20/4.40
MER20-100/150	1~13	35	100/150	WER20G	4.30/4.60
MER25-100/150	2~16	40	100/150	WER25G	4.30/4.90
MER32-100/150	2~20	50	100/150	WER32G	4.50/5.30

Unit: mm

- MER 刀桿本體內孔模具線較深，使用 E 型筒夾置入時，更達到完全包覆性，增加加工穩定性。

- The design of deeper gauge line for MER holder. Recommend using ER-E type collet into the body (holder). The increasing length of contact area between collet and holder for improved clamping force.



>>> 比較 / Compare >>>



ER Holder + ER Collet



MER Holder + ER Collet



MER Holder + ER-E Type Collet



P16- ER Nut P13- ER E Type Collet P17- Wrench

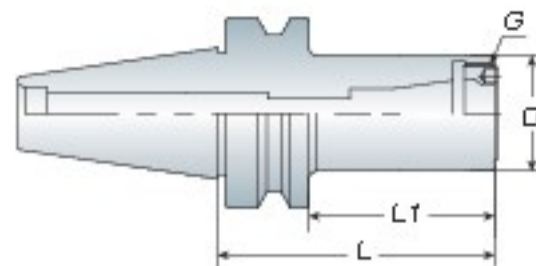
- MER has more contact area between holder and collet to make better radial cutting force than standard ER.
- Special design of MER High speed bearing nut, the clamping power is better than Standard ER type.
- MER system are suitable for high speed and high precision cutting.
- Suitable to use with ER-E type collet, the cutting condition will be excellent.
- Also could be used with standard ER collet, the clamping range change to 0.5mm from 1mm  
Ex. MER20 holder + ER20 06 collet => Clamping range: 6~5.5mm
- WER..G bearing wrench must be ordered separately.
- MER 系列比 ER 系列擁有更大的接觸面積及更少的突出長度，可提供更高的徑向切削力
- 獨特 MER 高速強力型細珠螺帽設計比一般 ER 系列具備更高的夾持力
- 適用於高轉速、高精密切削。
- 建議搭配 ER-E 型 立銼刀專用筒夾，切削效果極佳
- 亦可搭配一般 ER 筒夾使用，但夾持力範圍從 1mm 降為 0.5mm 為一單位  
Ex. MER20 刀桿 + ER20 06 筒夾 => 其夾持力範圍為 6~5.5mm
- WER..G 軸承扳手為另購品

**BT / NT**  
series

**ERA**

## High Speed Collet Chuck

高速彈性筒夾本體



Model No.	D	L1	L	G	Weight (kg)
BT30 ERA11-055	22	35	55	M18x1.0P	0.55
ERA16-065	28	45	65	M24x1.0P	0.65
ERA20-065	32	45	65	M28x1.5P	0.70
ERA25-060	38	40	60	M32x1.5P	0.70
BT40 ERA11-070	22	45	70	M18x1.0P	1.20
-100	22	75	100	M18x1.0P	1.20
ERA16-070	28	45	70	M24x1.0P	1.30
-100	28	75	100	M24x1.0P	1.30
ERA20-080	32	55	80	M28x1.5P	1.40
-100	32	75	100	M28x1.5P	1.50
ERA25-080	38	55	80	M32x1.5P	1.40
-100	38	75	100	M32x1.5P	1.50
ERA32-080	46	55	80	M40x1.5P	1.50
-100	46	75	100	M40x1.5P	1.80
BT50 ERA11-080	22	45	80	M18x1.0P	3.90
-110	22	75	110	M18x1.0P	4.00
ERA16-080	28	45	80	M24x1.0P	4.00
-110	28	75	110	M24x1.0P	4.10
ERA20-090	32	55	90	M28x1.5P	4.10
-110	32	75	110	M28x1.5P	4.20
ERA25-090	38	55	90	M32x1.5P	4.10
-110	38	75	110	M32x1.5P	4.30
ERA32-090	46	55	90	M40x1.5P	4.20
-110	46	75	110	M40x1.5P	4.50

Unit: mm



- The clamping nuts for ERA are special designed to be fitted internally into the holder. The special design could provide better cutting conditions and reducing cutting vibrations.
- Wrench must be ordered separately
- Balancing: 30,000 r.p.m G2.5
- 特殊內藏式螺帽設計：可降低及減少切削時所產生的阻力與振動，並提升加工品質及穩定性
- ERA 扳手為另購品
- 動平衡：30,000 r.p.m G2.5



**ERA**

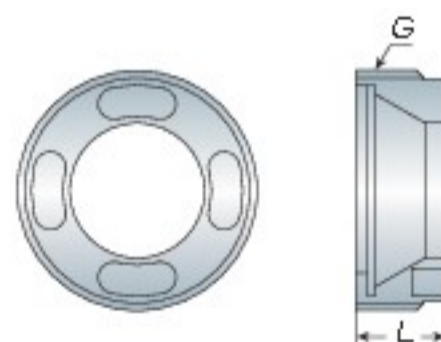
## Nut & Wrench

螺帽與扳手

Model No.	L	G	Collet Type	Weight (kg)
ERA11-NUT	6	M18x1.0P	ER11	0.01
ERA16-NUT	8	M24x1.0P	ER16	0.02
ERA20-NUT	11	M28x1.5P	ER20	0.02
ERA25-NUT	12.5	M32x1.5P	ER25	0.03
ERA32-NUT	14	M40x1.5P	ER32	0.06

Unit: mm

Model No.	Weight (kg)
WERA11	0.03
WERA16	0.07
WERA20	0.07
WERA25	0.13
WERA32	0.17





# Spring Collet

彈性筒夾

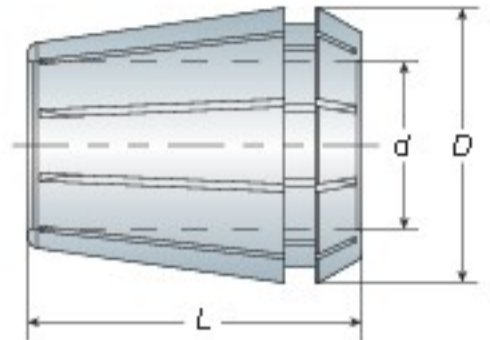
# ER

# BT / NT

series



- DIN6499 ISO15488 Collet must be assembled into the clamping nut before inserting into the chuck



## Metric Size

Model No.	D	L	d	Weight (kg)
ER08	8.5	13.5	1, 1.5, 2, 2.5, 3, 3.5, 4, 4.5, 5	0.01
ER11	11.5	18	1, 1.5, 2, 2.5, 3, 3.5, 4, 4.5, 5, 5.5, 6, 6.5, 7	0.01
ER16	17	27	1, 1.5, 2, 2.5, 3, 3.5, 4, 4.5, 5, 5.5, 6, 6.5, 7, 7.5, 8, 8.5, 9, 9.5, 10	0.03
ER20	21	31	1, 1.5, 2, 2.5, 3, 3.5, 4, 4.5, 5, 5.5, 6, 6.5, 7, 7.5, 8, 8.5, 9, 9.5, 10, 10.5, 11, 11.5, 12, 12.5, 13	0.04
ER25	26	35	2, 3, 4, 5, 6, 7, 8, 9, 10, 11, 12, 13, 14, 15, 16	0.07
ER32	33	40	2, 3, 4, 5, 6, 7, 8, 9, 10, 11, 12, 13, 14, 15, 16, 17, 18, 19, 20	0.15
ER40	41	46	3, 4, 5, 6, 7, 8, 9, 10, 11, 12, 13, 14, 15, 16, 17, 18, 19, 20, 21, 22, 23, 24, 25, 26	0.27
ER50	52	60	12, 14, 16, 18, 20, 22, 24, 26, 28, 30, 32, 34	0.45

Unit: mm

## Inch Size

Model No.	D	L	d	Weight (kg)
ER11	11.5	18	1/8, 5/32, 3/16, 7/32, 1/4	0.01
ER16	17	27	1/8, 5/32, 3/16, 7/32, 1/4, 9/32, 5/16, 11/32, 3/8	0.03
ER20	21	31	1/8, 5/32, 3/16, 7/32, 1/4, 9/32, 5/16, 11/32, 3/8, 13/32, 7/16, 1/2	0.04
ER25	26	35	1/8, 5/32, 3/16, 7/32, 1/4, 9/32, 5/16, 11/32, 3/8, 7/16, 15/32, 1/2, 9/16, 19/32, 5/8	0.07
ER32	33	40	1/8, 5/32, 3/16, 7/32, 1/4, 5/16, 11/32, 3/8, 7/16, 15/32, 1/2, 17/32, 9/16, 5/8, 21/32, 11/16, 3/4, 25/32	0.15
ER40	41	46	1/8, 5/32, 3/16, 1/4, 9/32, 5/16, 3/8, 7/16, 15/32, 1/2, 9/16, 5/8, 19/32, 11/16, 23/32, 3/4, 25/32, 13/16, 6.27/32, 7/8, 15/16, 6.31/32, 1	0.27

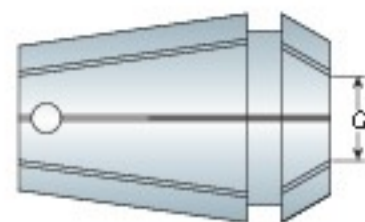
Unit: mm

ER08		ER11		ER16		ER20		ER25		ER32		ER40		ER50	
No.	Range	No.	Range	No.	Range	No.	Range	No.	Range	No.	Range	No.	Range	No.	Range
ER08-01	1.0	ER11-01	1.0	ER16-01	1.0-0.5	ER20-01	1.0-0.5	ER25-02	2.0-1.0	ER32-02	2.0-1.0	ER40-03	3.0-2.0	ER50-12	12-10
ER08-1.5	1.5	ER11-1.5	1.5	ER16-1.5	1.5-1.0	ER20-1.5	1.5-1.0	ER25-03	3.0-2.0	ER32-03	3.0-2.0	ER40-04	4.0-3.0	ER50-14	14-12
ER08-02	2.0-1.5	ER11-02	2.0-1.5	ER16-02	2.0-1.0	ER20-02	2.0-1.0	ER25-04	4.0-3.0	ER32-04	4.0-3.0	ER40-05	5.0-4.0	ER50-16	16-14
ER08-2.5	2.5-2.0	ER11-2.5	2.5-2.0	ER16-2.5	2.5-2.0	ER20-2.5	2.5-2.0	ER25-05	5.0-4.0	ER32-05	5.0-4.0	ER40-06	6.0-5.0	ER50-18	18-16
ER08-03	3.0-2.5	ER11-03	3.0-2.5	ER16-03	3.0-2.0	ER20-03	3.0-2.0	ER25-06	6.0-5.0	ER32-06	6.0-5.0	ER40-07	7.0-6.0	ER50-20	20-18
ER08-3.5	3.5-3.0	ER11-3.5	3.5-3.0	ER16-3.5	3.5-3.0	ER20-3.5	3.5-3.0	ER25-07	7.0-6.0	ER32-07	7.0-6.0	ER40-08	8.0-7.0	ER50-22	22-20
ER08-04	4.0-3.5	ER11-04	4.0-3.5	ER16-04	4.0-3.0	ER20-04	4.0-3.0	ER25-08	8.0-7.0	ER32-08	8.0-7.0	ER40-09	9.0-8.0	ER50-24	24-22
ER08-4.5	4.5-4.0	ER11-4.5	4.5-4.0	ER16-4.5	4.5-4.0	ER20-4.5	4.5-4.0	ER25-09	9.0-8.0	ER32-09	9.0-8.0	ER40-10	10-9.0	ER50-26	26-24
ER08-05	5.0-4.5	ER11-05	5.0-4.5	ER16-05	5.0-4.0	ER20-05	5.0-4.0	ER25-10	10-9.0	ER32-10	10-9.0	ER40-11	11-10	ER50-28	28-26
		ER11-5.5	5.5-5.0	ER16-5.5	5.5-5.0	ER20-5.5	5.5-5.0	ER25-11	11-10	ER32-11	11-10	ER40-12	12-11	ER50-30	30-28
		ER11-06	6.0-5.5	ER16-06	6.0-5.0	ER20-06	6.0-5.0	ER25-12	12-11	ER32-12	12-11	ER40-13	13-12	ER50-32	32-30
		ER11-6.5	6.5-6.0	ER16-6.5	6.5-6.0	ER20-6.5	6.5-6.0	ER25-13	13-12	ER32-13	13-12	ER40-14	14-13	ER50-34	34-32
		ER11-07	7.0-6.5	ER16-07	7.0-6.0	ER20-07	7.0-6.0	ER25-14	14-13	ER32-14	14-13	ER40-15	15-14		
				ER16-7.5	7.5-7.0	ER20-7.5	7.5-7.0	ER25-15	15-14	ER32-15	15-14	ER40-16	16-15		
				ER16-08	8.0-7.0	ER20-08	8.0-7.0	ER25-16	16-15	ER32-16	16-15	ER40-17	17-16		
				ER16-8.5	8.5-8.0	ER20-8.5	8.5-8.0			ER32-17	17-16	ER40-18	18-17		
				ER16-09	9.0-8.0	ER20-09	9.0-8.0			ER32-18	18-17	ER40-19	19-18		
				ER16-9.5	9.5-9.0	ER20-9.5	9.5-9.0			ER32-19	19-18	ER40-20	20-19		
				ER16-10	10-9.0	ER20-10	10-9.0			ER32-20	20-19	ER40-21	21-20		
						ER20-10.5	10.5-10					ER40-22	22-21		
						ER20-11	11-10					ER40-23	23-22		
						ER20-11.5	11.5-11					ER40-24	24-23		
						ER20-12	12-11					ER40-25	25-24		
						ER20-12.5	12.5-12					ER40-26	26-25		
						ER20-13	13-12								

- ER08 ~ ER20 建議夾持範圍皆為 0.5mm (Suggested clamping range should be 0.5mm)

## Collet for End Mill

立銑刀專用筒夾



### ER16E (approx. 0.03kgs/pc)

Model No.	d
ER16E-03	3
ER16E-04	4
ER16E-05	5
ER16E-06	6
ER16E-08	8
ER16E-10	10

Unit:mm

### ER20E (approx. 0.04kgs/pc)

Model No.	d
ER20E-03	3
ER20E-04	4
ER20E-05	5
ER20E-06	6
ER20E-08	8
ER20E-10	10
ER20E-12	12

Unit:mm

### ER25E (approx. 0.07kgs/pc)

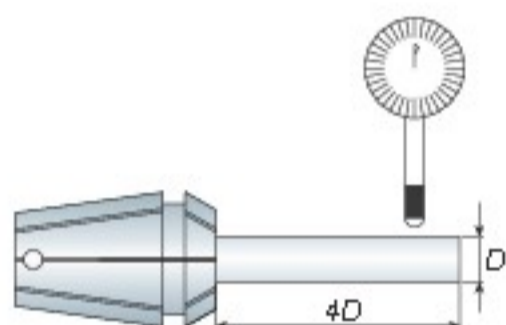
Model No.	d
ER25E-03	3
ER25E-04	4
ER25E-05	5
ER25E-06	6
ER25E-08	8
ER25E-10	10
ER25E-12	12
ER25E-14	14
ER25E-16	16

Unit:mm

### ER32E (approx. 0.15kgs/pc)

Model No.	d
ER32E-03	3
ER32E-04	4
ER32E-05	5
ER32E-06	6
ER32E-08	8
ER32E-10	10
ER32E-12	12
ER32E-14	14
ER32E-16	16
ER32E-18	18
ER32E-20	20

Unit:mm



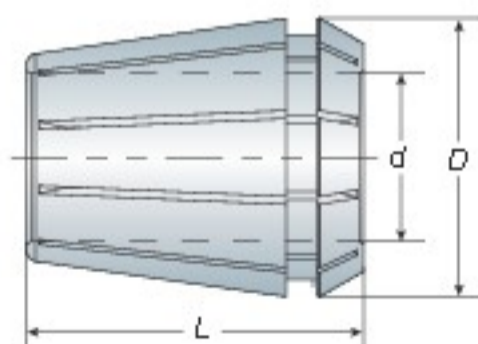
筒夾等級 Collet Grade	跳動精度 / Runout - Max $\mu$ 4 倍直徑前 - 4xD
A 級	$\leq 10\mu$
AA 級	$\leq 5\mu$

- When ordering, please specify the collet grade with A or AA.
- 請於訂購時註明 A 級或 AA 級
- For example / 例 : ER16E 06 A or ER16E 06AA



## Spring Collet - Coolant Type

止水型筒夾



Model No.	D	L	d	Weight (kg)
ER16-CL	17	27	4,5,6,7,8,9,10	0.03
ER20-CL	21	31	4,5,6,7,8,9,10,11,12,13	0.04
ER25-CL	26	35	4,5,6,7,8,9,10,11,12,13,14,15,16	0.07
ER32-CL	33	40	4,5,6,7,8,9,10,11,12,13,14,15,16,17,18,19,20	0.15
ER40-CL	41	46	4,5,6,7,8,9,10,11,12,13,14,15,16,17,18,19,20,21,22,23,24,25,26	0.27

Unit: mm



- Maximum water pressure: 21kgf/cm<sup>2</sup>
- 最大水壓可達 21kgf/cm<sup>2</sup>

# Tap Collet

## 攻牙筒夾

# ER-GB

# BT / NT

series



- Please check shank diameter (∅d) and square size (SQ/□) when ordering.
- 請於訂購時確認攻牙筒夾的柄徑 (∅d) 和四角孔 (SQ/□)

∅d (mm)	□ (mm)	ER16GB (approx. 0.03kgs/pc)				ER20GB (approx. 0.04kgs/pc)				ER25GB (approx. 0.07kgs/pc)			
		JIS	ISO	DIN371	DIN376	JIS	ISO	DIN371	DIN376	JIS	ISO	DIN371	DIN376
4	3			M3.5			M3.5						
4	3.2	M3				M3							
4.5	3.4			M4	M6			M4	M6			M4	M6
5	4	M4	M5			M4	M5			M4	M5		
5.5	4.5	M5				M5				M5			
6	4.5	M6, W1/4				M6, W1/4				M6, W1/4			
6	4.9			M5, M6	M8			M5, M6	M8			M5, M6	M8
6.1	5	W5/16				W5/16				W5/16			
6.2	5	M8				M8				M8			
7	5.5	M10, W3/8		M7	M10	M10, W3/8		M7	M10	M10, W3/8		M7	M10
8	6.2			M8	M11			M8	M11			M8	M11
8.5	6.5					M12				M12			
9	7.1						M12				M12		
10	8						M10	M10			M10	M10	
10.5	8									M14			
11	9												M14
12	9									W5/8			M16
12.5	10									M16	M16		

∅d (mm)	□ (mm)	ER32GB (approx. 0.15kgs/pc)				ER40GB (approx. 0.27kgs/pc)			
		JIS	ISO	DIN371	DIN376	JIS	ISO	DIN371	DIN376
4.5	3.4			M4	M6				
5	4	M4	M5						
5.5	4.5	M5							
6	4.5	M6, W1/4				M6, W1/4			
6	4.9			M5, M6				M5, M6	
6.1	5	W5/16				W5/16			
6.2	5	M8				M8			
7	5.5	M10, W3/8		M7	M10	M10, W3/8		M7	M10
8	6.2			M8	M11			M8	M11
8.5	6.5	M12				M12			
9	7.1		M12				M12		
10	8		M10	M10			M10	M10	
10.5	8	M14				M14			
11	9				M14				M14
12	9	W5/8			M16	W5/8			M16
12.5	10	M16	M16			M16	M16		
14	11	M18, W3/4, PT3/8			M18	M18, W3/4, PT3/8			M18
15	12	M20				M20			
16	12				M20				M20
17	13	M22, W7/8				M22, W7/8			
18	14.5								M22, M24
19	15					M24			
20	15					M27, W1, PT5/8			
20	16						M27, M30		M27
22	18								M30

**ER11**

Model No.	Specification	PCS/SET	Weight (kg)
ER11 07PCS	1,2,3,4,5,6,7	7PCS/SET	0.30
ER11 13PCS	1,1.5,2,2.5,3,3.5,4,4.5,5,5.5,6,6.5,7	13PCS/SET	0.40

Unit: mm

**ER16**

Model No.	Specification	PCS/SET	Weight (kg)
ER16 08PCS	3,4,5,6,7,8,9,10	8PCS/SET	0.50
ER16 10PCS	1,2,3,4,5,6,7,8,9,10	10PCS/SET	0.70
ER16 CL 07PCS	4,5,6,7,8,9,10	7PCS/SET	0.50

Unit: mm

**ER20**

Model No.	Specification	PCS/SET	Weight (kg)
ER20 10PCS	4,5,6,7,8,9,10,11,12,13	10PCS/SET	0.70
ER20 12PCS	2,3,4,5,6,7,8,9,10,11,12,13	12PCS/SET	0.80
ER20 CL 10PCS	4,5,6,7,8,9,10,11,12,13	10PCS/SET	0.70

Unit: mm

**ER25**

Model No.	Specification	PCS/SET	Weight (kg)
ER25 07PCS	4,6,8,10,12,14,16	7PCS/SET	1.20
ER25 15PCS	2,3,4,5,6,7,8,9,10,11,12,13,14,15,16	15PCS/SET	1.70
ER25 CL 13PCS	4,5,6,7,8,9,10,11,12,13,14,15,16	13PCS/SET	1.50

Unit: mm

**ER32**

Model No.	Specification	PCS/SET	Weight (kg)
ER32 06PCS	6,8,10,12,16,20	6PCS/SET	1.60
ER32 11PCS	4,5,6,8,10,12,13,15,16,18,20	11PCS/SET	2.20
ER32 18PCS	3,4,5,6,7,8,9,10,11,12,13,14,15,16,17,18,19,20	18PCS/SET	3.10
ER32 CL 17PCS	4,5,6,7,8,9,10,11,12,13,14,15,16,17,18,19,20	17PCS/SET	3.00

Unit: mm

**ER40**

Model No.	Specification	PCS/SET	Weight (kg)
ER40 07PCS	6,8,10,12,16,20,25	7PCS/SET	2.50
ER40 15PCS	4,5,6,8,10,12,13,15,16,18,20,21,22,25,26	15PCS/SET	4.30
ER40 23PCS	4,5,6,7,8,9,10,11,12,13,14,15,16,17,18,19,20,21,22,23,24,25,26	23PCS/SET	6.20
ER40 CL 23PCS	4,5,6,7,8,9,10,11,12,13,14,15,16,17,18,19,20,21,22,23,24,25,26	23PCS/SET	6.20

Unit: mm



# Clamping Nut

螺帽

ER

BT / NT  
series

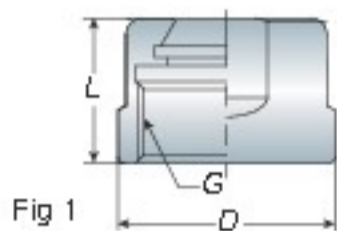


Fig 1

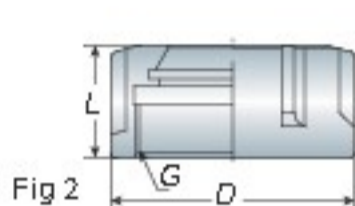


Fig 2

Standard Nut 普通螺帽	Model No.	FIG.	D	L	Nm	G	Collet Type	Weight (kg)
	CN11	1	19	13	30	M14x0.75P	ER11	0.01
	CN16	1	28	18.5	70	M22x1.5P	ER16	0.04
	CN20	1	34	21	100	M25x1.5P	ER20	0.07
	CN25	2	42	21.5	130	M32x1.5P	ER25	0.11
	CN32	2	50	24	170	M40x1.5P	ER32	0.15
	CN40	2	63	26	220	M50x1.5P	ER40	0.30
CN50	2	78	35		M64x2.0P	ER50	0.50	

Unit: mm

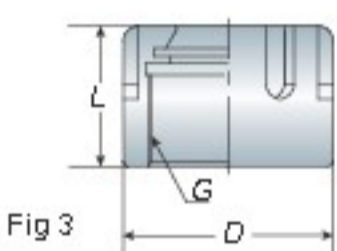


Fig 3

M Type Nut M 型螺帽	Model No.	FIG.	D	L	Nm	G	Collet Type	Weight (kg)
	CNM08	3	12	10.8	10	M10x0.75P	ER08	0.01
	CNM11	3	16	12	30	M13x0.75P	ER11	0.01
	CNM16	3	22	17	70	M19x1.0P	ER16	0.02
	CNM20	3	28	19.2	100	M24x1.0P	ER20	0.03

Unit: mm

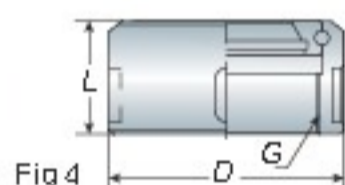


Fig 4

Power Ball Bearing Nut 強力型鋼珠螺帽	Model No.	FIG.	D	L	Nm	G	Collet Type	Weight (kg)
	CN16-B	4	32	19	70	M22x1.5P	ER16	0.07
	CN20-B	4	35	21	100	M25x1.5P	ER20	0.09
	CN25-B	4	43	22	130	M32x1.5P	ER25	0.13
	CN32-B	4	51	24	170	M40x1.5P	ER32	0.16
	CN40-B	4	63	29	220	M50x1.5P	ER40	0.31

Unit: mm

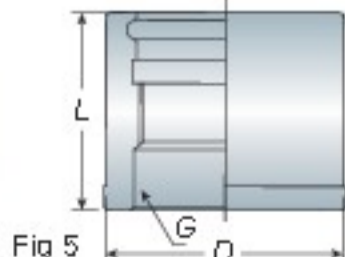


Fig 5

High Speed Bearing Nut 高速鋼珠螺帽	Model No.	FIG.	D	L	Nm	G	Collet Type	Weight (kg)
	CN-GER16	5	30	19	70	M22x1.5P	ER16	0.08
	CN-GER20	5	35	21	100	M25x1.5P	ER20	0.10
	CN-GER25	5	40	22	130	M32x1.5P	ER25	0.13
	CN-GER32	5	50	25	170	M40x1.5P	ER32	0.15

Unit: mm

Standard Wrench 普通扳手	Model No.	FIG.	A	d	L	Suit For	Weight (kg)
	WER11	1	29	17	140	CN11	0.08
	WER16	1	45	25	142	CN16	0.12
	WER20	1	54	30	162	CN20	0.17
	WER25	2	65	37	206	CN25	0.22
	WER32	2	75	46.5	253	CN32	0.30
	WER40	2	90	58	289	CN40	0.36
WER50	2	110	-	350	CN50	0.70	

M Type Wrench M型扳手	Model No.	FIG.	A	d	L	Suit For	Weight (kg)
	WM08	3	13	-	75	CNM08	0.02
	WM11	3	17	8.5	95	CNM11	0.03
	WM16	3	22.5	12.5	117	CNM16	0.05
WM20	3	28.5	15.5	127	CNM20	0.07	

C Type Wrench (for power ball bearing nut) C型扳手 (強力型鋼珠螺帽用)	Model No.	FIG.	d	L	Suit For	Weight (kg)
	WER16B	4	32	205	CN16-B	0.16
	WER20B	4	36	220	CN20-B	0.18
	WER25B	4	43	235	CN25-B	0.21
	WER32B	4	51	255	CN32-B	0.22
WER40B	4	63	260	CN40-B	0.25	

Bearing Wrench (for high speed bearing nut) 軸承扳手 (高速鋼珠螺帽用)	Model No.	FIG.	d	L	Suit For	Weight (kg)
	WER16G	5	30	-	CN16-G	0.60
	WER20G	5	35	-	CN20-G	0.65
	WER25G	5	40	-	CN25-G	0.80
WER32G	5	50	-	CN32-G	0.83	

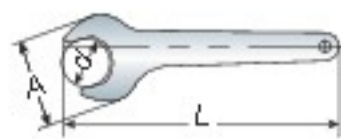


Fig 1



Fig 2



Fig 3

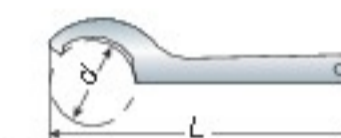


Fig 4



Fig 5

Unit: mm

## Torque Control Type

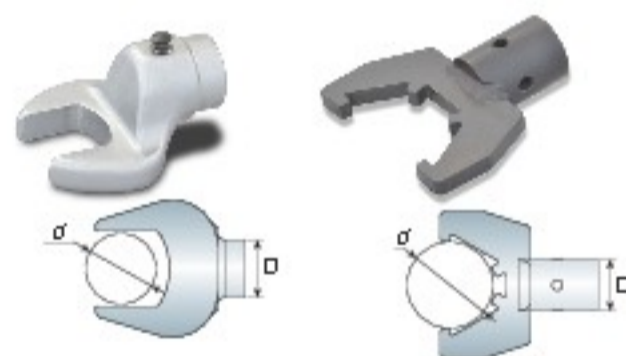
扭力型

Model No.	Type	d	D	Suit For	Weight(kg)
ER16TC	ER16	56	16	CN16	0.20
ER20TC	ER20	68	16	CN20	0.30
ER25TC	ER25	64	16	CN25	0.14
ER32TC	ER32	74	16	CN32	0.15
ER40TC	ER40	90	16	CN40	0.20

Unit: mm

### Wrench Spigot

扭力扳手轉接頭



## Spigot Interchangeable Digital Torque Wrench

數位顯示扭力扳手

Model No.	d	L	Nm	lbf-ft	lbf-in	Weight (kg)
WDG-252	16	373	10-135	7.4-99.6	89-1195	0.80
WDG-253	16	548	20-200	14.8-147	178-1780	1.05
WDG-254	16	748	34-340	25-250.9	301-3010	1.35

Unit: mm



## Torque Wrench

扭力扳手

Model No.	d	L	Nm	lbf-ft	lbf-in	Weight (kg)
OP-1710AKB	16	405	20-100	14.8-74	178-890	1.15
OP-1718AK	16	500	40-200	29.6-148	356-1780	1.38
OP-1720AK	16	575	60-320	44.4-236.8	534-2848	1.50

Unit: mm



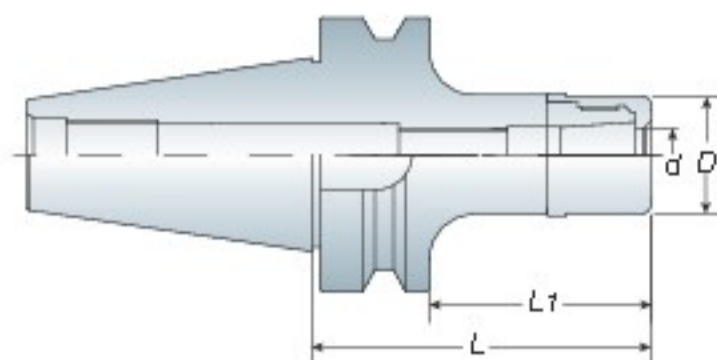
# High Speed Collet Chuck

高轉速精密筒夾本體

# ASK

# BT / NT

series



**Through tools must use integer collet and coolant nut together. (refer P.25)**

需搭配使用整數筒夾及止水螺帽才有刀尖出水效果 (請參考 P.25)

## Features

- ASK tooling systems are suitable for high speed and high precision cutting.
- Special nut design provides better cutting condition and reducing cutting vibration.
- ASK collet can be achieve the best cutting condition when using AA grade.
- Wrench must be ordered separately.
- Balancing: 30,000 r.p.m G2.5
- ASK 系列適用於高轉速、高精密切削加工，切削效果佳
- 螺帽獨特設計可降低高轉速切削時的風阻及噪音並提升工作效能
- 欲達到切削效果佳，可搭配使用 AA 級筒夾
- ASK 扳手為另購品
- 動平衡：30,000 r.p.m G2.5

Model No.	Clamping Range (d)	D	L1	L	Weight (kg)
BT30ASK06-060	2~6	19.05	40	60	0.60
-090	2~6	19.05	70	90	0.60
ASK10-070	2~10	27	50	70	0.70
-090	2~10	27	70	90	0.80
ASK13-060	3~13	33	40	60	1.00
-075	3~13	33	55	75	1.10
-090	3~13	33	70	90	1.10
ASK16-060	3~16	40	40	60	0.70
-090	3~16	40	70	90	0.90
-120	3~16	40	100	120	1.10
ASK20-060	4~20	48	40	60	0.80
ASK25-085	6~25.4	54	65	85	1.20
BT40ASK06-060	2~6	19.05	35	60	1.10
-090	2~6	19.05	65	90	1.30
-120	2~6	19.05	95	120	1.50
ASK10-060	2~10	27	35	60	1.20
-080	2~10	27	55	80	1.30
-090	2~10	27	65	90	1.35
-100	2~10	27	75	100	1.40
-120	2~10	27	95	120	1.50
-150	2~10	27	125	150	1.60
ASK13-060	3~13	33	35	60	1.20
-080	3~13	33	55	80	1.30
-090	3~13	33	65	90	1.40
-100	3~13	33	75	100	1.50
-120	3~13	33	95	120	1.60
-150	3~13	33	125	150	1.80
ASK16-060	3~16	40	25	60	1.30
-080	3~16	40	45	80	1.50
-090	3~16	40	55	90	1.55
-100	3~16	40	65	100	1.60
-120	3~16	40	85	120	1.90
-150	3~16	40	115	150	2.10
ASK20-060	4~20	48	25	60	1.30
-090	4~20	48	55	90	1.80
-120	4~20	48	85	120	2.40
ASK25-070	6~25.4	54	35	70	1.50
-090	6~25.4	54	55	90	1.90
-120	6~25.4	54	85	120	2.20

Unit: mm



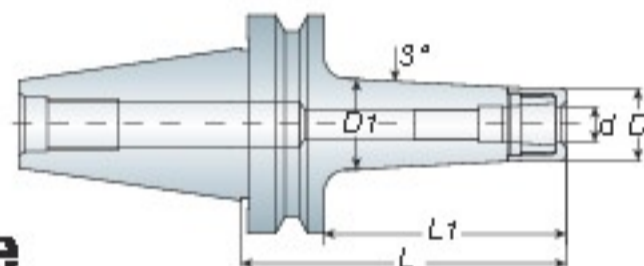
P20/21- SK Collet

P24- Wrench

P25- ASK Nut

Model No.	Clamping Range (d)	D	L1	L	Weight (kg)
BT50 ASK06-100	2~6	19.05	65	100	3.90
ASK10-100	2~10	27	65	100	4.00
-130	2~10	27	95	130	4.10
-150	2~10	27	115	150	4.20
ASK13-100	3~13	33	65	100	4.50
-130	3~13	33	95	130	4.70
-150	3~13	33	115	150	4.90
ASK16-100	3~16	40	65	100	4.20
-130	3~16	40	95	130	4.50
-150	3~16	40	115	150	5.00
ASK20-105	4~20	48	70	105	4.60
-135	4~20	48	100	135	5.00
-165	4~20	48	130	165	5.60
ASK25-100	6~25.4	54	65	100	4.50
-130	6~25.4	54	95	130	5.00
-150	6~25.4	54	115	150	5.30

Unit: mm



## High Speed Collet Chuck - Rigidity Type

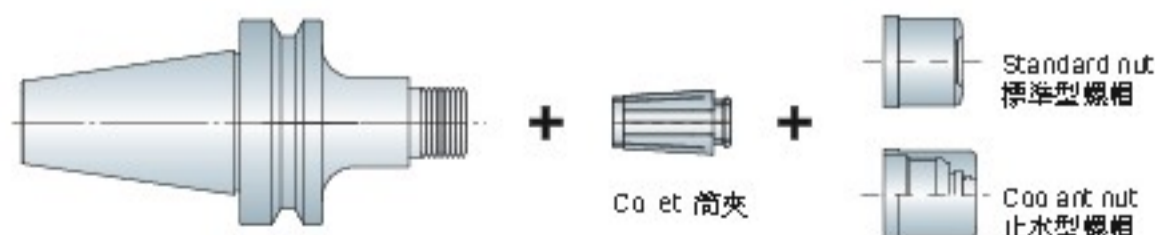
高轉速精密筒夾本體 -  
高剛性型

Model No.	Clamping Range (d)	D	D1	L1	L	Weight (kg)
BT40 ASK06-150T	2~6	19.05	29	125	150	1.50
ASK10-150T	2~10	27	36	125	150	1.60
ASK13-150T	3~13	33	43	125	150	1.80
ASK16-150T	3~16	40	49	125	150	1.90
BT50 ASK06-150T	2~6	19.05	28	115	150	4.00
ASK10-150T	2~10	27	35	115	150	4.60
-200T	2~10	27	40	165	150	4.80
ASK13-150T	3~13	33	42	115	150	4.90
-200T	3~13	33	47	165	200	5.20
ASK16-150T	3~16	40	47	115	150	5.10
-200T	3~16	40	53	165	200	5.50

Unit: mm



- ASK T tooling system is designed by taper type and suitable for high speed, high precision and reducing cutting vibration.
- Wrench must be ordered separately.
- Balancing: 30,000 r.p.m G2.5
- ASK T 系列為錐度柄之設計，適用於高轉速、高精密切削加工，切削剛性效果佳
- ASK 扳手為另購品
- 動平衡：30,000 r.p.m G2.5



Tool Holder 刀桿

- Coolant Nut: refer to P.25
- 出水螺帽請參考 P.25





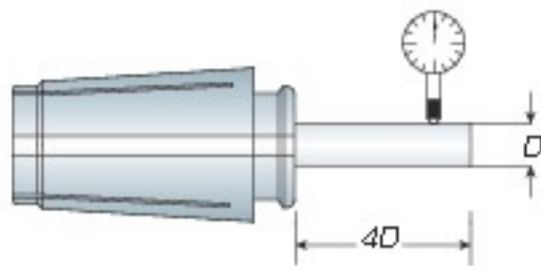
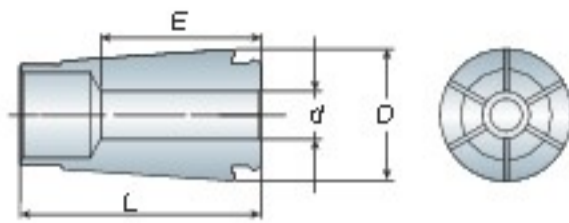
# High Speed Collet

精密筒夾

# SK

# BT / NT

series



筒夾等級 Collet Grade	跳動精度 / Runout - Max $\mu$ 4 倍直徑前 - 4xD
A 級	$\leq 10\mu$
AA 級	$\leq 5\mu$

## SK06 (approx. 0.005kgs/pc)

Model No.	d	E	Range	D	L
SK06-02	2	12	2-1.75	10.4	25
SK06-2.25	2.25	12	2.25-2		
SK06-2.5	2.5	12	2.5-2.25		
SK06-2.75	2.75	12	2.75-2.5		
SK06-03	3	15	3-2.75		
SK06-3.175	3.175	15	3.175-2.5		
SK06-3.5	3.5	15	3.5-3		
SK06-04	4	16	4-3.5		
SK06-4.5	4.5	16	4.5-4		
SK06-05	5	21	5-4.5		
SK06-5.5	5.5	21	5.5-5		
SK06-06	6	25	6-5.5		

Unit: mm

## SK10 (approx. 0.02kgs/pc)

Model No.	d	E	Range	D	L
SK10-02	2	15	2-1.75	15.6	31
SK10-2.25	2.25	15	2.25-2		
SK10-2.5	2.5	15	2.5-2.25		
SK10-2.75	2.75	15	2.75-2.5		
SK10-03	3	15	3-2.75		
SK10-3.175	3.175	15	3.175-2.7		
SK10-3.5	3.5	15	3.5-3		
SK10-04	4	20	4-3.5		
SK10-4.5	4.5	20	4.5-4		
SK10-05	5	20	5-4.5		
SK10-5.5	5.5	20	5.5-5		
SK10-06	6	24	6-5.5		
SK10-6.5	6.5	24	6.5-6		
SK10-07	7	24	7-6.5		
SK10-7.5	7.5	24	7.5-7		
SK10-08	8	24	8-7.5		
SK10-8.5	8.5	24	8.5-8		
SK10-09	9	24	9-8.5		
SK10-9.5	9.5	24	9.5-9		
SK10-10	10	30.5	10-9.5		

Unit: mm

## SK13 (approx. 0.04kgs/pc)

Model No.	d	E	Range	D	L
SK13-03	3	18	3-2.75	10.4	25
SK13-3.175	3.175	18	3.175-2.7		
SK13-3.5	3.5	18	3.5-3		
SK13-04	4	20	4-3.5		
SK13-4.5	4.5	20	4.5-4		
SK13-05	5	20	5-4.5		
SK13-5.5	5.5	20	5.5-5		
SK13-06	6	24	6-5.5		
SK13-6.5	6.5	24	6.5-6		
SK13-07	7	26	7-6.5		
SK13-7.5	7.5	26	7.5-7		
SK13-08	8	28	8-7.5		
SK13-8.5	8.5	28	8.5-8		
SK13-09	9	30	9-8.5		
SK13-9.5	9.5	30	9.5-9		
SK13-10	10	30	10-9.5		
SK13-10.5	10.5	30	10.5-10		
SK13-11	11	30	11-10.5		
SK13-11.5	11.5	30	11.5-11		
SK13-12	12	39	12-11.5		
SK13-12.5	12.5	39	12.5-12		
SK13-13	13	39	13-12.5		

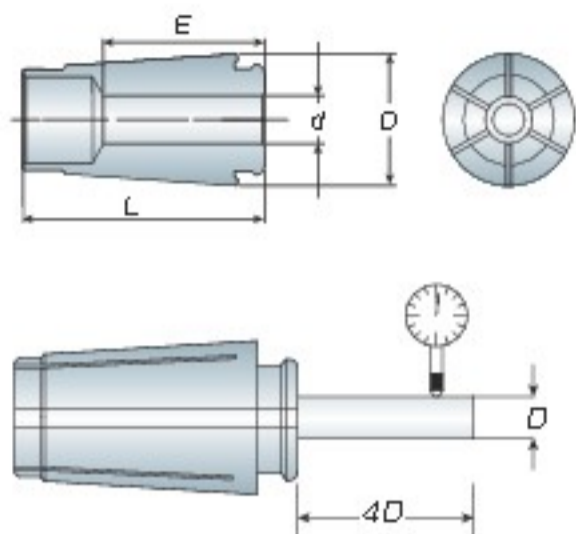
Unit: mm

## SK16 (approx. 0.08kgs/pc)

Model No.	d	E	Range	D	L
SK16-03	3	18	3-2.75	24.6	45
SK16-3.175	3.175	18	3.175-2.7		
SK16-3.5	3.5	18	3.5-3		
SK16-04	4	20	4-3.5		
SK16-4.5	4.5	20	4.5-4		
SK16-05	5	22	5-4.5		
SK16-5.5	5.5	22	5.5-5		
SK16-06	6	25	6-5.5		
SK16-6.5	6.5	25	6.5-6		
SK16-07	7	28	7-6.5		
SK16-7.5	7.5	28	7.5-7		
SK16-08	8	34	8-7.5		
SK16-8.5	8.5	34	8.5-8		
SK16-09	9	34	9-8.5		
SK16-9.5	9.5	34	9.5-9		
SK16-10	10	34	10-9.5		
SK16-10.5	10.5	34	10.5-10		
SK16-11	11	34	11-10.5		
SK16-11.5	11.5	34	11.5-11		
SK16-12	12	34	12-11.5		
SK16-12.5	12.5	34	12.5-12		
SK16-13	13	34	13-12.5		
SK16-13.5	13.5	34	13.5-13		
SK16-14	14	34	14-13.5		
SK16-14.5	14.5	34	14.5-14		
SK16-15	15	34	15-14.5		
SK16-15.5	15.5	34	15.5-15		
SK16-16	16	45	16-15.5		

Unit: mm

- When ordering, please specify the collet grade with A or AA.  
For example:  
SK10 06 AA or SK10E 04 AA  
SK10 8PCS AA or SK10E 6PCS AA
- The clamping range is 0.25mm if the inside diameter is less than 3mm;  
clamping range is 0.5mm if the inside diameter is over than 3mm.
- 請於訂購時註明 A 級或 AA 級  
例：SK10 06 AA or SK10E 04 AA  
SK10 8PCS AA or SK10E 6PCS AA
- 筒夾的孔徑小於 3mm，其夾持範圍為 0.25mm；若大於 3mm 則為 0.5mm



筒夾等級 Collet Grade	跳動精度 / Runout - Max $\mu$ 4 倍直徑前 - 4xD
A 級	$\leq 10\mu$
AA 級	$\leq 5\mu$

- When ordering, please specify the collet grade with A or AA.  
For example:  
SK10 06 AA or SK10E 04 AA  
SK10 8PCS AA or SK10E 6PCS AA
- The clamping range is 0.25mm if the inside diameter is less than 3mm;  
clamping range is 0.5mm if the inside diameter is over than 3mm.
- 請於訂購時註明 A 級或 AA 級  
例：SK10 06 AA or SK10E 04 AA  
SK10 8PCS AA or SK10E 6PCS AA
- 筒夾的孔徑小於 3mm，其夾持範圍為 0.25mm；若大於 3mm 則為 0.5mm

### SK20 (approx. 0.14kgs/pc)

Model No.	d	E	Range	D	L
SK20-04	4	18	3.5-4		
SK20-4.5	4.5	18	4-4.5		
SK20-05	5	18	4.5-5		
SK20-5.5	5.5	18	5-5.5		
SK20-06	6	24	5.5-6		
SK20-6.5	6.5	24	6-6.5		
SK20-07	7	24	6.5-7		
SK20-7.5	7.5	24	7-7.5		
SK20-08	8	32	7.5-8		
SK20-8.5	8.5	32	8-8.5		
SK20-09	9	32	8.5-9		
SK20-9.5	9.5	32	9-9.5		
SK20-10	10	38	9.5-10		
SK20-10.5	10.5	38	10-10.5		
SK20-11	11	38	10.5-11		
SK20-11.5	11.5	38	11-11.5		
SK20-12	12	38	11.5-12	19.1	54.3
SK20-12.5	12.5	38	12-12.5		
SK20-13	13	38	12.5-13		
SK20-13.5	13.5	38	13-13.5		
SK20-14	14	38	13.5-14		
SK20-14.5	14.5	38	14-14.5		
SK20-15	15	38	14.5-15		
SK20-15.5	15.5	38	15-15.5		
SK20-16	16	39	15.5-16		
SK20-16.5	16.5	39	16-16.5		
SK20-17	17	39	16.5-17		
SK20-17.5	17.5	39	17-17.5		
SK20-18	18	39	17.5-18		
SK20-18.5	18.5	45	18-18.5		
SK20-19	19	45	18.5-19		
SK20-19.5	19.5	45	19-19.5		
SK20-20	20	50	19.5-20		

Unit: mm

### SK25 (approx. 0.24kgs/pc)

Model No.	d	E	Range	D	L
SK25-06	6	24	5.5-6		
SK25-08	8	32	7.5-8		
SK25-10	10	40	9.5-10		
SK25-12	12	42	11.5-12		
SK25-14	14	42	13.5-14		
SK25-16	16	44	15.5-16		
SK25-16.5	16.5	44	16-16.5		
SK25-17	17	44	16.5-17		
SK25-17.5	17.5	44	17-17.5		
SK25-18	18	44	17.5-18		
SK25-18.5	18.5	44	18-18.5		
SK25-19	19	44	18.5-19		
SK25-19.5	19.5	44	19-19.5	35.7	57
SK25-20	20	46	19.5-20		
SK25-20.5	20.5	46	20-20.5		
SK25-21	21	46	20.5-21		
SK25-21.5	21.5	46	21-21.5		
SK25-22	22	46	21.5-22		
SK25-22.5	22.5	46	22-22.5		
SK25-23	23	46	22.5-23		
SK25-23.5	23.5	46	23-23.5		
SK25-24	24	46	23.5-24		
SK25-24.5	24.5	46	24-24.5		
SK25-25	25	57	24.5-25		
SK25-25.4	25.4	57	25-25.4		

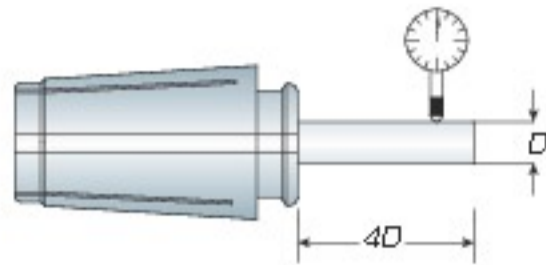
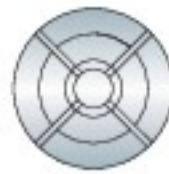
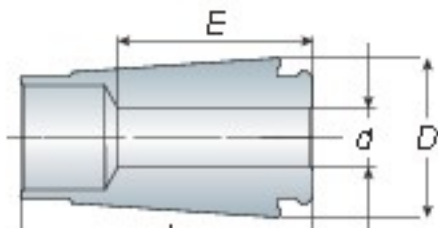
Unit: mm

# Collet for End Mill

立銑專用筒夾

**SK**

**BT / NT**  
series



筒夾等級 Collet Grade	跳動精度 / Runout - Max $\mu$ 4 倍直徑前 - 4xD
A 級	$\leq 10\mu$
AA 級	$\leq 5\mu$



## SK06E (approx. 0.006kgs/pc)

Model No.	d	E	D	L
SK06E-03	3	15	10.4	25
SK06E-3 175	3.175	15		
SK06E-04	4	16		
SK06E-06	6	21		

Unit: mm

## SK10E (approx. 0.02kgs/pc)

Model No.	d	E	D	L
SK10E-03	3	15	15.6	31
SK10E-3 175	3.175	15		
SK10E-04	4	20		
SK10E-05	5	20		
SK10E-06	6	24		
SK10E-08	8	24		
SK10E-10	10	30.5		

Unit: mm

## SK13E (approx. 0.04kgs/pc)

Model No.	d	E	D	L
SK13E-03	3	18	20	39
SK13E-3 175	3.175	18		
SK13E-04	4	20		
SK13E-05	5	20		
SK13E-06	6	24		
SK13E-08	8	28		
SK13E-10	10	30		
SK13E-12	12	39		

Unit: mm

## SK16E (approx. 0.08kgs/pc)

Model No.	d	E	D	L
SK16E-03	3	18	24.6	45
SK16E-3 175	3.175	18		
SK16E-04	4	20		
SK16E-05	5	22		
SK16E-06	6	25		
SK16E-08	8	34		
SK16E-10	10	34		
SK16E-12	12	34		
SK16E-16	16	45		

Unit: mm

## SK20E (approx. 0.15kgs/pc)

Model No.	d	E	D	L
SK20E-04	4	18	29.1	54.3
SK20E-05	5	18		
SK20E-06	6	24		
SK20E-08	8	32		
SK20E-10	10	38		
SK20E-12	12	38		
SK20E-14	14	39		
SK20E-16	16	39		
SK20E-20	20	50		

Unit: mm

## SK25E (approx. 0.25kgs/pc)

Model No.	d	E	D	L
SK25E-06	6	24	35.7	57
SK25E-08	8	32		
SK25E-10	10	40		
SK25E-12	12	42		
SK25E-14	14	42		
SK25E-16	16	44		
SK25E-18	18	44		
SK25E-20	20	46		
SK25E-22	22	46		
SK25E-24	24	46		
SK25E-25	25	57		
SK25E-25 4	25.4	57		

Unit: mm

### Inch Size

Model No.	d
SK06E	1/8, 3/16
SK10E	1/8, 3/16, 1/4, 5/16, 3/8
SK13E	1/8, 3/16, 1/4, 5/16, 3/8, 7/16, 1/2
SK16E	1/8, 3/16, 1/4, 5/16, 3/8, 7/16, 1/2, 9/16, 5/8
SK20E	1/8, 3/16, 1/4, 5/16, 3/8, 7/16, 1/2, 9/16, 5/8, 3/4
SK25E	3/16, 1/4, 5/16, 3/8, 7/16, 1/2, 5/8, 3/4, 1"

- When ordering, please specify the collet grade with A or AA.  
For example: SK10 06 AA or SK10E 04 AA  
SK10 8PCS AA or SK10E 6PCS AA

- The clamping range is 0.25mm if the inside diameter is less than 3mm;  
clamping range is 0.5mm if the inside diameter is over than 3mm.

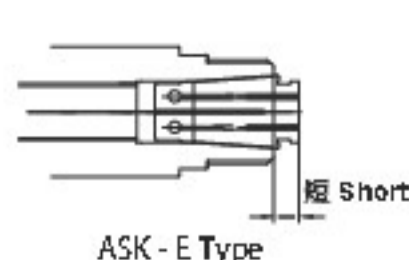
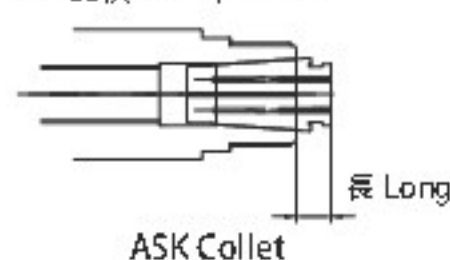
- SK E collets special designed for end mill.

- 請於訂購時註明 A 級或 AA 級  
例：SK10 06 AA or SK10E 04 AA  
SK10 8PCS AA or SK10E 6PCS AA

- 筒夾的孔徑小於 3mm，其夾持範圍為 0.25mm；若大於 3mm 則為 0.5mm

- 立銑刀專用筒夾

\*\*\* 比較 / Compare \*\*\*



- Gripping power of SK E collets is 20 % more than SK collets. Can Provide high stability performance during milling.

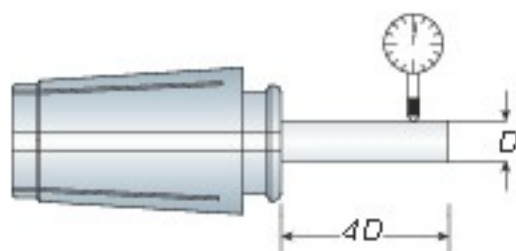
- SK E 型筒夾，夾持力度較 SK 筒夾高 20%，使其能在銑削過程中達到更高的穩定性。

# BT / NT series

# SK

## Collet Set

### 精密筒夾組



筒夾等級 Collet Grade	跳動精度 / Runout - Max $\mu$ 4 倍直徑前 - 4xD
A 級	$\leq 10\mu$
AA 級	$\leq 5\mu$

Model No.	Specification	Weight (kg)
SK10 8PCS	3,4,5,6,7,8,9,10	0.40
SK13 7PCS	3,4,5,6,8,10,12	0.80
SK16 7PCS	3,4,6,8,10,12,16	1.00
SK25 7PCS	6,8,10,12,16,20,25	2.10

Unit: mm

- When ordering, please specify the collet grade with A or AA.  
For example: SK10 06 AA or SK10E 04 AA,  
SK10 8PCS AA or SK10E 6PCS AA
- SK COLLET SET FOR END MILL upon your request.
- 請於訂購時註明 A 級或 AA 級  
例：SK10 06 AA or SK10E 04 AA / SK10 8PCS AA or SK10E 6PCS AA
- 如需 SK 立銼刀專用筒夾組，可另詢

## Collet Box

### 收納盒

Model No.	Qty.	Size	Suit
B SK1021	21	18x10x5cm	SK06 / SK10
B SK1628	28	27x18x7cm	SK13 / SK16

Unit: mm



- Using SK Collet Box to store the collet is beneficial to manage and keep the precision of collet.
- 使用 SK 木盒管理收納筒夾可有利於筒夾保管及長期維持筒夾精度

## Collet Extractor

### 筒夾裝取器



Step 1



- To put collet into the extractor
- 將筒夾裝於裝取器



Step 2



- To put collet and extractor into the ASK nut, then push it to release the collet from the extractor
- 將筒夾置入螺帽定位後推出筒夾

Step 3



- Taking out the extractor
- 取回裝取器

- Each ASK06 holder attach 1 pc collet extractor. Other sizes, must be ordered separately.
- 所有的 ASK06 刀桿均附一個裝取器，其餘尺寸，若有需要請另購

# Wrench

扳手

# ASK

# BT / NT

series

Model No.	D	Weight (kg)
WASK06	19.05	0.30
WASK10 (WAVC06)	27	0.50
WASK13	33	0.65
WASK16 (WAVC12)	40	0.80
WASK20	48	0.80
WASK25 (WASG20)	54	0.85

Unit: mm



Model No.	FIG.	D	Weight (kg)
WASK06C	1	19	0.08
WASK10C	1	25	0.12
WASK13C	1	33	0.18
WASK16AC	1	36.5	0.20
WASK16C	2	40	0.20
WASK20C	2	48	0.22
WASK25C	2	54	0.25

Unit: mm

## C-Type Wrench

C 型扳手



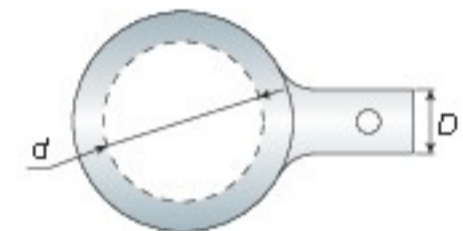
Fig 1



Fig 2

## Wrench Spigot

扭力扳手轉接頭



Model No.	Type	d	D	Suit For	Weight (kg)
ASK06TC	ASK06	19.05	16	ASK06 NUT	0.18
ASK10TC	ASK10	27	16	ASK10 NUT	0.20
ASK13TC	ASK13	33	16	ASK13 NUT	0.23
ASK16TC	ASK16	40	16	ASK16 NUT	0.25
ASK20TC	ASK20	48	16	ASK20 NUT	0.30
ASK25TC	ASK25	54	16	ASK25 NUT	0.35

Unit: mm



WDG-TC

## Spigot Interchangeable Digital Torque Wrench

數位顯示扭力扳手

Model No.	d	L	Nm	lbf-ft	lbf-in	Weight (kg)
WDG 252	16	373	10~135	7.4~99.6	89~1195	0.80
WDG 253	16	548	20~200	14.8~147	178~1780	1.05
WDG 254	16	748	34~340	25~250.9	301~3010	1.35

Unit: mm



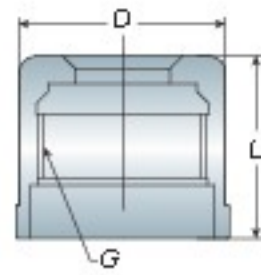
## Torque Wrench

扭力扳手

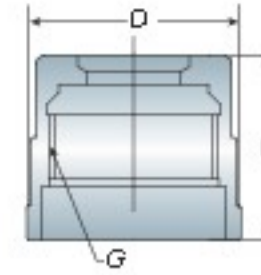
Model No.	d	L	Nm	lbf-ft	lbf-in	Weight (kg)
OP 1710AKB	16	405	20~100	14.8~74	178~890	1.15
OP 1718AK	16	500	40~200	29.6~148	356~1780	1.38
OP 1720AK	16	575	60~320	44.4~236.8	534~2848	1.50

Unit: mm

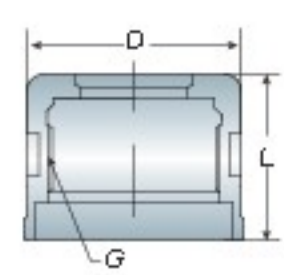




高速螺帽  
High Speed Nut



C 型螺帽 - Fig. 1  
C Type Nut - Fig 1  
ASK06/10/13/16AC



C 型螺帽 - Fig. 2  
C Type Nut - Fig 2  
ASK16/20/25

High Speed Nut 高速螺帽	Model No.	D	L	G	Weight (kg)
	ASK06-NUT	19.05	21	M15x1.0P	0.02
	ASK10-NUT	27	24	M22x1.0P	0.04
	ASK13-NUT	33	27	M27x1.0P	0.08
	ASK16-NUT	40	31	M32x1.5P	0.11
	ASK20-NUT	48	30	M40x1.0P	0.14
	ASK25-NUT	54	37	M45x1.5P	0.23

C Type Nut C 型螺帽	Model No.	FIG.	D	L	G	Weight (kg)
	ASK06C-NUT	1	19.05	21	M15x1.0P	0.02
	ASK10C-NUT	1	27	24	M22x1.0P	0.04
	ASK13C-NUT	1	33	27	M27x1.0P	0.08
	ASK16AC-NUT	1	40	27	M27x1.0P	0.08
	ASK16C-NUT	2	40	31	M32x1.5P	0.11
	ASK20C-NUT	2	48	30	M40x1.0P	0.15
	ASK25C-NUT	2	54	37	M45x1.5P	0.18



Fig.1

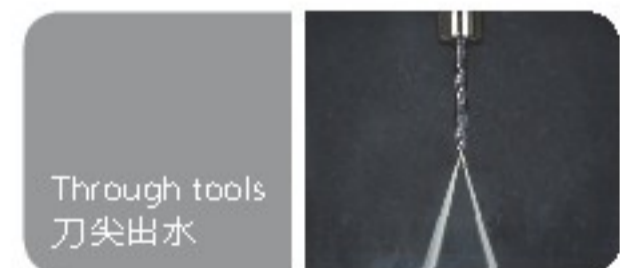
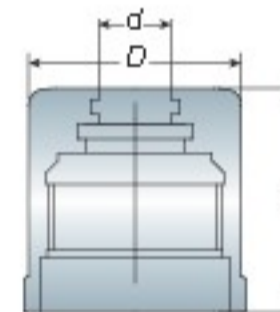
Fig.2

## Coolant Nut

出水螺帽

Model No.	O-ring No.	d	D	L	Weight (kg)
ASK06-D3CL	S-3	3	19.05	26	0.05
ASK06-D4CL	S-4	4			
ASK06-D5CL	S-5	5			
ASK06-D6CL	S-6	6			
ASK10-D3CL	S-3	3	27	28.5	0.04
ASK10-D4CL	S-4	4			
ASK10-D5CL	S-5	5			
ASK10-D6CL	S-6	6			
ASK10-D7CL	S-7	7			
ASK10-D8CL	S-8	8			
ASK10-D9CL	S-9	9			
ASK10-D10CL	S-10	10			
ASK13-D3CL	S-3	3	33	33	0.10
ASK13-D4CL	S-4	4			
ASK13-D5CL	S-5	5			
ASK13-D6CL	S-6	6			
ASK13-D7CL	S-7	7			
ASK13-D8CL	S-8	8			
ASK13-D9CL	S-9	9			
ASK13-D10CL	S-10	10			
ASK13-D11CL	S-11	11			
ASK13-D12CL	S-12	12			
ASK13-D13CL	S-13	13			
ASK16-D3CL	S-3	3	40	37	0.12
ASK16-D4CL	S-4	4			
ASK16-D5CL	S-5	5			
ASK16-D6CL	S-6	6			
ASK16-D7CL	S-7	7			
ASK16-D8CL	S-8	8			
ASK16-D9CL	S-9	9			
ASK16-D10CL	S-10	10			
ASK16-D11CL	S-11	11			
ASK16-D12CL	S-12	12			
ASK16-D13CL	S-13	13			
ASK16-D14CL	S-14	14			
ASK16-D15CL	S-15	15			
ASK16-D16CL	S-16	16			

Unit: mm



- Coolant Nut design with oil seal (O ring). Each nut includes one O ring.
- Complete coolant condition must to use with coolant tool.
- O ring is consumable and it can be bought separately.
- 此款出水螺帽為 "O" 型密封螺帽，每一個螺帽含有一個 O 型環
- 必須搭配中心出水刀具才有完全出水效果
- O 型環為換耗品，可單獨購買

# High Speed Collet Chuck

高轉速高精度立銑刀本體

AVC

BT / NT  
series

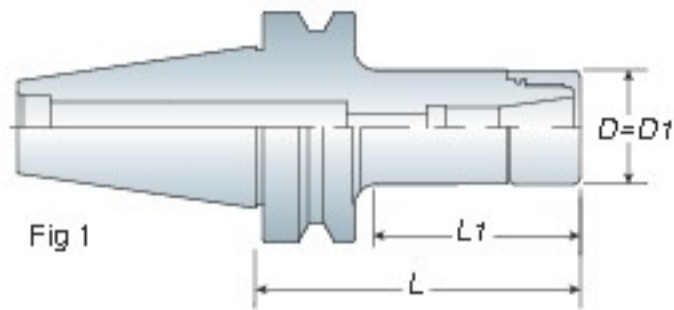


Fig 1

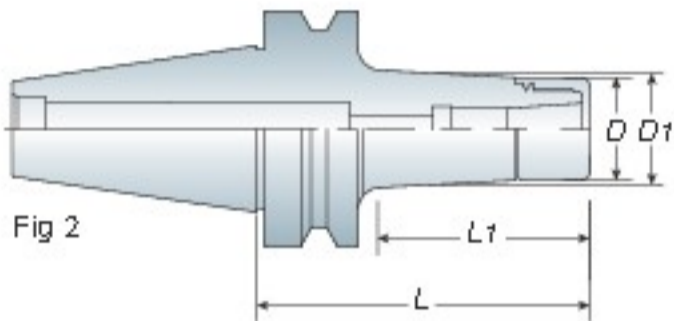


Fig 2



**Through tools must use integer collet and coolant nut together. (refer to P.28)**

需搭配使用整數筒夾及止水螺帽才有刀尖出水效果 (請參考 P.28)

## Features

- AVC long type collet with angle 8° increase clamping force and cutting rigidity and precision.
- Special nut design provides better cutting conditions and reducing cutting vibrations.
- Wrench must be ordered separately.
- Balancing: 30,000 r.p.m G2.5
- 8° 長筒夾設計提升高夾持力，高剛性及高精度
- 刀桿柄壁的增厚設計大幅提升切削剛性
- 螺帽獨特設計可降低高轉速切削時的風阻及噪音並提升工作效能
- AVC 扳手為另購品
- 動平衡：30,000 r.p.m G2.5



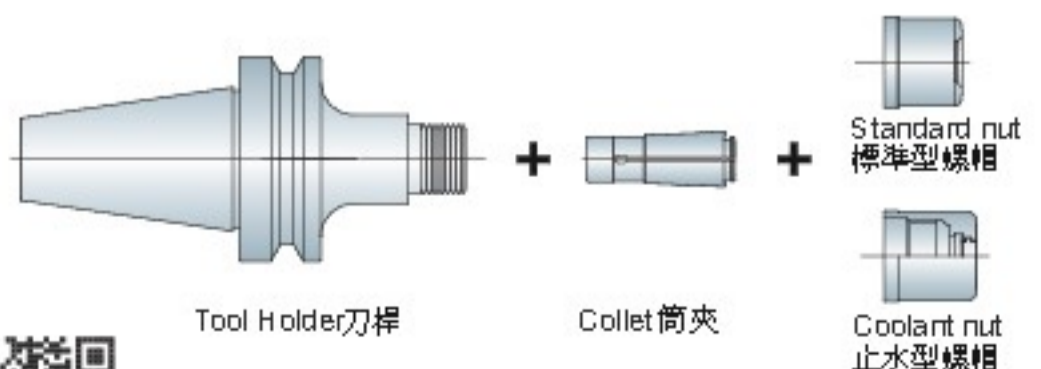
P27- AVC Collet

P28- AVC Nut

P27- Wrench

Model No.	FIG.	Clamping Range	D	D1	L	L1	Weight (kg)
BT 30 AVC06 045	1	2~6	27	27	45	23	0.55
060	2	2~6	27	29	60	35	0.60
090	2	2~6	27	32	90	65	0.80
AVC10 060	1	3~10	33	33	60	40	0.70
090	2	3~10	33	40	90	70	0.80
AVC12 060	1	3~12	40	40	60	37	0.70
090	1	3~12	40	40	90	67	1.00
120	1	3~12	40	40	120	97	1.30
BT 40 AVC06 060	1	2~6	27	27	60	30	1.20
090	2	2~6	27	31	90	60	1.35
120	2	2~6	27	34	120	90	1.50
AVC10 060	1	3~10	33	33	60	35	1.30
090	2	3~10	33	40	90	65	1.50
120	2	3~10	33	44	120	95	1.70
AVC12 060	1	3~12	40	40	60	31	1.30
090	2	3~12	40	44	90	60	1.60
120	2	3~12	40	47	120	90	2.00
BT 50 AVC06 105	2	2~6	27	32	105	62	4.10
135	2	2~6	27	35	135	92	4.30
165	2	2~6	27	38	165	122	4.50
AVC10 105	2	3~10	33	41	105	70	4.30
135	2	3~10	33	44	135	100	4.50
165	2	3~10	33	47	165	130	4.80
AVC12 105	2	3~12	40	44	105	62	4.30
135	2	3~12	40	47	135	92	4.70
165	2	3~12	40	51	165	122	5.10

Unit: mm



Tool Holder 刀桿

Collet 筒夾

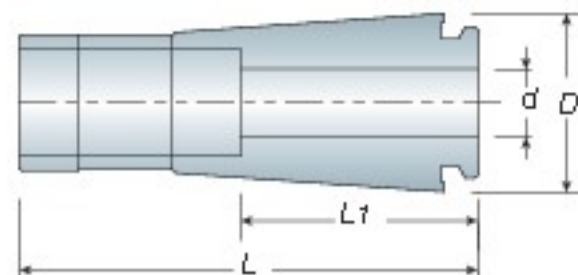
Coolant nut 止水型螺帽



- Coolant Nut: refer to P.28
- 出水螺帽請參考 P.28

**Collet**

高精度立銑刀筒夾



Model No.	d	D	L1	L	Weight (kg)
AVC06-02	2		14		
AVC06-03	3		16		
AVC06-04	4	14	18	40	0.02
AVC06-05	5		20		
AVC06-06	6		22		
AVC10-03	3		16		
AVC10-04	4		18		
AVC10-05	5	17	20	45.5	0.04
AVC10-06	6		22		
AVC10-08	8		28		
AVC10-10	10		30		
AVC12-03	3		16		
AVC12-04	4		18		
AVC12-05	5		20		
AVC12-06	6		22		
AVC12-07	7	21	25	54	0.06
AVC12-08	8		28		
AVC12-09	9		28		
AVC12-10	10		30		
AVC12-11	11		30		
AVC12-12	12		32		

Unit: mm

\* Also has inch size for "d" could be produced by order

\* d尺寸另有英制規格可接受訂單生產

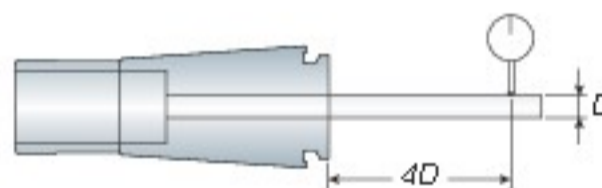
AVC06: 1/8, 3/16, 1/4

AVC10: 1/8, 3/16, 1/4, 5/16, 3/8

AVC12: 1/8, 3/16, 1/4, 5/16, 3/8, 7/16, 1/2



- When ordering, please specify the collet grade with A or AA.  
For example: AVC12 08 AA.
- The tolerance of the tool shank should be h7.
- 請於訂購時註明 A 級或 AA 級  
例：AVC12 08 AA
- AVC 筒夾夾持刀具柄徑公差為 h7



筒夾等級 Collet Grade	跳動精度 / Runout - Max $\mu$ 4 倍直徑前 - 4xD
A 級	$\leq 10\mu$
AA 級	$\leq 5\mu$

**Bearing Wrench**

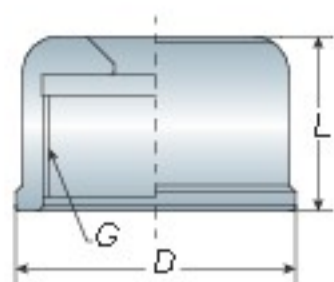
軸承扳手

Model No.	D	Weight (kg)
WAVC06 (WASK10)	27	0.50
WAVC10 (WASK13)	33	0.65
WAVC12 (WASK16)	40	0.80

Unit: mm







## Nut 螺帽

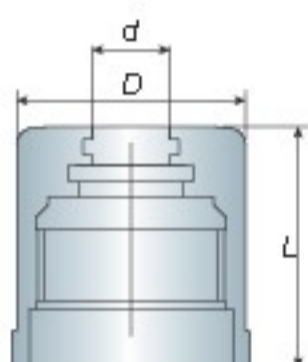
# AVC

## BT / NT series



Model No.	D	L	G	Weight (kg)
AVC06-NUT	27	22	M21.5x1.0P	0.05
AVC10-NUT	33	20.5	M27x1.0P	0.08
AVC12-NUT	40	28	M34x1.0P	0.10

Unit: mm



## Coolant NUT

### 出水螺帽



Through tools  
刀尖出水



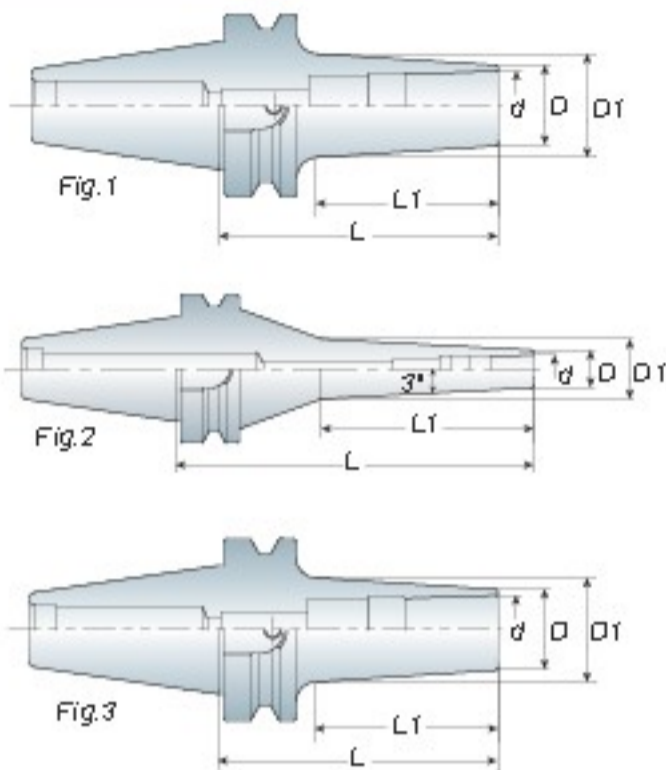
- Coolant Nut design with oil seal(O ring). Each nut includes one O ring.
- Complete coolant condition must to use with coolant tool.
- O ring is consumable and it can be bought separately.
- 此款出水螺帽為 "O" 型密封螺帽，每一個螺帽含有一個 O 型環
- 必須搭配中心出水刀具才有完全出水效果
- O 型環為換耗品，可單獨購買

Model No.	O-ring No.	d	D	L	Weight (kg)
AVC06-03CL	S 3	3			
AVC06-04CL	S 4	4			
AVC06-05CL	S 5	5	27	26	0.07
AVC06-06CL	S 6	6			
AVC10-03CL	S 3	3			
AVC10-04CL	S 4	4			
AVC10-05CL	S 5	5			
AVC10-06CL	S 6	6			
AVC10-07CL	S 7	7	33	32	0.10
AVC10-08CL	S 8	8			
AVC10-09CL	S 9	9			
AVC10-10CL	S 10	10			
AVC12-03CL	S 3	3			
AVC12-04CL	S 4	4			
AVC12-05CL	S 5	5			
AVC12-06CL	S 6	6			
AVC12-07CL	S 7	7	40	33	0.12
AVC12-08CL	S 8	8			
AVC12-09CL	S 9	9			
AVC12-10CL	S 10	10			
AVC12-11CL	S 11	11			
AVC12-12CL	S 12	12			

Unit: mm

## High Speed Collet Chuck

後拉式筒夾刀桿



- ADS06, ADS08: 4mm Hex Wrench
- ADS12, ADS16: 6mm Hex Wrench
- ADS06, ADS08 使用 4mm 六角扳手
- ADS12, ADS16 使用 6mm 六角扳手



- ADS10 / ADS12 / ADS16 CL type upon your request. For example: BT40 ADS12 090 CL
- ADS10 / ADS12 / ADS16 另有冷卻液貫穿型可供選擇，請於訂購時於型號後面加 CL 例 BT40 ADS12 090 CL

### Features

- ADS tool holder is suitable for high speed and high precision cutting. Tool holder designed without nut could reduce cutting vibration.
- Wrench is attached for each ADS tool holder.
- Balancing: 30,000 r.p.m G2.5
- ADS 刀桿適用於高速精密加工，無螺帽設計，降低加工時物件干涉
- 筒夾後拉式設計，操作簡易
- 每支 ADS 刀桿均附 1 支扳手
- 動平衡：30,000 r.p.m G2.5



P30- ADS Collet



Model No.	FIG.	Clamping Range (d)	D	D1	L1	L	Weight (kg)
BT30 ADS06-060	2	2~6	13	15.5	26	60	0.50
-090	2	2~6	13	18	50	90	0.60
-120	1	2~6	13	22.7	88.6	120	0.70
ADS08-060	1	3~8	16	20.5	30	60	0.50
-075	1	3~8	16	22.5	45.5	75	0.60
ADS10-090	1	3~10	21	26	50.5	90	0.65
ADS12-080	1	3~12	23	31	52	80	0.65
-110	1	3~12	23	35	84	110	0.90
ADS16-080	1	5~16	28	33.8	55.2	80	0.80
BT40 ADS06-060	2	2~6	13	16	26	60	1.10
-090	2	2~6	13	17.5	43	90	1.20
-120	2	2~6	13	19.5	58	120	1.30
-150	2	2~6	13	21	74	150	1.50
ADS08-065	1	3~8	16	20	29	65	1.10
-090	1	3~8	16	23	53.7	90	1.20
-120	1	3~8	16	27.5	81.8	120	1.30
-150	2	3~8	16	25.5	90	150	1.50
ADS10-090	1	3~10	21	26	53.5	90	1.20
-120	1	3~10	21	30	83.5	120	1.40
-150	1	3~10	21	33	111.6	150	1.70
ADS12-090	1	3~12	24	31	53.6	90	1.30
-120	1	3~12	24	34.5	83.6	120	1.70
-150	1	3~12	23	38	113.6	150	1.90
-200	1	3~12	24	41	163.6	200	2.10
ADS16-095	1	5~16	29	35	56.6	95	1.40
-125	1	5~16	29	38	88.5	125	1.60
BT50 ADS06-120	1	2~6	13	20.6	73.7	120	3.90
-150	1	2~6	13	24	102.5	150	4.00
-200	1	2~6	13	28.4	146.8	200	4.40
ADS08-095	1	3~8	16	23	47.7	95	3.90
-110	1	3~8	16	25	62.7	110	3.90
-200	1	3~8	16	37.1	150.4	200	4.40
ADS10-100	1	3~10	21	26.5	50.3	100	4.00
-150	1	3~10	21	31.5	100.3	150	4.20
-200	1	3~10	21	37	149.4	200	4.50
ADS12-100	1	3~12	24	30	43	100	4.10
-150	1	3~12	24	36	93	150	4.40
-200	1	3~12	24	43.2	151	200	5.00
ADS16-100	1	5~16	29	34.5	50.6	100	4.00
-125	1	5~16	29	37	75.6	150	4.20
-200	1	5~16	29	44.4	146.8	200	5.00
BT40 ADS12D-075	3	3~12	30	38.2	39	75	1.60
-090	3	3~12	30	41	54	90	1.80
ADS16D-075	3	5~16	40	49	42.6	75	1.70
-090	3	5~16	40	46.5	57.6	90	1.90

Unit: mm

# Straight Shank

直柄後拉式夾頭刀桿

# ADS

# BT / NT

series



Fig.1

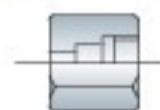
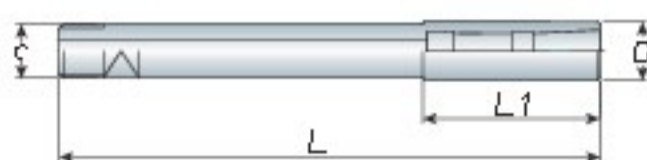


Fig.1



Fig.2

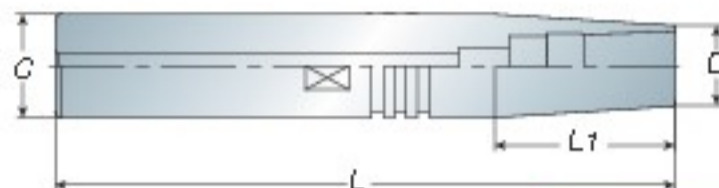


Fig.2

- Wrench is attached for each ADS tool holder.
- 每支 ADS 刀桿均附 1 支扳手

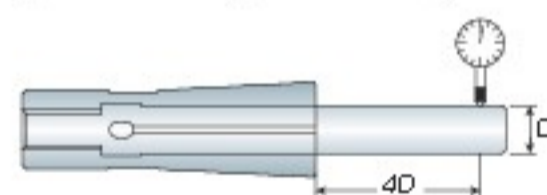
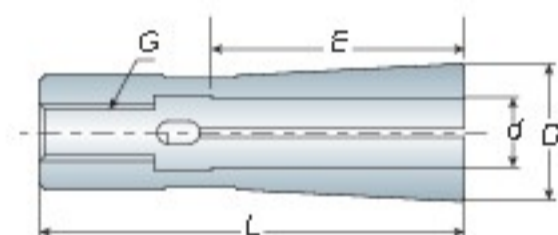
Model No.	FIG.	Clamping Range	C	D	D1	L1	L	Weight (kg)
C12ADS06-120	1	2~6	12	13	10	40	120	0.20
-150	1	2~6	12	13	10	40	150	0.20
C16ADS06-150	2	2~6	16	13	14	38	150	0.20
-200	2	2~6	16	13	14	38	200	0.25
C20ADS06-150	2	2~6	20	13	17	70	150	0.30
-200	2	2~6	20	13	17	70	200	0.40
ADS08-150	2	3~8	20	16	17	50	150	0.30
-200	2	3~8	20	16	17	100	200	0.40
ADS10-200	2	3~10	20	19	17	50	200	0.50
C25ADS08-150	2	3~8	25	16	22	50	150	0.45
-200	2	3~8	25	16	22	100	200	0.60
ADS12-200	2	3~12	25	18	22	50	200	0.80
-250	2	3~12	25	18	22	50	250	1.05

Unit: mm



# Collet

後拉筒夾



Model No.	d	D	L	E	G	Weight (kg)
ADS06-02	2					
ADS06-03	3					
ADS06-3.175	3.175	9.6	36	22	M5x0.8P	0.01
ADS06-04	4					
ADS06-05	5					
ADS06-06	6					
ADS08-03	3					
ADS08-3.175	3.175					
ADS08-04	4					
ADS08-05	5	12	37	22	M5x0.8P	0.02
ADS08-06	6					
ADS08-07	7					
ADS08-08	8					
ADS10-03	3					
ADS10-04	4					
ADS10-05	5					
ADS10-06	6	15	45	27	M6x1.0P	0.05
ADS10-07	7					
ADS10-08	8					
ADS10-09	9					
ADS10-10	10					

Unit: mm

Model No.	d	D	L	E	G	Weight (kg)
ADS12-03	3					
ADS12-3.175	3.175					
ADS12-04	4					
ADS12-05	5					
ADS12-06	6					
ADS12-07	7	18	63	41	M8x1.25P	0.07
ADS12-08	8					
ADS12-09	9					
ADS12-10	10					
ADS12-11	11					
ADS12-12	12					
ADS16-05	5					
ADS16-06	6					
ADS16-07	7					
ADS16-08	8					
ADS16-09	9					
ADS16-10	10					
ADS16-11	11	24	61	45	M8x1.25P	0.13
ADS16-12	12					
ADS16-13	13					
ADS16-14	14					
ADS16-15	15					
ADS16-16	16					

Unit: mm

筒夾等級 Collet Grade	跳動精度 / Runout - Max μ 4 倍直徑前 - 4xD
A 級	≤ 10μ
AA 級	≤ 5μ

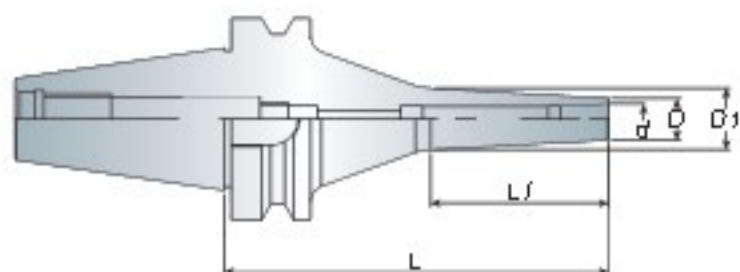
- When ordering, please specify the collet grade with A or AA. For example: ADS12-08AA
- 請於訂購時註明 A 級或 AA 級，例 ADS12-08AA
- ADS06 has other size for choice. Ex.1, 1.1, 1.2, 1.3, 1.4 ... 5.9, 6.0
- Also has inch size for "d" could be produced by order
- ADS06 另有尺寸 1, 1.1, 1.2, 1.3, 1.4 ... 5.9, 6.0 可供選擇
- d 尺寸另有英制規格可接受訂單生產

**BT / NT**  
series

**LDS**

## High Speed Collet Chuck

後拉式筒夾刀桿 - 筒夾加長型



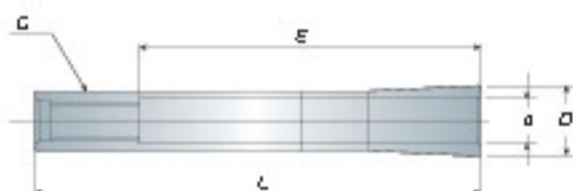
- Long type collet, the inside length is 46mm.
- Holder is suitable for high speed and high precision cutting. Tool holder designed without nut could reduce cutting vibration.
- Wrench is attached for each LDS holder.
- Balancing: 30,000 r.p.m G2.5
- 長筒夾設計，內徑可伸長 46mm
- 刀桿適用於高速精密加工，無螺帽設計，降低加工時物件干涉
- 每支刀桿均附 1 支扳手
- 動平衡：30,000 r.p.m G2.5

Model No.	Clamping Range (d)	D	D1	L1	L	Weight (kg)
BT30 LDS06-090	2~6	13	18	50	90	0.50
BT40 LDS06-090	2~6	13	17.5	43	90	0.60
-120	2~6	13	19.5	58	120	0.70
-150	2~6	13	21	74	150	0.50
BT50 LDS06-120	2~6	13	20.6	73.7	120	0.60
-150	2~6	13	23.8	102.5	150	0.65
-200	2~6	13	28.4	146.8	200	0.65

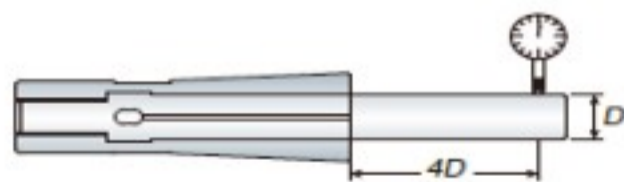
Unit: mm

## Collet

後拉筒夾 - 加長型



- When ordering, please specify the collet grade with A or AA.
- 請於訂購時註明 A 級或 AA 級

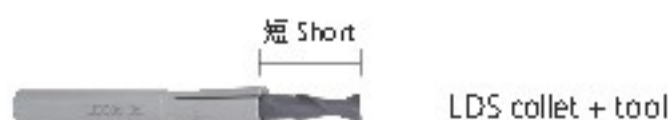


Model No.	d	D	L	E	G	Weight (kg)
LDS06-02	2	9.6	60	46	M5x0.8P	0.02
LDS06-03	3	9.6	60	46	M5x0.8P	0.02
LDS06-3 175	3.175	9.6	60	46	M5x0.8P	0.02
LDS06-04	4	9.6	60	46	M5x0.8P	0.02
LDS06-05	5	9.6	60	46	M5x0.8P	0.02
LDS06-06	6	9.6	60	46	M5x0.8P	0.02

Unit: mm

筒夾等級 Collet Grade	跳動精度 / Runout - Max $\mu$ 4 倍直徑前 - 4xD
A 級	$\leq 10\mu$
AA 級	$\leq 5\mu$

>>> 比較 / Compare >>>



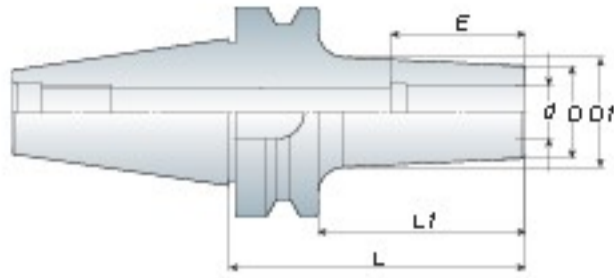
# Shrink Chuck

燒結式刀桿

# ASR

# BT / NT

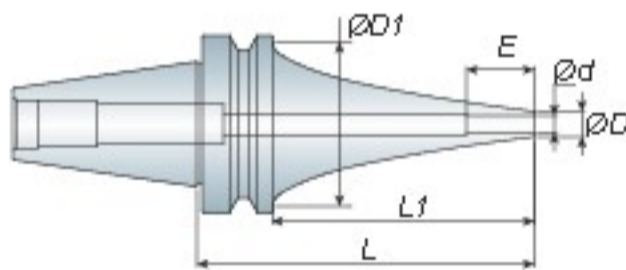
series



- Heater specification => refer to P.34
- Tools are restricted by material of h6 carbide tool.
- 刀桿加熱器規格請參考 P.34
- 刀具限用 h6 鎢鋼刀具

Model No.	d	D	D1	L	L1	E	Weight (kg)
BT30 ASR04-075	4	10	15	75	44	22	0.55
ASR05-075	5	10	15	75	44	24	0.55
ASR06-075	6	14	19	75	47	26	0.55
ASR08-075	8	18	23	75	47	26	0.60
ASR10-075	10	22	27	75	47	32	0.60
ASR12-075	12	24	29	75	47	36	0.65
ASR16-075	16	28	33	75	48	38	0.70
BT40 ASR04-090/120	4	10	16/19	90/120	55/85	22	1.20/1.30
ASR05-090/120	5	10	16/19	90/120	55/85	24	1.20/1.30
ASR06-090/120	6	14	20/23	90/120	54/84	26	1.20/1.30
ASR08-090/120	8	18	24/27	90/120	54/84	26	1.20/1.30
ASR10-090/120	10	22	28/31	90/120	54/84	32	1.30/1.45
ASR12-090/120	12	24	30/33	90/120	54/84	36	1.30/1.50
ASR16-090/120	16	28	34/37	90/120	54/84	38	1.30/1.55
ASR20-100/120	20	34	41/42	100/120	65/84	42	1.50/1.75
ASR25-100/120	25	44	51/54	100/120	68/90	48	1.50/1.80
ASR32-100/120	32	44	51/54	100/120	68/90	50	1.55/1.85
BT50 ASR06-105/160	6	14	21/35	105/160	61/118	26	3.70/3.90
ASR08-105/160	8	18	25/30	105/160	61/113	26	3.80/4.00
ASR10-105/160	10	22	29/34	105/160	61/113	32	4.20/4.50
ASR12-105/160	12	24	31/36	105/160	61/113	36	4.40/4.80
ASR16-105/160	16	28	35/40	105/160	61/113	38	4.40/4.90
ASR20-105/160	20	34	41/45	105/160	61/113	42	4.70/5.20
ASR25-105/160	25	44	51/56	105/160	61/113	48	4.70/5.30
ASR32-105/160	32	44	51/56	105/160	61/113	50	5.00/5.60

Unit: mm



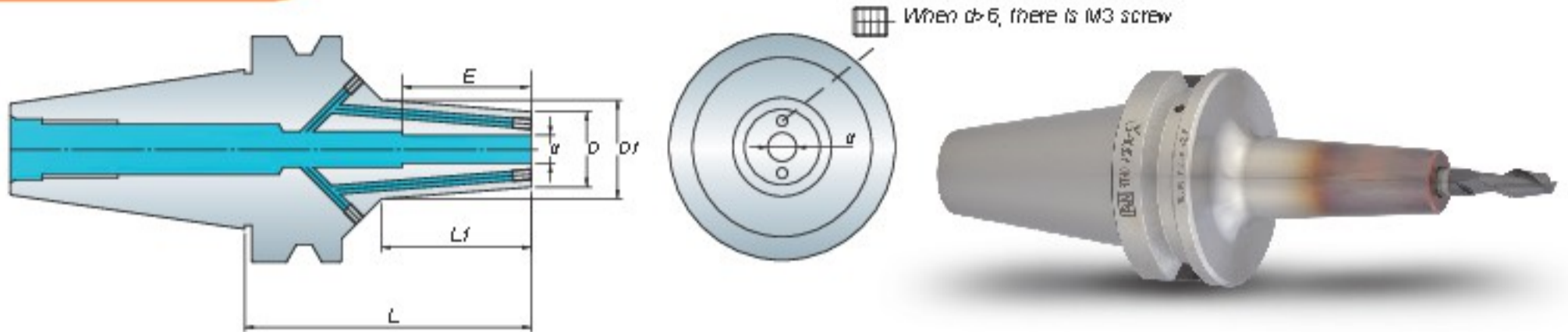
- Heater specification => refer to P.34
- Tools are restricted by material of h6 carbide tool.
- 刀桿加熱器規格請參考 P.34
- 刀具限用 h6 鎢鋼刀具

## Curved Type

燒結式刀桿 - 曲線型

Model No.	d	D	D1	L	L1	E	Weight (kg)
BT30 ASR04-090S/120S	4	7		90/120	68/98	12	2.70/6.50
ASR06-090S/120S	6	9	34	90/120	68/98	18	2.30/5.50
ASR08-090S	8	11		90	68	24	2.20
ASR10-090S	10	13		90	68	30	2.10
BT40 ASR04-090S/120S	4	7		90/120	63/93	12	1.00/1.30
150S/180S	4	7		150/180	123/153	12	1.60/1.90
ASR06-090S/120S	6	9		90/120	63/93	18	1.00/1.30
150S/180S	6	9		150/180	123/153	18	1.60/1.90
ASR08-090S/120S	8	11	53	90/120	63/93	24	1.05/1.30
150S/180S	8	11		150/180	123/153	24	1.60/1.90
ASR10-090S/120S	10	13		90/120	63/93	30	1.30/1.50
150S/180S	10	13		150/180	123/153	30	1.70/1.95
ASR12-090S/120S	12	15		90/120	63/93	30	1.30/1.50
150S/180S	12	15		150/180	123/153	30	1.70/2.00
BT50 ASR04-165S/200S	4	7	85	165/200	127	12	5.30/5.70
ASR06-165S/200S	6	9	85	165/200	127	18	5.20/5.60
ASR08-165S/200S	8	11	85	165/200	127	24	4.90/5.20
ASR10-165S/200S	10	13	85	165/200	127	30	4.90/5.10
ASR12-165S/200S	12	15	84	165/200	127	30	4.90/5.10

Unit: mm



When  $d > 6$ , there is M3 screw

Model No.	d	D	D1	L	L1	E	Weight (kg)
BT40 ASR04-090/120-CL	4	14	22/27	90/120	49/82	22	1.10/1.40
ASR06-090/120-CL	6	21	29/35	90/120	53/86	26	1.20/1.50
ASR08-090/120-CL	8	21	29/35	90/120	53/86	26	1.20/1.50
ASR10-090/120-CL	10	24	33/38	90/120	55/87	32	1.30/1.60
ASR12-090/120-CL	12	24	33/38	90/120	55/87	36	1.30/1.60
ASR16-090/120-CL	16	27	36/41	90/120	56/89	38	1.30/1.60
BT50 ASR06-100/120-CL	6	21	29/32	100/120	44/68	26	3.80/3.90
ASR08-100/120-CL	8	21	29/32	100/120	44/68	26	3.80/3.90
ASR10-100/120-CL	10	24	32/35	100/120	41/65	32	3.90/4.00
ASR12-100/120-CL	12	24	32/35	100/120	41/65	36	3.90/4.00
ASR16-100/120-CL	16	27	35/39	100/120	44/66	38	3.90/4.00
ASR20-100/120-CL	20	33	42/45	100/120	50/67	42	4.00/4.10

Unit: mm

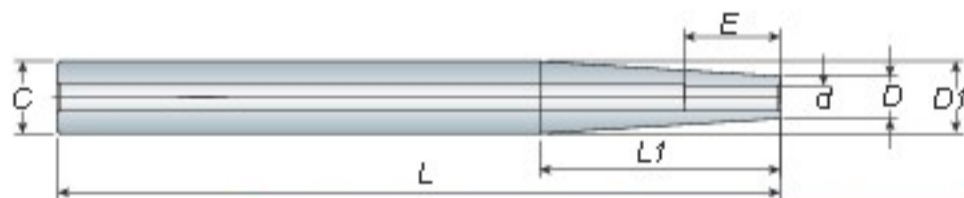


Jet through  
端面出水

- Heater specification => refer to P.34
- Tools are restricted by material of h6 carbide tool.
- 刀桿加熱器規格請參考 P.34
- 刀具限用 h6 鎢鋼刀具

## Straight Shank

直柄燒結式刀桿



Model No.	C	d	D	D1	L	L1	E	Weight (kg)
C12 ASR04-120	12	4	7	11.6	120	40	16	0.20
ASR06-120	12	6	10		120	40	24	0.20
C16 ASR04-150	16	4	7		150	67	12	0.10
ASR06-150	16	6	9	15.5	150	70	18	0.10
ASR08-115	16	8	11		115	50	24	0.10
C20 ASR04-200	20	4	7		200	97	12	0.30
ASR06-175	20	6	9		175	105	18	0.30
ASR08-175	20	8	11	19.5	175	85	24	0.30
ASR10-150	20	10	13		150	70	30	0.20
ASR12-120	20	12	15		120	50	30	0.20
C25 ASR06-230	25	6	9		230	97	18	0.50
ASR08-230	25	8	11	24.5	230	97	24	0.60
ASR10-255	25	10	13		255	135	30	0.70
ASR12-230	25	12	15		230	110	30	0.60

Unit: mm

- Heater specification => refer to P.34
- Tools are restricted by material of h6 carbide tool.
- 刀桿加熱器規格請參考 P.34
- 刀具限用 h6 鎢鋼刀具

# Induction Shrink Machine

感應熱縮式燒結機

# ASR

# BT / NT

series



Model No.	GTS-306 LUXE
Electric current supply 電壓	220VAC (50/60Hz)
Output current 電流	20A
Output power 消耗電力	4KW
Size 尺寸	232mm(W)×360mm(D)×610mm(H)
Weight 重量	13.50 kgs
Holder Support 刀把形式	BT30/BT40/BT50/H SK50/H SK63 (optional 選配)



Model No.	GTS9000M / GTS9000L
Electric current supply 電壓	3 phase 220VAC (50/60Hz)
Output current 電流	27A
Output power 消耗電力	10KW
Size 尺寸	380mm(W)×405mm(D)×655mm(H)
Weight 重量	15.10kgs
Induction Heating head 加熱頭內徑	Ø35mm / Ø50mm
Holder Support 刀把形式	BT30/BT40/BT50/H SK50/H SK63 (optional 選配)

**BT / NT**  
series

**OZ**



- OZ collet chuck can clamp drill, end mills and taps.
- Wrench must be ordered separately.
- OZ 重切削刀桿可用於夾持鑽頭、銼刀及絲攻刀具
- OZ 扳手為另購品



- When ordering, please specify the draw bolt with inch size or metric size.
- 請於訂購時，確認刀桿為英制或公制



- Wrench must be ordered separately.
- MTB type upon your request.
- OZ 扳手為另購品
- 亦有生產 MTB 型可另詢問



- Wrench must be ordered separately.
- OZ 扳手為另購品



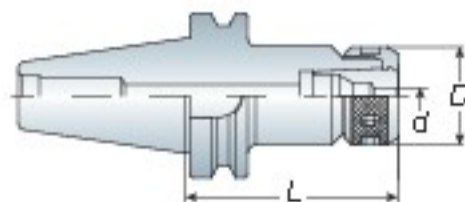
P36- Wrench

P36- OZ Collet

P36- OZ Nut

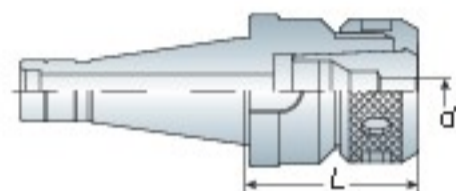
## Collet Chuck

重切削筒夾本體



Model No.	d	D	L	Collet Type	Weight (kg)
BT40 OZ25-080	3~25	60	80	OZ25	1.70
-120	3~25	60	120	OZ25	2.60
OZ32-080	6~32	72	80	OZ32	2.10
-150	6~32	72	150	OZ32	3.60
BT50 OZ25-090	3~25	60	90	OZ25	4.50
-130	3~25	60	130	OZ25	5.10
OZ32-105	6~32	72	105	OZ32	5.40
-150	6~32	72	150	OZ32	6.60

Unit: mm

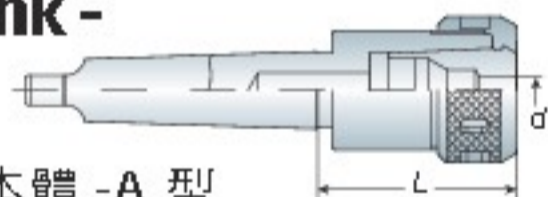


Model No.	d	L	Collet Type	Draw Bolt	Weight (kg)
NT30 OZ25-070	3~25	70	OZ25	1/2"-12	1.10
OZ32-100	6~32	100	OZ32	M12x1.75P	1.60
NT40 OZ25-070	3~25	70	OZ25	5/8"-11	1.60
OZ32-080	6~32	80	OZ32	M16x2.0P	2.20
NT50 OZ25-080	3~25	80	OZ25	1"-8	3.80
OZ32-080	6~32	80	OZ32	M24x3.0P	4.30

Unit: mm

## Morse Taper Shank - Tang Type

莫氏錐度重切削筒夾本體 -A 型

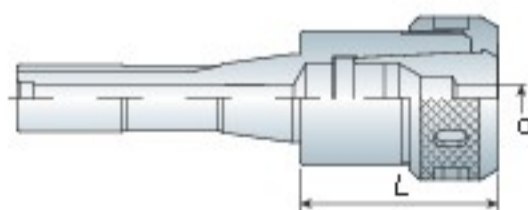


Model No.	d	L	Collet Type	Weight (kg)
MTA5 OZ25-075	3~25	75	OZ25	2.80
OZ32-075	6~32	75	OZ32	3.00

Unit: mm

## R8 Taper Shank

R8 重切削筒夾本體



Model No.	d	L	Collet Type	Weight (kg)
R8 OZ25	3~25	70	OZ25	1.25
OZ32	6~32	87	OZ32	2.20

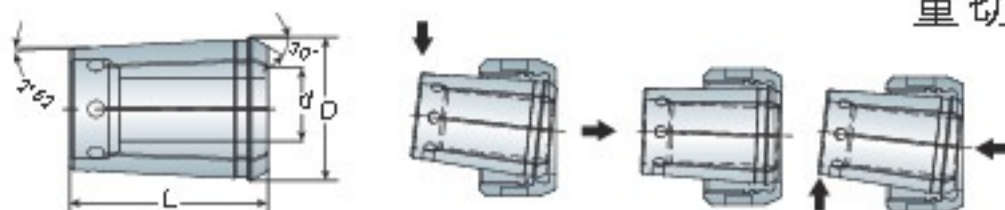
Unit: mm



## Collet 重切削筒夾

# OZ

# BT / NT series



- Collet must be assembled into the clamping nut before inserting into the chuck
- Attaching, and detaching collets

### Metric Size 公制

Model No.	D	L	d	Weight (kg)
OZ25	35.05	52	3,4,5,6,7,8,9,10,11,12,13,14,15,16,17,18,19,20,21,22,23,24,25	0.17
OZ32	44	60	6,7,8,9,10,11,12,13,14,15,16,17,18,19,20,21,22,23,24,25,26,27,28,29,30,31,32	0.36

### Inch Size 英制

Model No.	D	L	d (Inch)	Weight (kg)
OZ25	35.05	52	1/8, 3/16, 1/4, 5/16, 3/8, 7/16, 1/2, 9/16, 5/8, 11/16, 3/4, 13/16, 7/8, 15/16, 1	0.18
OZ32	44	60	1/4, 5/16, 3/8, 7/16, 1/2, 9/16, 5/8, 11/16, 3/4, 13/16, 7/8, 15/16, 1, 1-1/8, 1-1/4	0.36

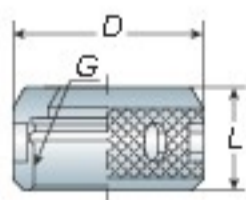


## Collet Set 重切削筒夾組

OZ25 Metric Size 公制		Model No.	Specification	PCS/SET	Weight (kg)
		OZ25-07PCS	6,8,10,12,16,20,25	7PCS/SET	2.00
		OZ25-15PCS	3,4,5,6,7,8,9,10,11,12,13,16,18,20,25	15PCS/SET	3.50
Inch Size 英制		Model No.	Specification	PCS/SET	Weight (kg)
		OZ25-07PCS	1/4, 5/16, 3/8, 1/2, 5/8, 3/4, 1	7PCS/SET	2.10
		OZ25-15PCS	1/8, 3/16, 1/4, 5/16, 3/8, 7/16, 1/2, 9/16, 5/8, 11/16, 3/4, 13/16, 7/8, 15/16, 1	15PCS/SET	3.30
OZ32 Metric Size 公制		Model No.	Specification	PCS/SET	Weight (kg)
		OZ32-08PCS	6,8,10,12,16,20,25,32	8PCS/SET	4.20
		OZ32-15PCS	6,8,10,12,13,14,15,16,18,20,22,25,26,30,32	15PCS/SET	6.50
Inch Size 英制		Model No.	Specification	PCS/SET	Weight (kg)
		OZ32-10PCS	1/4, 5/16, 3/8, 1/2, 5/8, 3/4, 7/8, 1, 1 1/8, 1 1/4	10PCS/SET	4.10
		OZ32-15PCS	1/4, 5/16, 3/8, 7/16, 1/2, 9/16, 5/8, 11/16, 3/4, 13/16, 7/8, 15/16, 1, 1 1/8, 1 1/4	15PCS/SET	6.30



- When ordering, please specify the collet with inch size or metric size.
- 請於訂購時確認筒夾為英制或公制



## Nut 重切削螺帽

Model No.	L	D	G	Collet Type	Weight (kg)
BN25	30	60	M48x2.0P	OZ25	0.30
BN32	33	78	M60x2.5P	OZ32	0.65

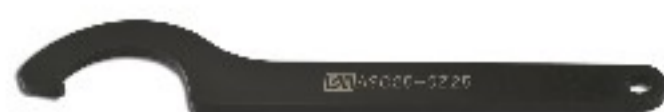
Unit: mm

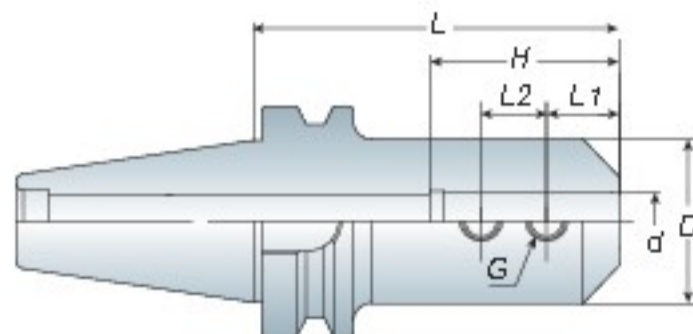


## Wrench 重切削扳手

Model No.	D	Suit For	Weight (kg)
WOZ25	60	BN25	0.30
WOZ32	78	BN32	0.40

Unit: mm





**Features**

- For straight shank end mill.
- End mill is held by two set screws.
- End mill holder comes equipped with set screws.
- 適用於夾持直柄銑刀，可用在一般銑削加工
- 夾持銑刀之固定螺絲共 2 個
- 刀桿本身已裝配固定螺絲

Model No.	d	D	L	L1	L2	H	G	Weight (kg)
BT3D SLA06-060	6	25	60	12	10	32	M6	0.60
SLA08-060	8	28	60	14	12	36	M8	0.65
SLA10-060	10	35	60	15	14	40	M10	0.70
SLA12-060	12	40	60	18	16	45	M10	0.80
SLA16-075	16	45	75	22	18	50	M10	0.80
SLA20-075	20	50	75	25	20	60	M12	1.10
SLA25-075	25	55	75	25	22	65	M12	1.10
BT4D SLA06-075	6	25	75	12	10	32	M6	1.20
-100	6	25	100	12	10	32	M6	1.30
SLA08-075	8	28	75	14	12	36	M8	1.25
-100	8	28	100	14	12	36	M8	1.40
SLA10-075	10	35	75	15	14	40	M10	1.35
-100	10	35	100	15	14	40	M10	1.50
SLA12-075	12	40	75	20	16	45	M10	1.45
-100	12	40	100	20	16	45	M10	1.65
SLA14-075	14	42	75	18	16	45	M10	1.50
-100	14	42	100	18	16	45	M10	1.75
SLA16-075	16	45	75	20	18	50	M10	1.50
-100	16	45	100	20	18	50	M10	1.85
SLA18-075	18	48	75	20	18	50	M12	1.60
-100	18	48	100	22	18	50	M12	1.90
SLA20-075	20	50	75	20	18	60	M12	1.60
-100	20	50	100	25	20	60	M12	2.00
SLA25-075	25	55	75	22	18	65	M12	1.60
-100	25	55	100	25	22	65	M12	2.00
SLA32-090	32	60	90	30	22	70	M16	2.00
SLA40-105	40	80	105	30	22	80	M16	3.10
SLA42-105	42	80	105	30	22	80	M16	3.10
BT5D SLA06-105/150/200	6	25	105/150/200	12	10	32	M6	4.10/4.30/4.60
SLA08-105/150/200	8	28	105/150/200	14	12	36	M8	4.10/4.35/4.65
SLA10-105/150/200	10	35	105/150/200	15	14	40	M10	4.20/4.50/5.10
SLA12-105/150/200	12	40	105/150/200	20	16	45	M10	4.35/4.80/5.30
SLA14-105	14	42	105	18	16	45	M10	4.35
SLA16-105/150/200	16	45	105/150/200	22	18	50	M10	4.45/4.90/5.60
-250/300	16	45	250/300	22	18	50	M10	6.60/6.90
SLA18-105	18	48	105	22	18	55	M10	4.50
SLA20-105/150/200	20	50	105/150/200	25	20	60	M12	4.50/5.20/5.90
-250/300	20	50	250/300	25	20	60	M12	6.60/7.75
SLA25-105/150/200	25	55	105/150/200	25	22	65	M12	4.60/5.40/6.50
-250/300	25	55	250/300	25	22	65	M12	7.00/8.50
SLA32-105/150/200	32	60	105/150/200	30	22	70	M16	4.70/5.80/6.60
-250/300	32	60	250/300	30	22	70	M16	7.60/9.30
SLA40-105/150/200	40	80	105/150/200	30	22	80	M16	5.40/7.00/9.00
-250	40	80	250	30	22	80	M16	10.80
SLA42-105/150/200	42	80	105/150/200	35	25	80	M20	5.50/7.00/8.90
-250	42	80	250	35	25	80	M20	10.80
SLA50.8-105	50.8	95	105	35	25	90	M20	6.00
SLA50.8-150	50.8	95	150	35	25	90	M20	8.50

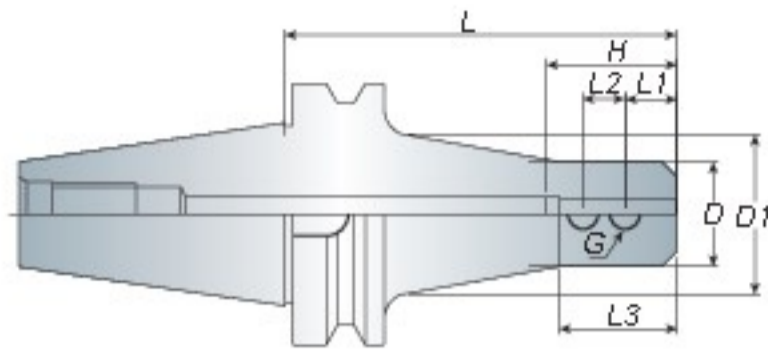
Unit: mm

# End Mill Holder - T Type

側固端銑刀桿 -T 型

SLA

BT / NT  
series



Model No.	d	D	D1	L	L1	L2	L3	H	G	Weight (kg)
BT50 SLA06-150T	6	25	30	150	12	10	35	28	M6	3.90
-200T	6	25	32	200	12	10	35	28	M6	4.20
SLA08-150T	8	28	33	150	14	12	40	36	M8	3.90
-200T	8	28	35	200	14	12	40	36	M8	4.30
SLA10-150T	10	35	40	150	15	14	40	40	M10	4.30
-200T	10	35	42	200	15	14	40	40	M10	4.70
SLA12-150T	12	40	45	150	20	16	45	45	M10	4.50
-200T	12	40	47	220	20	16	45	45	M10	5.10
SLA16-150T	16	45	50	150	22	18	50	55	M10	4.70
-200T	16	45	52	220	22	18	50	55	M10	5.40
SLA20-150T	20	52	57	150	25	20	55	60	M12	5.10
-200T	20	52	57	200	25	20	55	60	M12	5.90
SLA25-150T	25	55	60	150	25	22	60	65	M12	5.40
-200T	25	55	60	200	25	22	60	65	M12	6.40
-250T	25	55	62	250	25	22	60	65	M12	7.50
SLA32-150T	32	60	65	150	30	22	65	70	M16	5.60
-200T	32	60	65	200	30	22	65	70	M16	6.70
-250T	32	60	67	250	30	22	65	70	M16	8.10

Unit: mm

## Features

- For straight shank end mill.
- The holder's shank is with the taper design to make it will the better rigidity. End mill holder comes equipped with set screws.
- End mill is held by two set screws.
- End mill holder comes equipped with set screws.
- 適用於夾持直柄銑刀，可用在一般銑削加工
- 刀柄本身錐度型設計，使其擁有較佳的剛性
- 夾持銑刀之固定螺絲共 2 個
- 刀桿本身已裝配固定螺絲