

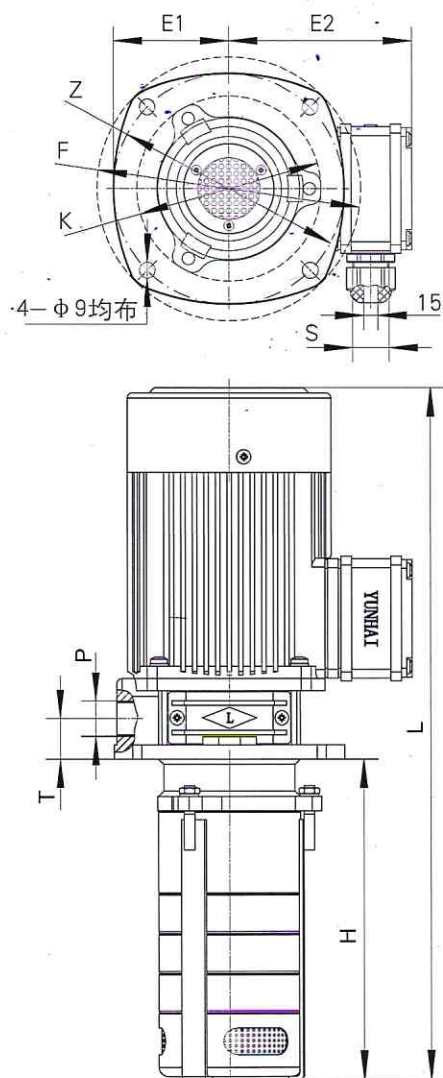
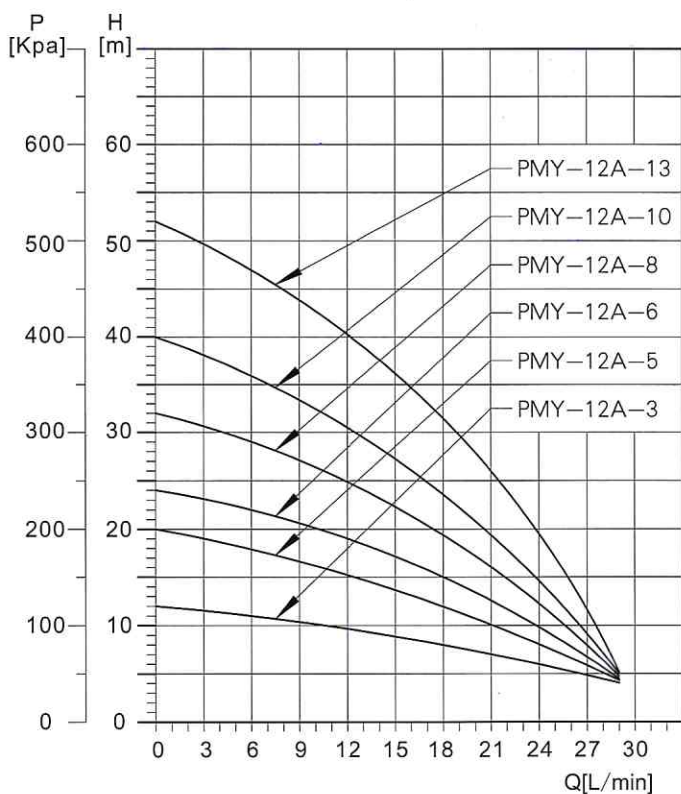
# High-speed centrifugal pumps

PMY80

Immersible pumps  
50Hz

性能曲线 Performance curve

外形图 Appearance in figure



此页名义流量为12L/min,单级扬程为4m(米)

This page is a nominal flow rate is 12L/min, single lift for 4m

ELECTRICAL DATA电机 三相220V/380V 50Hz				DIMENSIONS尺寸									
PUMP TYPE 泵的类型	MOTOR 电机 (pz)KW	CURRENT 电流 (A)	MOTOR EFFICIENCY 效率 (%)	P(吐出口)55° 锥管螺纹 Taper pipe thread	Dimensions尺寸(mm)								
					L	H	T	F	Z(φ)	E1	E2	K(φ)	S(螺牙规格)
PMY-12A-3	0.18	0.91/0.53	69	Rc1/2	391	180	25	149	130	65	103	104	M20×1.5
PMY-12A-5	0.18	0.91/0.53	69	Rc1/2	389	178	25	149	130	65	103	104	M20×1.5
PMY-12A-6	0.18	0.91/0.53	69	Rc1/2	411	200	25	149	130	65	103	104	M20×1.5
PMY-12A-8	0.37	1.66/0.96	73.5	Rc1/2	464	243	25	182	160	80	117	108	M20×1.5
PMY-12A-10	0.37	1.66/0.96	73.5	Rc1/2	508	287	25	182	160	80	117	108	M20×1.5
PMY-12A-13	0.55	2.33/1.35	73.5	Rc1/2	603	354	25	182	160	80	117	108	M20×1.5

由于设计的改进等原因令某些数值的变更,恕不另行通知

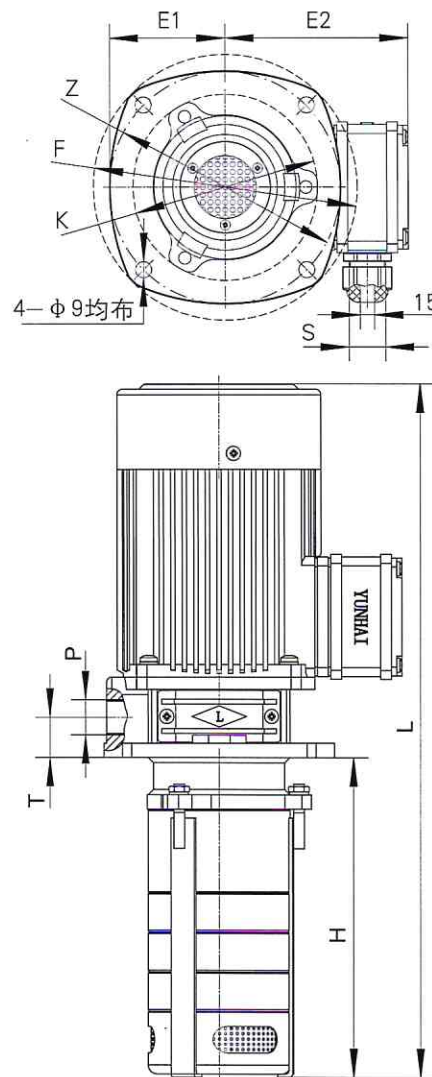
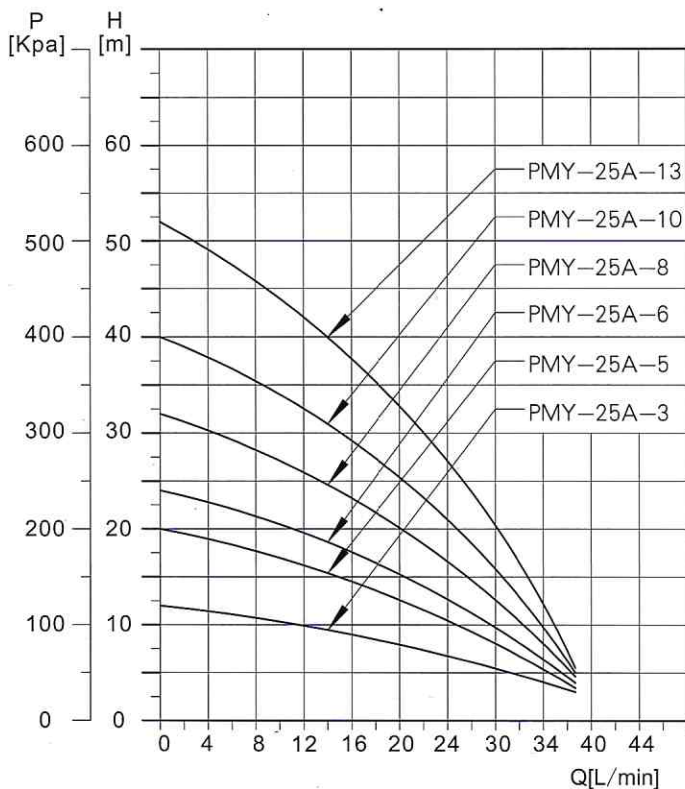
# High-speed centrifugal pumps

PMY80

Immersible pumps  
50Hz

性能曲线 Performance curve

外形图 Appearance in figure



此页名义流量为25L/min,单级扬程为4m(米)

This page is a nominal flow rate is 25L / min, single lift for 4m

ELECTRICAL DATA电机 三相220V/380V 50Hz				DIMENSIONS尺寸										
PUMP TYPE 泵的型号	MOTOR 电机 (pz)KW	CURRENT 电流 (A)	MOTOR EFFICIENCY 效率 (%)	P(吐出口)55° 锥管螺纹	Dimensions尺寸(mm)									
					L	H	T	F	Z(φ)	E1	E2	K(φ)	S(螺牙规格)	
PMY-25A-3	0.18	0.91/0.53	69	Rc1/2	391	180	25	149	130	65	103	104	M20×1.5	
PMY-25A-5	0.18	0.91/0.53	69	Rc1/2	389	178	25	149	130	65	103	104	M20×1.5	
PMY-25A-6	0.37	1.66/0.96	73.5	Rc1/2	421	200	25	182	160	80	117	108	M20×1.5	
PMY-25A-8	0.37	1.66/0.96	73.5	Rc1/2	464	243	25	182	160	80	117	108	M20×1.5	
PMY-25A-10	0.37	1.66/0.96	73.5	Rc1/2	508	287	25	182	160	80	117	108	M20×1.5	
PMY-25A-13	0.55	2.33/1.35	73.5	Rc1/2	603	354	25	182	160	80	117	108	M20×1.5	

由于设计的改进等原因令某些数值的变更,恕不另行通知



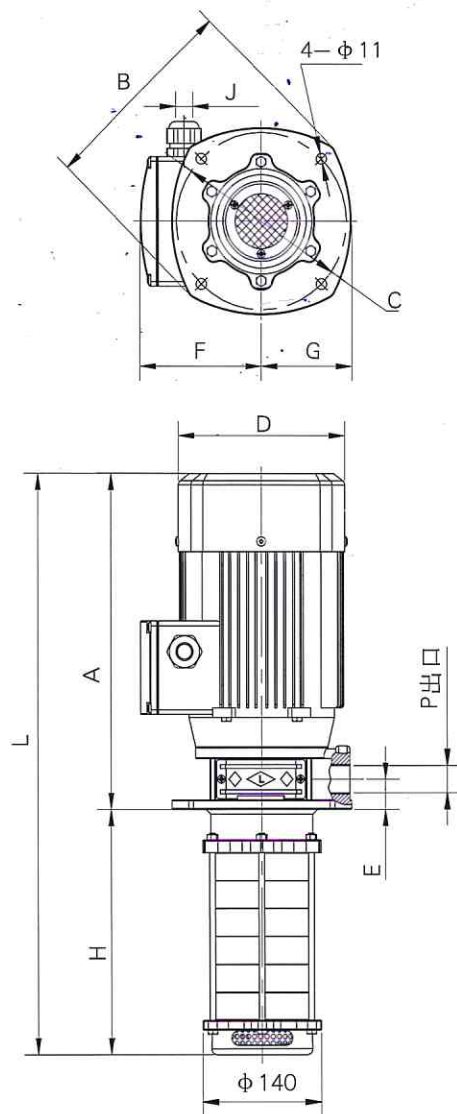
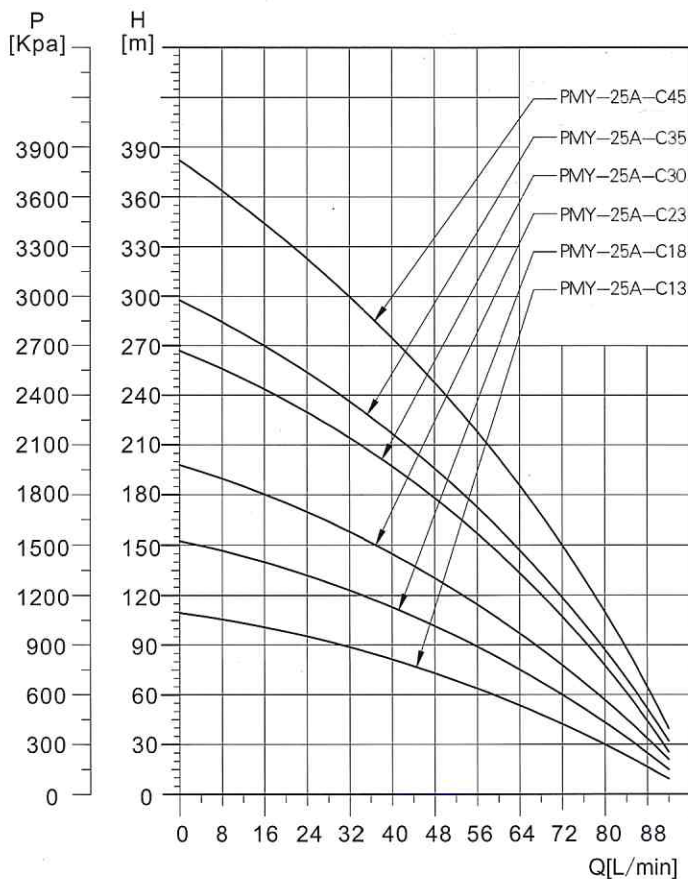
# High-speed centrifugal pumps

PMY110

Immersible pumps  
50Hz

性能曲线 Performance curve

外形图 Appearance in figure



此页名义流量为25L/min, 单级扬程为8.5m(米)

This page is a nominal flow rate is 25L / min, single lift for 8.5m

ELECTRICAL DATA电机 三相220V/380V 50Hz					DIMENSIONS尺寸										
PUMP TYPE 泵的型号	MOTOR 电机 (pz)KW	VOLTAGE 电压	CURRENT 电流 (A)	MOTOR EFFICIENCY 效率 (%)	P(吐出口)55° 锥管螺纹 Taper pipe thread	Dimensions尺寸(mm)									J最大出 线口径(φ)
						L	H	A	B	C	D	E	F	G	
PMY-25A-C13	1.5	220/380	5.94/3.43	79	Rc3/4	688	346	342	213	φ 180	172	36	121	95	15
PMY-25A-C18	2.2	220/380	8.40/4.85	81	Rc3/4	790	448	342	213	φ 180	172	36	121	95	15
PMY-25A-C23	3.0	220/380	10.93/6.31	83	Rc3/4	942	551	391	224	φ 200	195	40	124	100	15
PMY-25A-C30	4.0	380	8.12	85	Rc3/4	1069	694	375	245	φ 200	215	40	150	110	15
PMY-25A-C35	5.5	380	11.04	86	Rc3/4	1247	797	450	255	φ 230	255	40	168	115	15
PMY-25A-C45	5.5	380	11.04	86	Rc3/4	1452	1002	450	255	φ 230	255	40	168	115	15

由于设计的改进等原因令某些数值的变更,恕不另行通知

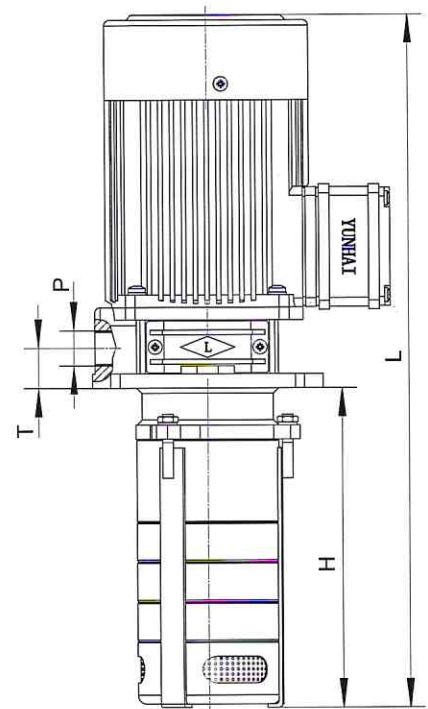
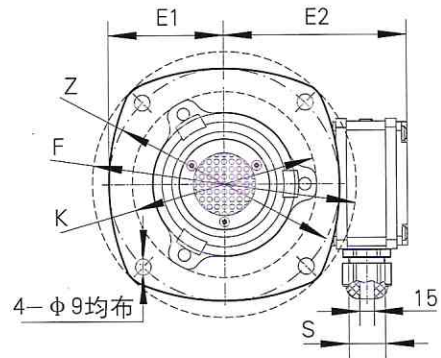
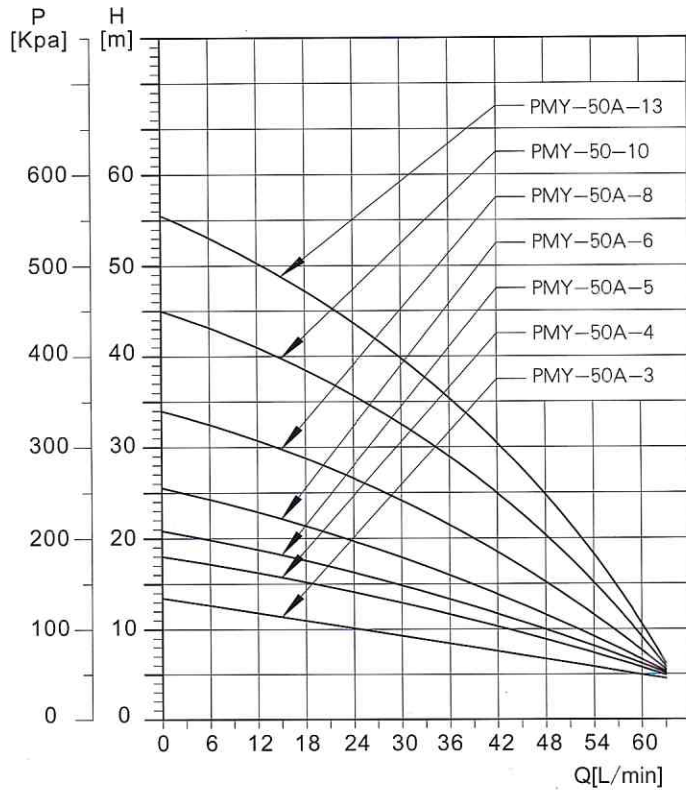
# High-speed centrifugal pumps

PMY80

Immersible pumps  
50Hz

性能曲线 Performance curve

外形图 Appearance in figure



此页名义流量为50L/min,单级扬程为4m(米)

This page is a nominal flow rate is 50L/min, single lift for 4m

ELECTRICAL DATA电机 三相220V/380V 50Hz				DIMENSIONS尺寸										
PUMP TYPE 泵的类型	MOTOR 电机 (pz)KW	CURRENT 电流 (A)	MOTOR EFFICIENCY 效率 (%)	P(吐出口)55° 锥管螺纹	Dimensions尺寸(mm)									
					L	H	T	F	Z(φ)	E1	E2	K(φ)	S(螺牙规格)	
PMY-50A-3	0.18	0.91/0.53	69	Rc3/4	391	180	25	149	130	65	103	104	M20×1.5	
PMY-50A-4	0.18	0.91/0.53	69	Rc3/4	391	180	25	149	130	65	103	104	M20×1.5	
PMY-50A-5	0.25	1.17/0.68	69	Rc3/4	399	188	25	149	130	65	103	104	M20×1.5	
PMY-50A-6	0.37	1.66/0.96	73.5	Rc3/4	433	212	25	182	160	80	117	108	M20×1.5	
PMY-50A-8	0.37	1.66/0.96	73.5	Rc3/4	479	258	25	182	160	80	117	108	M20×1.5	
PMY-50A-10	0.55	2.33/1.35	73.5	Rc3/4	556	307	25	182	160	80	117	108	M20×1.5	
PMY-50A-13	0.55	2.33/1.35	73.5	Rc3/4	629	380	25	182	160	80	117	108	M20×1.5	

由于设计的改进等原因令某些数值的变更,恕不另行通知

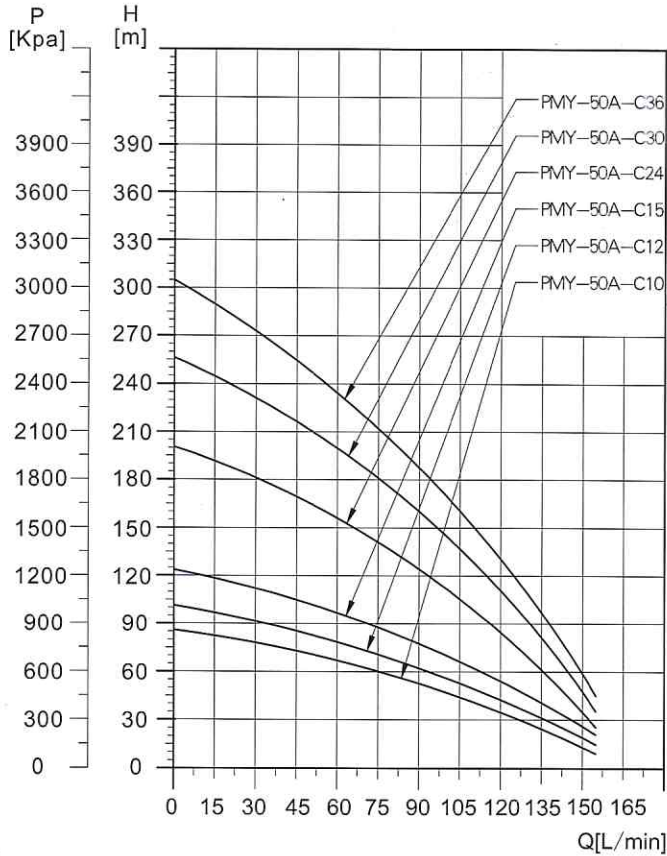


# High-speed centrifugal pumps

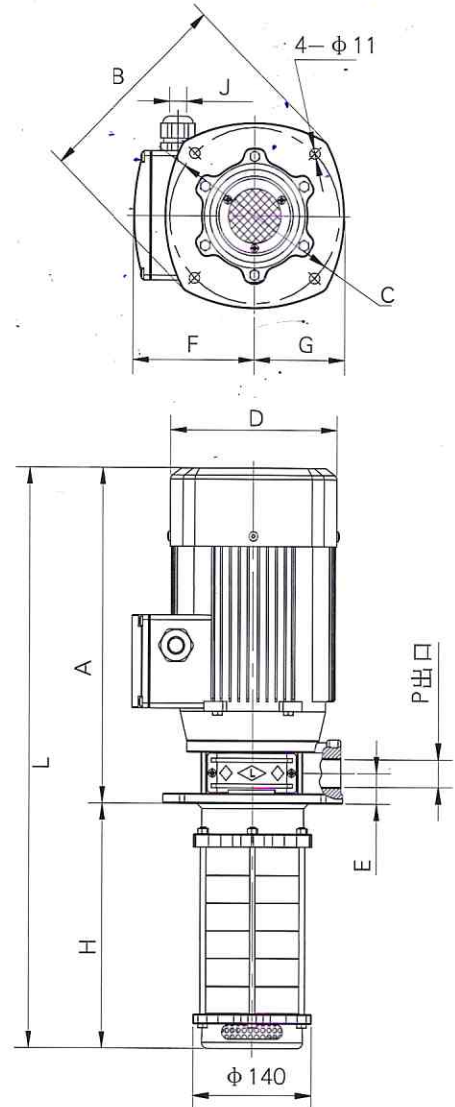
PMY110

Immersible pumps  
50Hz

性能曲线 Performance curve



外形图 Appearance in figure



此页名义流量为50L/min,单级扬程为9m(米)

This page is a nominal flow rate is 50L / min, single lift for 9m

ELECTRICAL DATA电机 三相220V/380V 50Hz					DIMENSIONS尺寸										
PUMP TYPE 泵的型号	MOTOR 电机 (pz)KW	VOLTAGE 电压	CURRENT 电流 (A)	MOTOR EFFICIENCY 效率 (%)	P(吐出口)55° 锥管螺纹 Taper pipe thread	Dimensions尺寸(mm)									J最大出 线口径(φ)
						L	H	A	B	C	D	E	F	G	
PMY-50A-C10	2.2	220/380	8.40/4.85	81	Rc3/4	705	363	342	213	φ 180	172	36	121	95	15
PMY-50A-C12	2.2	220/380	8.40/4.85	81	Rc3/4	761	419	342	213	φ 180	172	36	121	95	15
PMY-50A-C15	3.0	220/380	10.93/6.31	83	Rc3/4	867	476	391	224	φ 200	195	40	124	100	15
PMY-50A-C24	5.5	380	11.04	86	Rc3/4	1209	759	450	255	φ 230	255	40	168	115	15
PMY-50A-C30	7.5	380	14.88	87	Rc3/4	1389	928	461	255	φ 230	275	40	210	115	15
PMY-50A-C36	7.5	380	14.88	87	Rc3/4	1559	1098	461	255	φ 230	275	40	210	115	15

由于设计的改进等原因令某些数值的变更,恕不另行通知

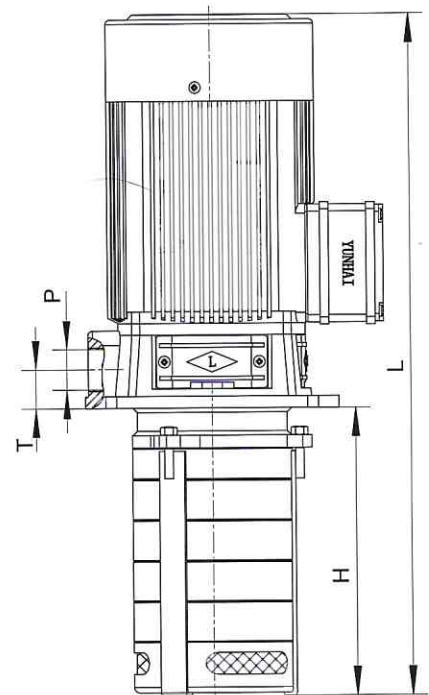
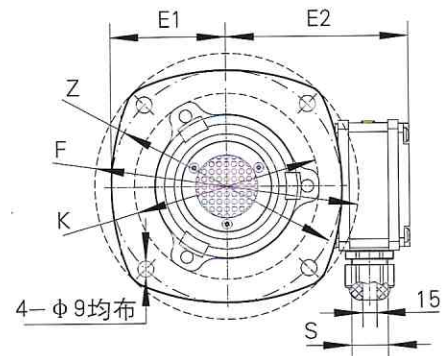
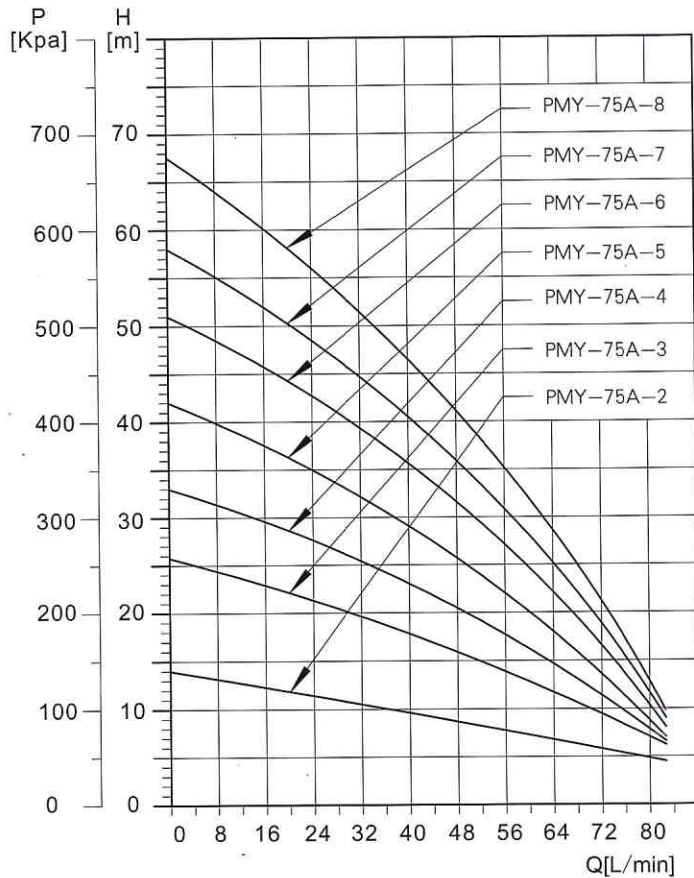
# High-speed centrifugal pumps

Immersible pumps  
50Hz

PMY110

性能曲线 Performance curve

外形图 Appearance in figure



此页名义流量为75L/min, 单级扬程为8m(米)

This page is a nominal flow rate is 75L / min, single lift for 8m

ELECTRICAL DATA电机 三相220V/380V 50Hz				DIMENSIONS尺寸									
PUMP TYPE 泵的类型	MOTOR 电机 (pz)KW	CURRENT 电流 (A)	MOTOR EFFICIENCY 效率 (%)	P(吐出口)55° 锥管螺纹 Taper pipe thread	Dimensions尺寸(mm)								
					L	H	T	F	Z(φ)	E1	E2	K(φ)	S(螺牙规格)
PMY-75A-2	0.37	1.66/0.96	73.5	Rc1	414	180	30	182	160	80	117	136	M20 ×1.5
PMY-75A-3	0.37	1.66/0.96	73.5	Rc1	414	180	30	182	160	80	117	136	M20 ×1.5
PMY-75A-4	0.37	1.66/0.96	73.5	Rc1	414	180	30	182	160	80	117	136	M20 ×1.5
PMY-75A-5	0.55	2.33/1.35	75.5	Rc1	442	180	30	182	160	80	117	136	M20 ×1.5
PMY-75A-6	0.55	2.33/1.35	75.5	Rc1	462	200	30	182	160	80	117	136	M20 ×1.5
PMY-75A-7	0.75	3.03/1.75	76.5	Rc1	481	209	30	200	180	88	120	138	M20 ×1.5
PMY-75A-8	0.75	3.03/1.75	76.5	Rc1	501	229	30	200	180	88	120	138	M20 ×1.5

由于设计的改进等原因令某些数值的变更,恕不另行通知



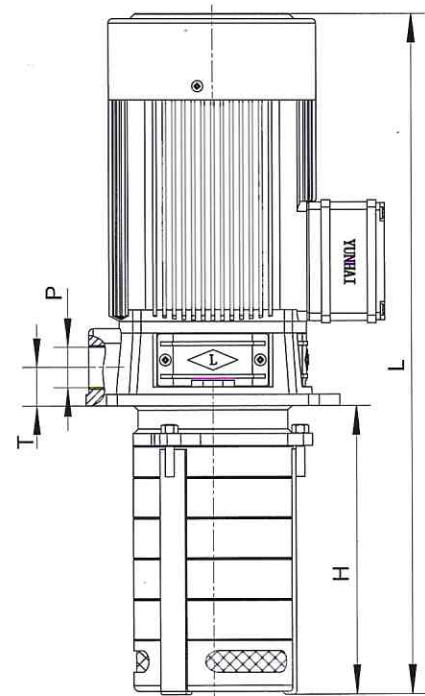
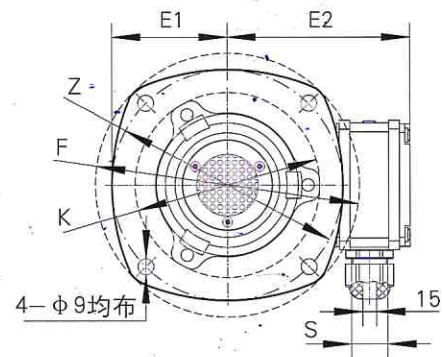
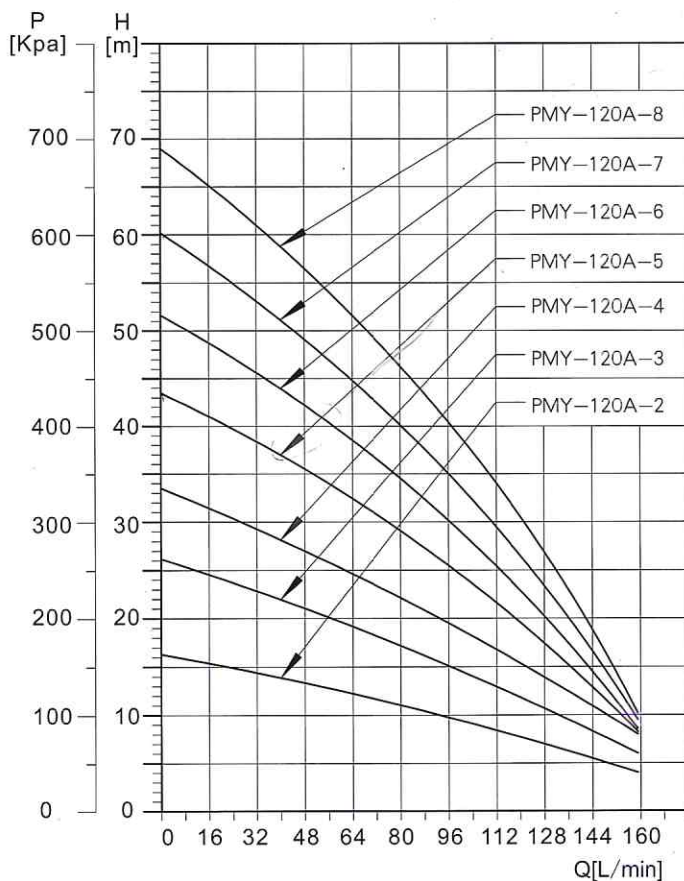
# High-speed centrifugal pumps

PMY110

Immersible pumps  
50Hz

性能曲线 Performance curve

外形图 Appearance in figure



此页名义流量为120L/min,单级扬程为8m(米)

This page is a nominal flow rate is 120L / min, single lift for 8m

ELECTRICAL DATA电机 三相220V/380V 50Hz			
PUMP TYPE 泵的型号	MOTOR 电机 (pz)KW	CURRENT 电流 (A)	MOTOR EFFICIENCY 效率 (%)
PMY-120A-2	0.55	2.33/1.35	75.5
PMY-120A-3	0.75	3.03/1.75	76.5
PMY-120A-4	0.75	3.03/1.75	76.5
PMY-120A-5	1.1	4.41/2.55	77
PMY-120A-6	1.1	4.41/2.55	77
PMY-120A-7	1.5	8.40/4.85	79
PMY-120A-8	1.5	8.40/4.85	79

DIMENSIONS尺寸										
P(吐出口)55° 锥管螺纹 Taper pipe thread	Dimensions尺寸(mm)									
	L	H	T	F	Z(φ)	E1	E2	K(φ)	S(螺牙规格)	
Rc1	452	190	30	182	160	80	117	136	M20×1.5	
Rc1	464	192	30	200	180	88	120	138	M20×1.5	
Rc1	474	202	30	200	180	88	120	138	M20×1.5	
Rc1	495	208	30	200	180	88	120	138	M20×1.5	
Rc1	524	237	30	200	180	88	120	138	M20×1.5	
Rc1	620	278	36	200	180	90	128	140	M28	
Rc1	648	306	36	200	180	90	128	140	M28	

由于设计的改进等原因令某些数值的变更,恕不另行通知

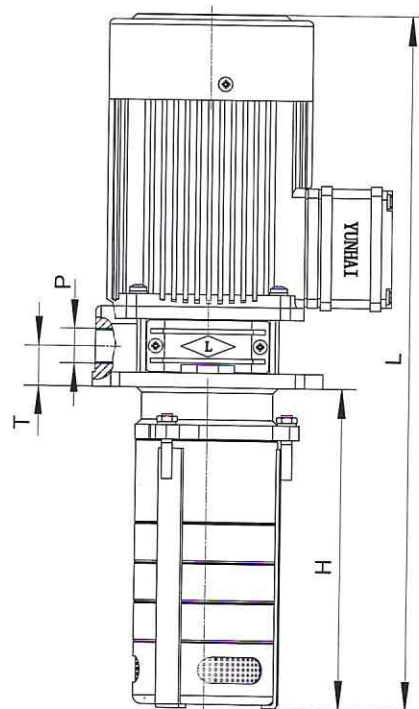
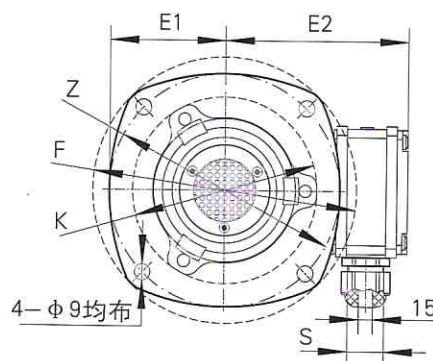
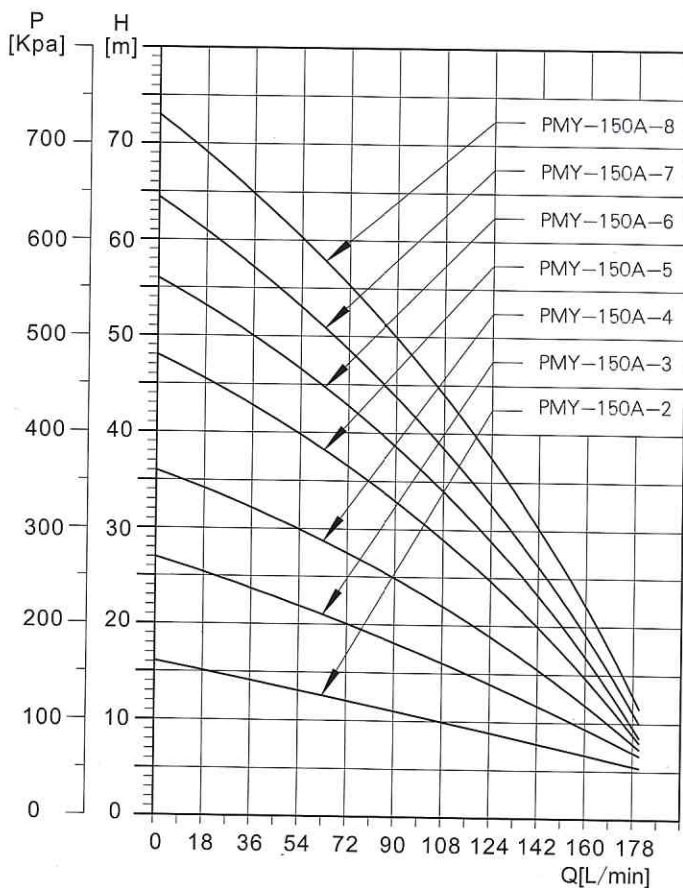
# High-speed centrifugal pumps

PMY110

Immersible pumps  
50Hz

性能曲线 Performance curve

外形图 Appearance in figure



此页名义流量为150L/min,单级扬程为8m(米)

This page is a nominal flow rate is 150L / min, single lift for 8m

ELECTRICAL DATA电机 三相220V/380V 50Hz			
PUMP TYPE 泵的型号	MOTOR 电机 (pz) KW	CURRENT 电流 (A)	MOTOR EFFICIENCY 效率(%)
PMY-150A-2	0.55	2.33/1.35	75.5
PMY-150A-3	0.75	3.03/1.75	76.5
PMY-150A-4	1.1	4.41/2.55	77
PMY-150A-5	1.5	5.94/3.43	79
PMY-150A-6	1.5	5.94/3.43	79
PMY-150A-7	2.2	8.40/4.85	79
PMY-150A-8	2.2	8.40/4.85	81

DIMENSIONS尺寸											
P(吐出口)55° 锥管螺纹 Taper pipe thread	Dimensions尺寸 (mm)										
	L	H	T	F	Z(φ)	E1	E2	K(φ)	S(螺牙规格)		
Rc1 1/4	452	190	30	182	160	80	117	136	M20 × 1.5		
Rc1 1/4	464	192	30	200	180	88	120	138	M20 × 1.5		
Rc1 1/4	489	202	30	200	180	88	120	138	M20 × 1.5		
Rc1 1/4	565	223	36	200	180	90	128	140	M28		
Rc1 1/4	593	251	36	200	180	90	128	140	M28		
Rc1 1/4	620	277	36	200	180	90	128	140	M28		
Rc1 1/4	648	306	36	200	180	90	128	140	M28		

由于设计的改进等原因令某些数值的变更,恕不另行通知



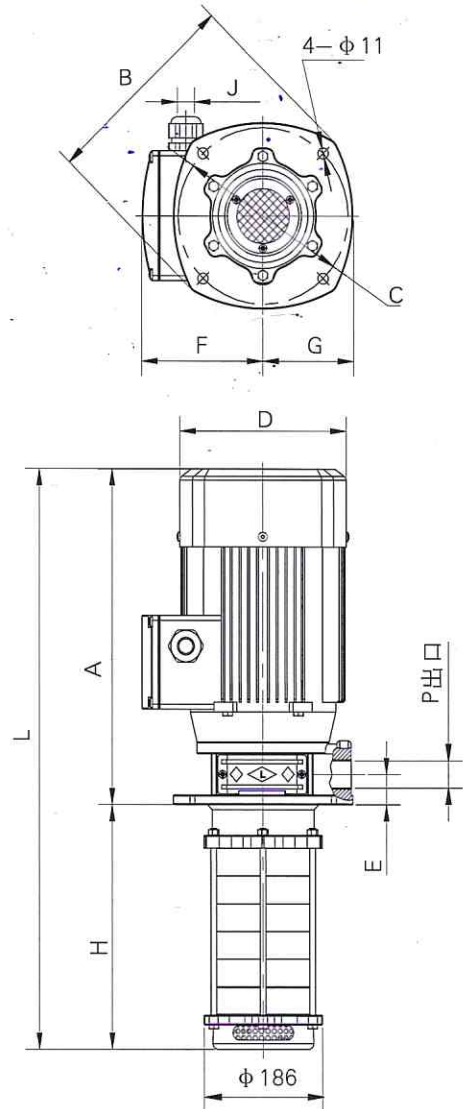
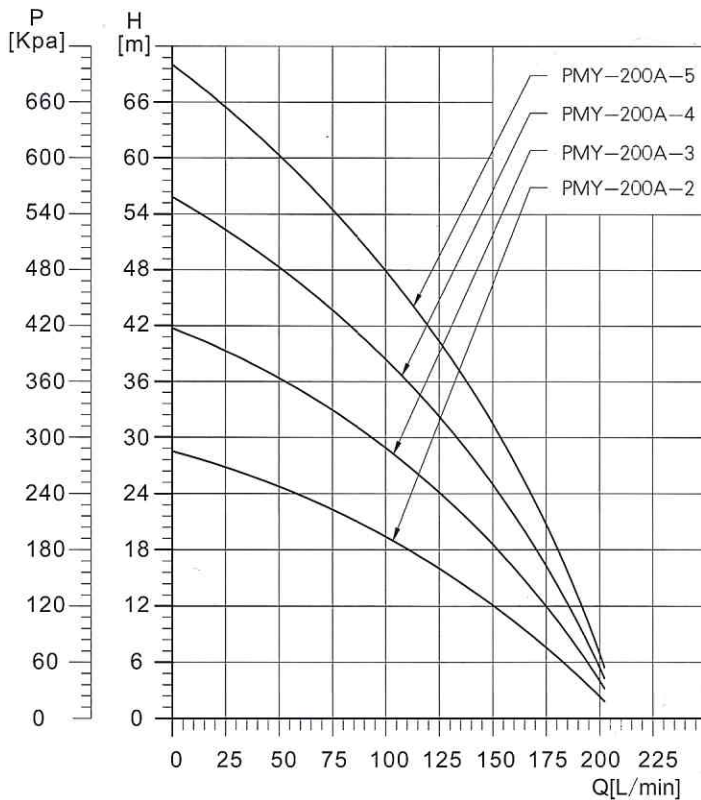
# High-speed centrifugal pumps

PMY150

Immersible pumps  
50Hz

性能曲线 Performance curve

外形图 Appearance in figure



此页名义流量为200L/min,单级扬程为15m(米)

This page is a nominal flow rate is 200L / min, single lift for 15m

ELECTRICAL DATA 电机 三相220V/380V 50Hz					DIMENSIONS尺寸										
PUMP TYPE 泵的类型	MOTOR 电机 (pz) KW	VOLTAGE 电压 (V)	CURRENT 电流 (A)	MOTOR EFFICIENCY 效率(%)	P(吐出口)55° 锥管螺纹 Taper pipe thread	Dimensions尺寸 (mm)								J最大出线 口径(φ)	
						L	H	A	B	C	D	E	F		G
PMY-200A-2	1.5	220/380	5.94/3.43	79	Rc1 1/4	652	300	352	234	φ 210	172	42	121	105	15
PMY-200A-3	2.2	220/380	8.40/4.85	81	Rc1 1/4	652	300	352	234	φ 210	172	42	121	105	15
PMY-200A-4	2.2	220/380	8.40/4.85	81	Rc1 1/4	652	300	352	234	φ 210	172	42	121	105	15
PMY-200A-5	3.0	220/380	10.93/6.31	83	Rc1 1/4	699	300	399	255	φ 210	195	42	124	115	15

由于设计的改进等原因令某些数值的变更,恕不另行通知

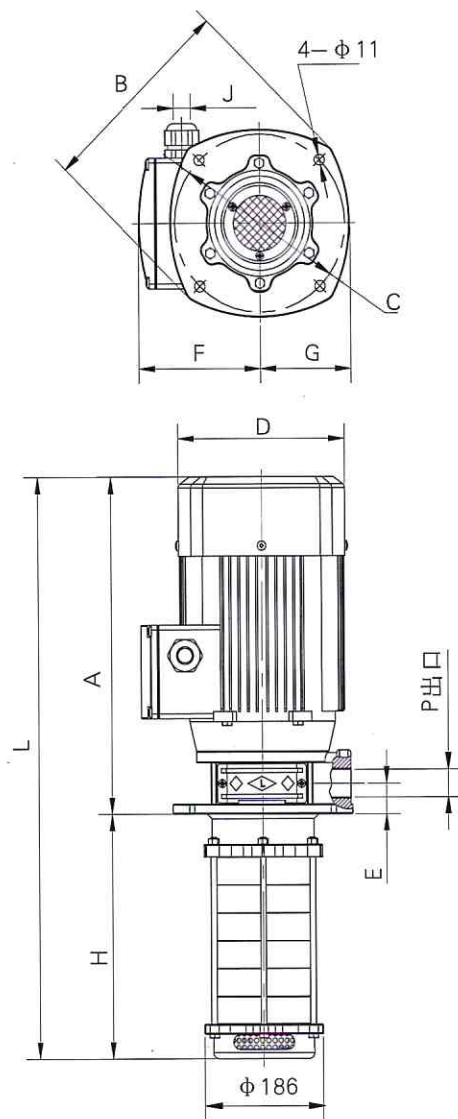
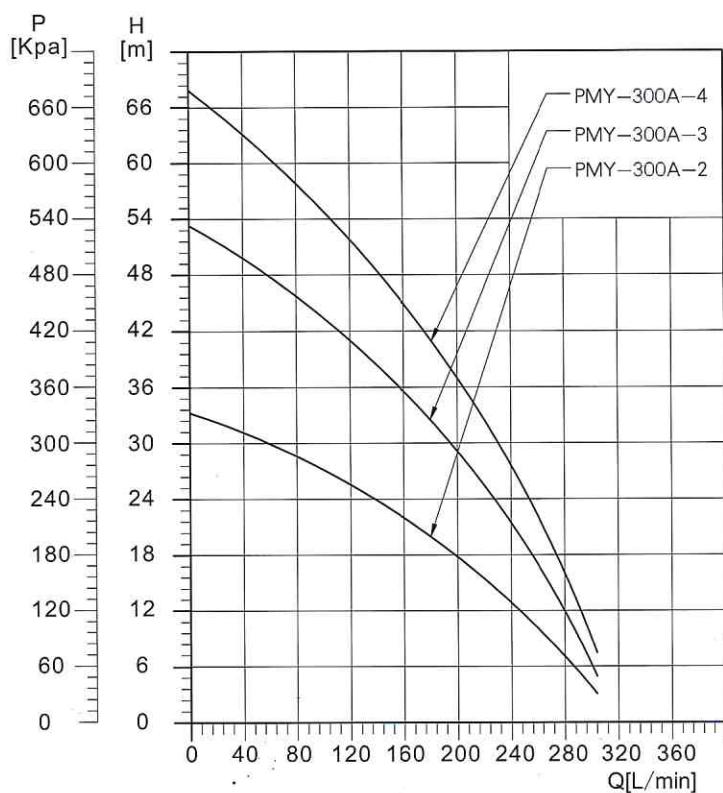
# High-speed centrifugal pumps

PMY150

Immersible pumps  
50Hz

性能曲线 Performance curve

外形图 Appearance in figure



此页名义流量为300L/min,单级扬程为16m(米)

This page is a nominal flow rate is 300L/min, single lift for 16m

ELECTRICAL DATA电机 三相220V/380V 50Hz					DIMENSIONS尺寸										
PUMP TYPE 泵的类型	MOTOR 电机 (pz) KW	VOLTAGE 电压 (V)	CURRENT 电流 (A)	MOTOR EFFICIENCY 效率(%)	P(吐出口)55° 锥管螺纹 Taper pipe thread	Dimensions尺寸 (mm)									J最大出线 口径(φ)
						L	H	A	B	C	D	E	F	G	
PMY-300A-2	2.2	220/380	8.40/4.85	81	Rc1 1/2	652	300	352	234	φ210	172	42	121	105	15
PMY-300A-3	3.0	220/380	10.93/6.31	83	Rc1 1/2	699	300	399	255	φ230	195	42	124	115	15
PMY-300A-4	4.0	380	8.12	85	Rc1 1/2	680	300	380	255	φ230	215	47	150	115	15

由于设计的改进等原因令某些数值的变更,恕不另行通知



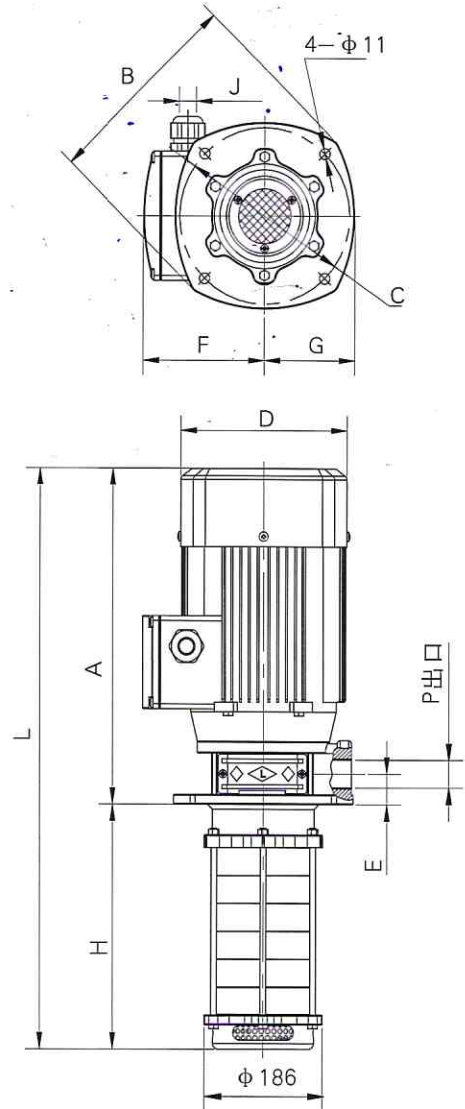
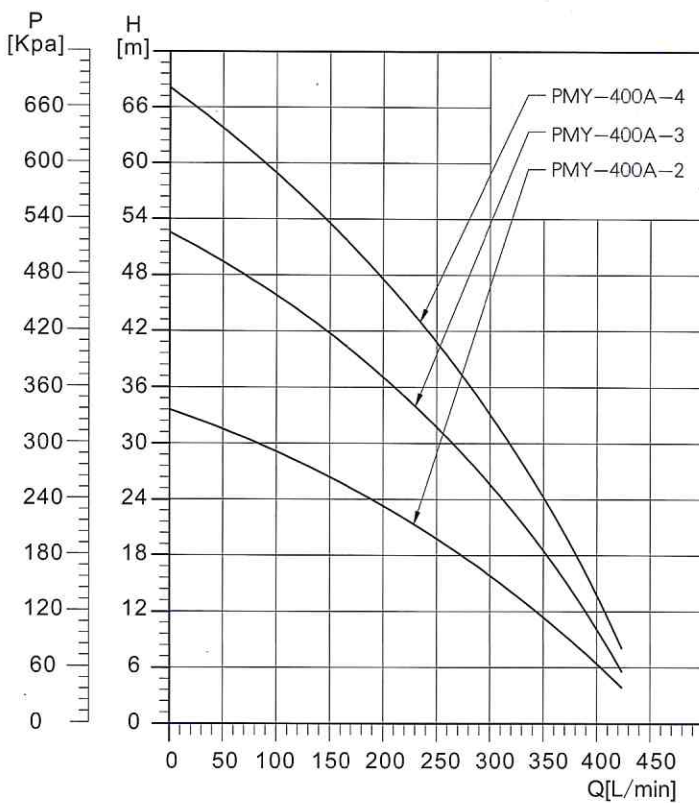
# High-speed centrifugal pumps

PMY150

Immersible pumps  
50Hz

性能曲线 Performance curve

外形图 Appearance in figure



此页名义流量为400L/min,单级扬程为16m(米)

This page is a nominal flow rate is 400L / min, single lift for 16m

ELECTRICAL DATA 电机 三相220V/380V 50Hz					DIMENSIONS 尺寸										
PUMP TYPE 泵的类型	MOTOR 电机 (pz) KW	VOLTAGE 电压 (V)	CURRENT 电流 (A)	MOTOR EFFICIENCY 效率(%)	Dimensions 尺寸 (mm)										J最大出线 口径(φ)
					P(吐出口)55° 锥管螺纹 Taper pipe thread	L	H	A	B	C	D	E	F	G	
PMY-400A-2	3.0	220/380	10.93/6.31	83	Rc1½	719	320	399	255	φ 230	195	42	124	115	15
PMY-400A-3	4.0	380	8.12	85	Rc1½	700	320	380	255	φ 230	215	47	150	115	15
PMY-400A-4	5.5	380	11.04	86	Rc1½	777	320	457	255	φ 230	255	47	150	115	15

由于设计的改进等原因令某些数值的变更,恕不另行通知

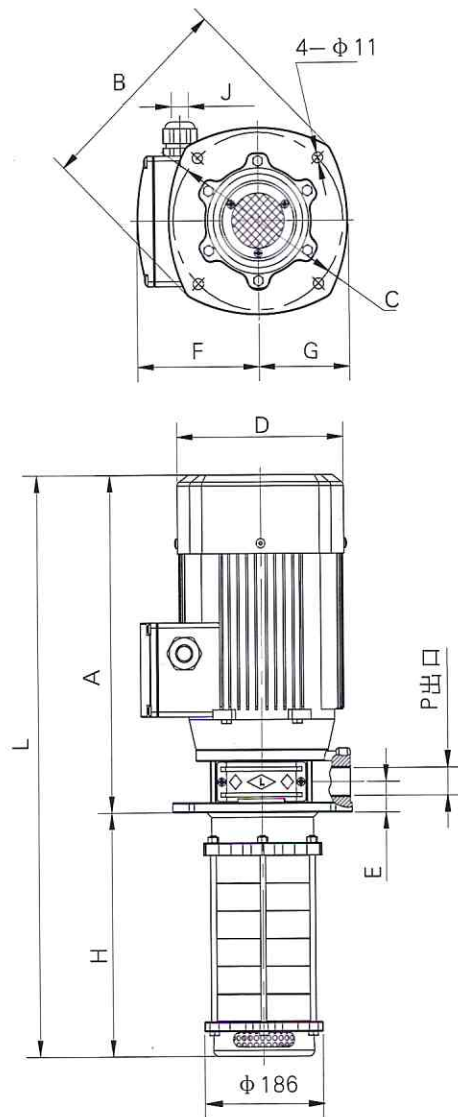
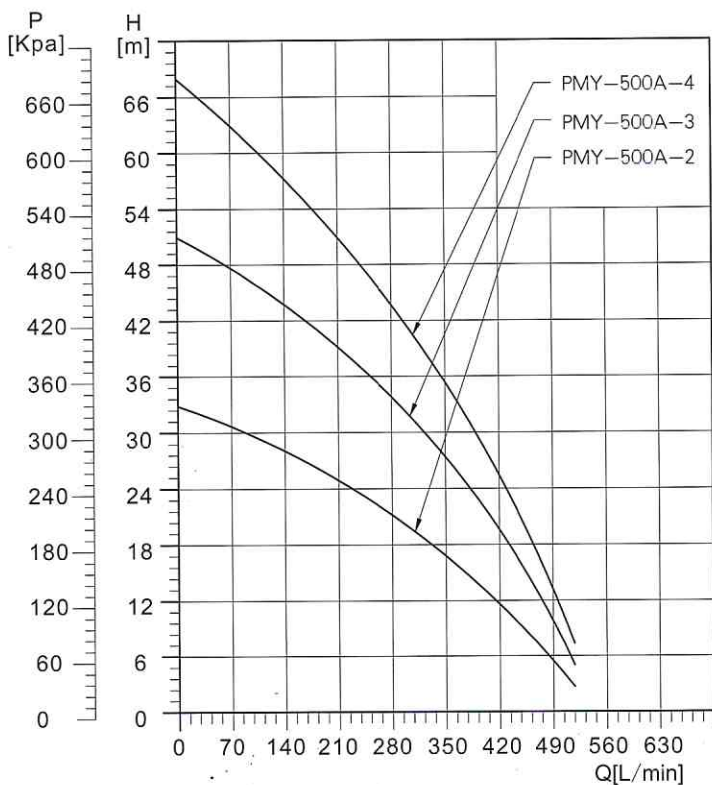
# High-speed centrifugal pumps

Immersible pumps  
50Hz

PMY150

性能曲线 Performance curve

外形图 Appearance in figure



此页名义流量为500L/min,单级扬程为18m(米)

This page is a nominal flow rate is 500L / min, single lift for 18m

ELECTRICAL DATA 电机 三相220V/380V 50Hz					DIMENSIONS尺寸										
PUMP TYPE 泵的类型	MOTOR 电机 (pz) KW	VOLTAGE 电压 (V)	CURRENT 电流 (A)	MOTOR EFFICIENCY 效率(%)	P(吐出口)55° 锥管螺纹 Taper pipe thread	Dimensions尺寸 (mm)									J最大出线 口径(φ)
						L	H	A	B	C	D	E	F	G	
PMY-500A-2	4.0	380	8.12	85	Rc1 1/2	700	320	380	255	φ 230	215	47	150	115	15
PMY-500A-3	5.5	380	11.04	86	Rc1 1/2	777	320	457	255	φ 230	255	47	168	115	15
PMY-500A-4	7.5	380	14.88	87	Rc1 1/2	789	320	469	255	φ 230	275	47	210	115	15

由于设计的改进等原因令某些数值的变更,恕不另行通知



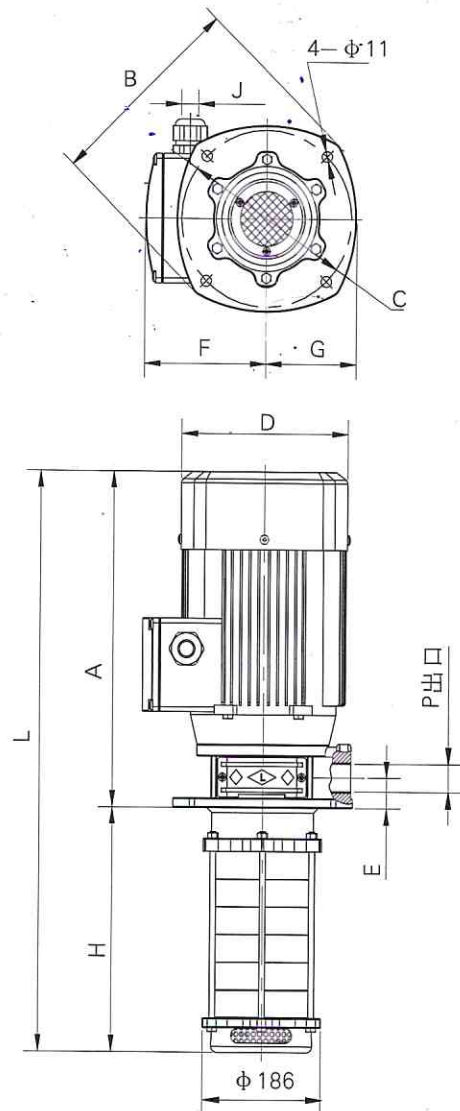
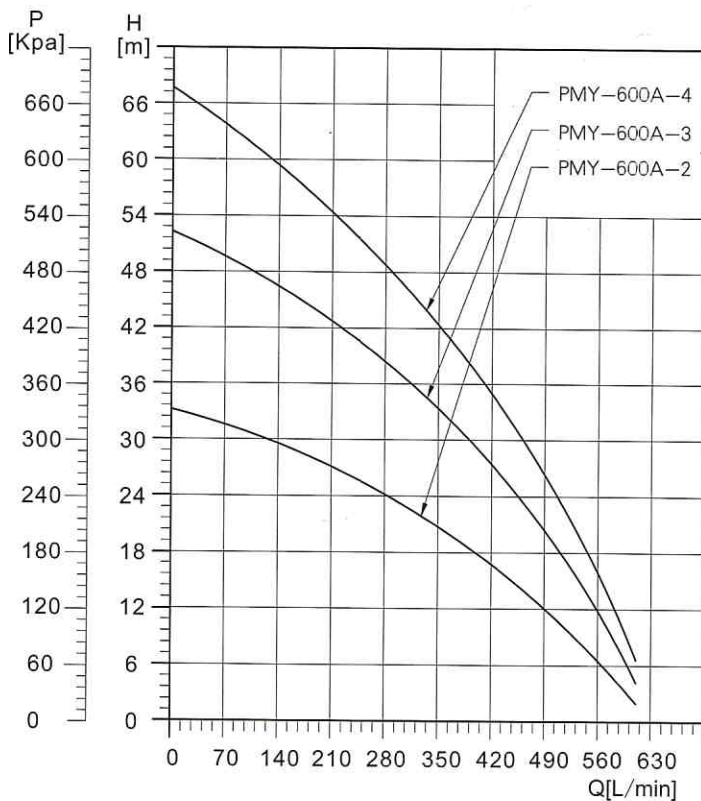
# High-speed centrifugal pumps

PMY150

Immersible pumps  
50Hz

性能曲线 Performance curve

外形图 Appearance in figure



此页名义流量为600L/min, 单级扬程为18m(米)

This page is a nominal flow rate is 600L / min, single lift for 18m

ELECTRICAL DATA 电机 三相220V/380V 50Hz					DIMENSIONS尺寸											
PUMP TYPE 泵的型号	MOTOR 电机 (pz) KW	VOLTAGE 电压 (V)	CURRENT 电流 (A)	MOTOR EFFICIENCY 效率(%)	P(吐出口)55° 锥管螺纹 Taper pipe thread	Dimensions尺寸 (mm)										J最大出线 口径(φ)
						L	H	A	B	C	D	E	F	G		
PMY-600A-2	4.0	380	8.12	85	Rc1 1/2	700	320	380	255	φ 230	215	47	150	115	15	
PMY-600A-3	5.5	380	11.04	86	Rc1 1/2	777	320	457	255	φ 230	255	47	168	115	15	
PMY-600A-4	7.5	380	14.88	87	Rc1 1/2	789	320	469	255	φ 230	275	47	210	115	15	

由于设计的改进等原因令某些数值的变更, 恕不另行通知