

CELLS TEC CO., LTD.

Tel : 886-4-25612199

<http://www.cells.com.tw>

Fax: 886-4-25634189 E-mail : cells.mail@msa.hinet.net

High-Speed Direct Drive **D-Series**

DESCRIPTIONS



Modular Spindle Technology

D-09508E/02

Standard functions

◎Application			
Housing	Cartridge With flange mounted		
Tool adapter	DIN 69871/69872 ISO 7388/1/1 Type A		
	ANSI B5.50-78 ISO 7388/1/2 Type B		
	MAS 403-1982-BT/PT-2 (30°)		
	MAS 403-1982-BT/PT-1 (45°)		
Direction of rotation	DIN 69893-1 ISO 12164-1		
Direction of rotation	Clockwise and Counter-clockwise		
Operating position	Horizontal/vertical		
Maximum speed	Refer to the characteristic data sheet		
Bearing lubrication	Grease lubricate		
Bearing seal at front	Purge air Labyrinths		
Medium connections	Cooling x 2	PT 1/8	ϕ 8mm diameter
	External Coolant x 1	PT 1/8	ϕ12mm diameter
	Purge air x 1	PT 1/8	ϕ 6mm diameter
	Taper cleaning air x 1	PT 1/8	ϕ 8mm diameter
	*Caution: through rotator union when with CTS		
	Pneumatic cylinder-oil x 1	PT 1/8	(1/4*1W-Oil pipe)
	Pneumatic cylinder-air x 1	PT 1/8	ϕ 8mm diameter
◎Tool clamping device			
Gripper	SK/CAT/BT/ISO	Spring type	
	HSK	OTT	
Release using pneumatic cylinder	D30-120 D40-120 D40-150	50-80 bar / Mini 60 C.C.	
	D50-190	50~80 bar/ Mini 90 C.C.	



Technical specifications

◎Spindle cooling

Cooling medium	Cooling capacity > 1 kW, Adjust coolant temperature (+2°C)
Cooling With oil	ISO VG10~22
Pressure	3~5 bar
Flow rate	8 l/min
Filter size	100 μm

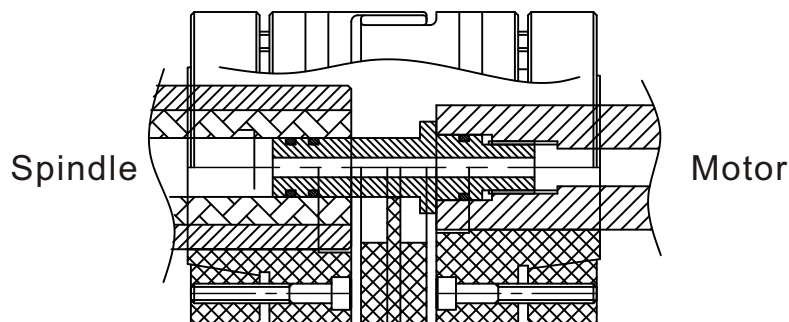
◎Tool Taper cleaning

Pressure	>5 bar
Filter size	50 μm

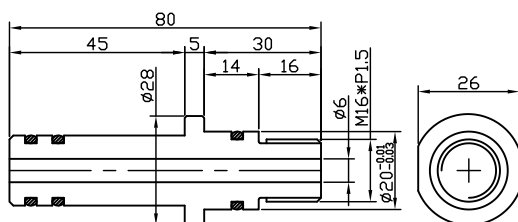
◎Purge air

Pressure	1~1.5 bar
Filter size	8 μm
Flow	1.0 ... 1.5 Nm ³ /h

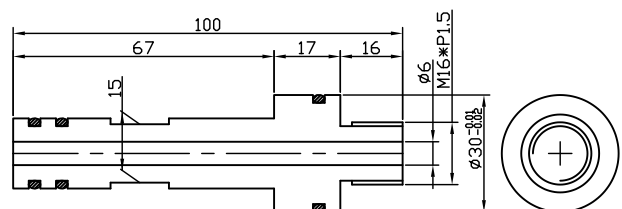
◎CTS (Option C)

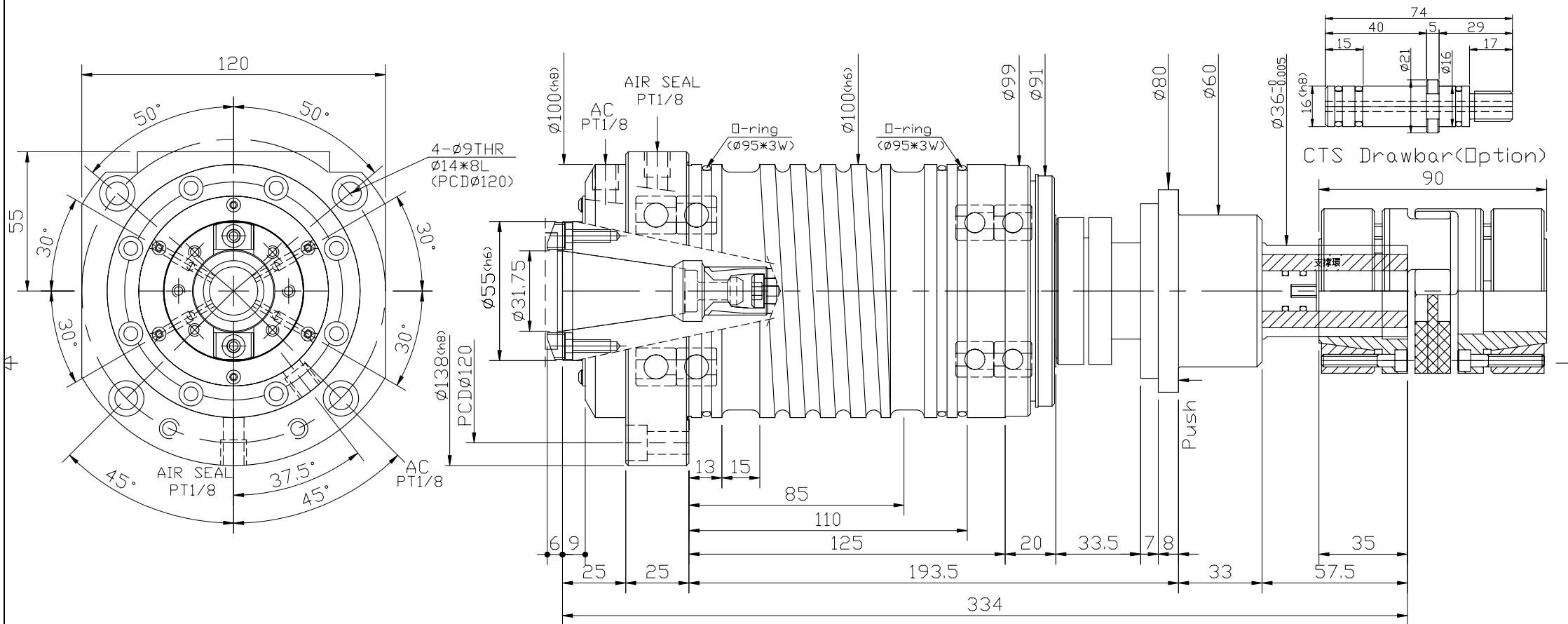


40#CTS Drawbar




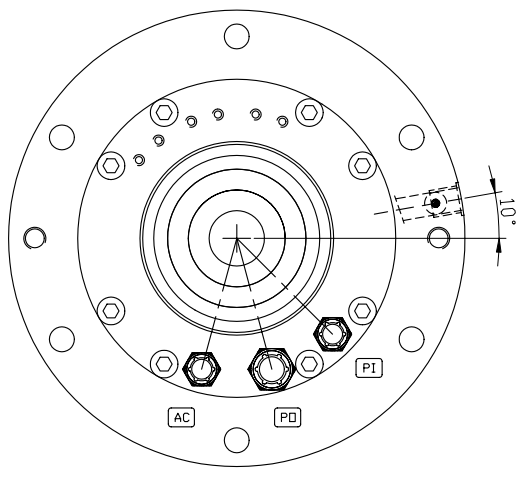
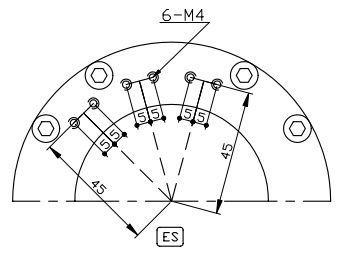
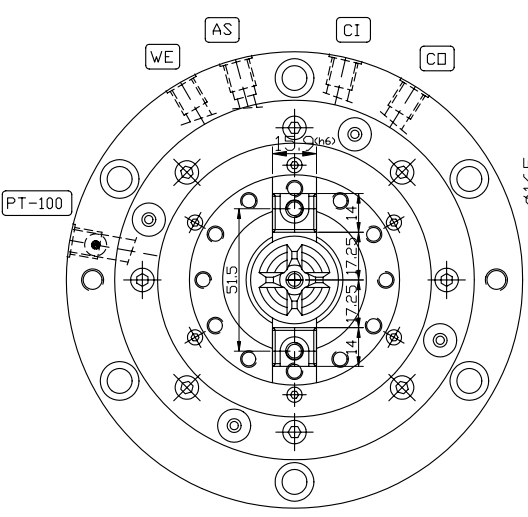
50#CTS Drawbar



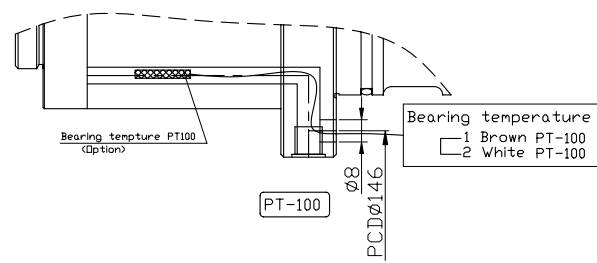
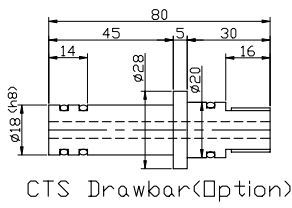
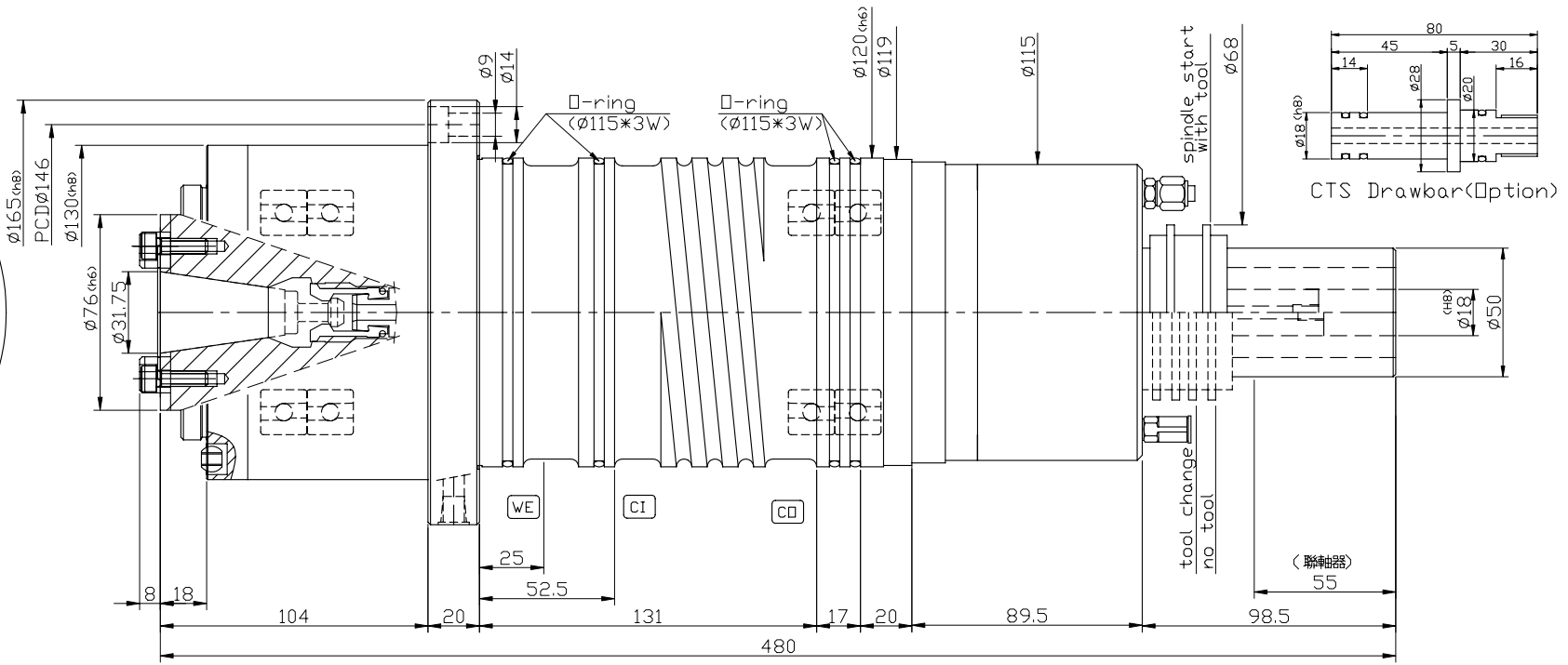


	RPM	Bearing	Preload	Lubrication	Pull-force(N)	Tool-standard	Number
T Y	12,000	HS7009E	Rigid	Grease	2,500	BT or ISO	NO CTS:095.098.012.G19 CTS:095.098.012.H19
		HS7008E					
P E	15,000	HC7009E	Rigid	Grease	2,500	CAT SK	NO CTS:095.098.015.G19 CTS:095.098.015.H19
		HC7008E					

Itemref	Quantity	Title/Name, designation, material, dimension etc			Article No./Reference	
Designed by	Checked by	Approved by - date	Filename	Date	Scale	1:1
 CELLS 農文木各禾斗才支		Name	D30-100			
		Number	095.098.015.G19	095.098.015.H19	Edition	Sheet



REAR



Tool holder standard
 Balance ISO 1940 part 1
 Tool type DING69871/69872 ISO 7388/1/1 TypeA
 ANSI B 5.50-78 ISO 7388/1/2 TypeB
 MAS403-1982-BT/PT 2(30°)
 MAS403-1982-BT/PT 1(45°)
 Grippers type spring 30
 Static pull force 4,000 N

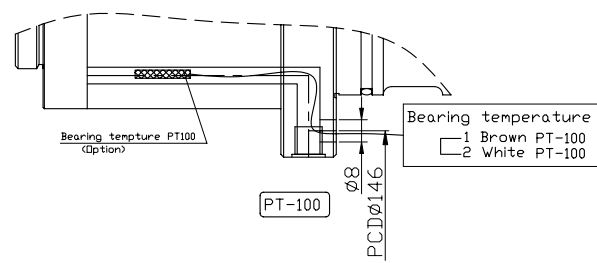
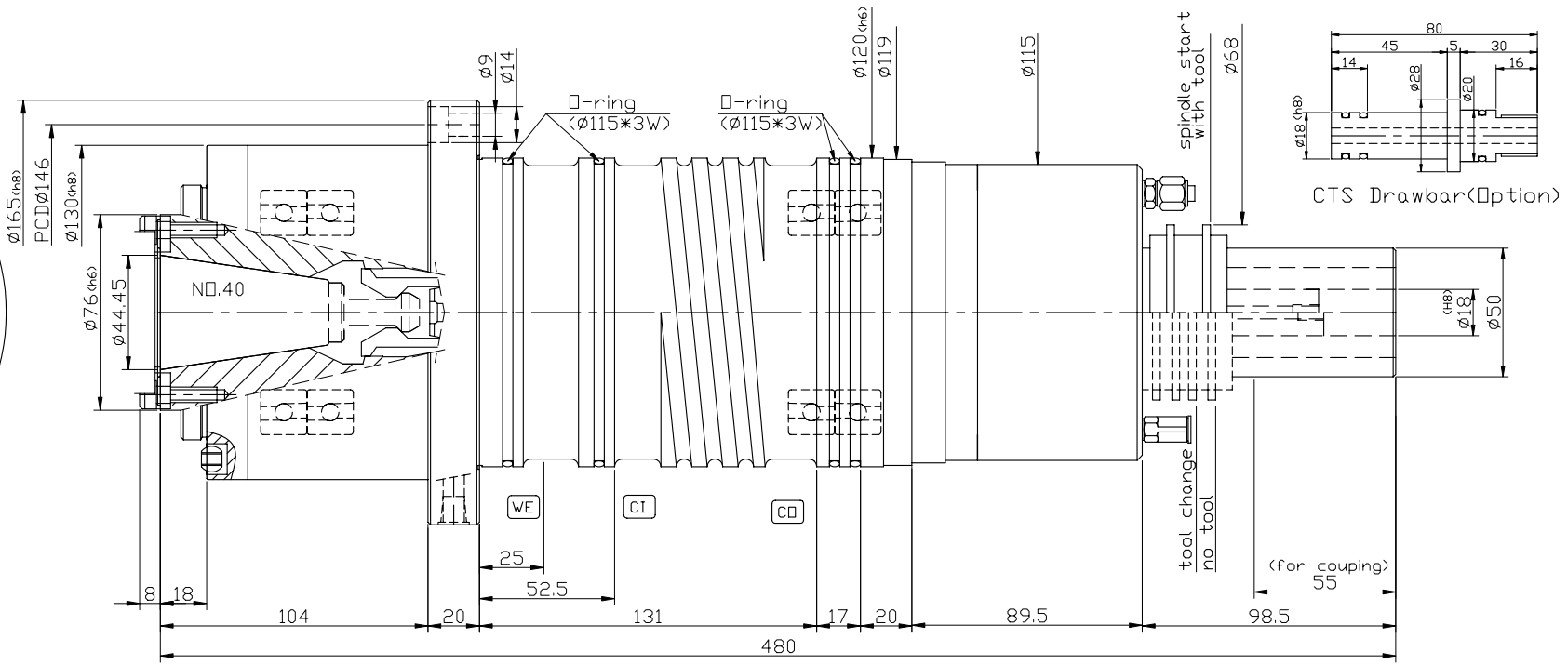
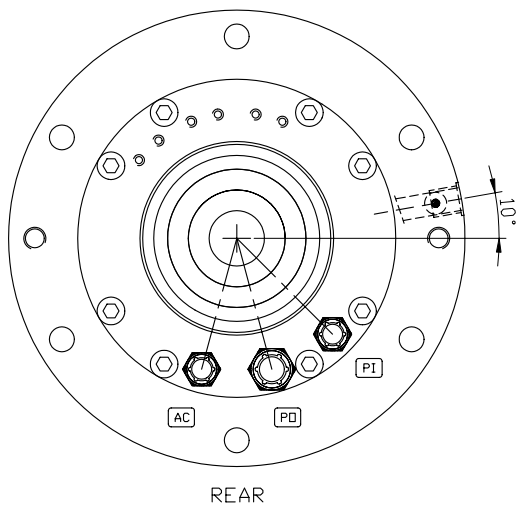
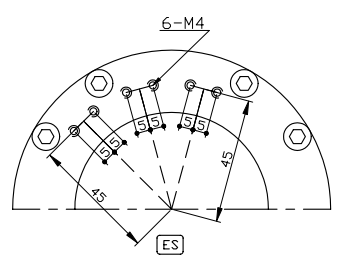
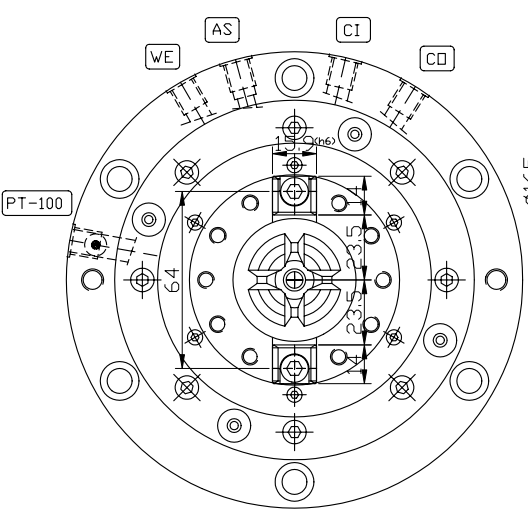
- CI** Motor Cooling in <5bar PT1/8 $\phi 8$ mm
- CD** motor Cooling return PT1/8 $\phi 8$ mm
- WE** EX coolant <20bar PT1/8 $\phi 12$ mm
- AS** purge air <2bar PT1/8 $\phi 6$ mm
- AC** Taper clean >5bar PT1/8 $\phi 8$ mm
- Cantion: through rotator union when with CTS.
- PD** Draw-bar release 1/4*1W-Dil pipe 50~80bar 60C.C. PT1/8
- PI** Draw-bar clamped PT1/8 $\phi 8$ mm 5~9bar
- ES** Draw-bar position Sensors

	RPM	Bearing	Preload	Lubrication	Pull-force(N)	Tool	Number
TYPE	10,000	B7012E	Spring	Grease	2,500	BT/BBT or ISO CAT SK	095.128.010.TE0
	12,000	HS7012E					095.128.012.TE0
	15,000	HC7012E					095.128.015.TE0
	20,000	HC7012E					095.128.020.TE0

PT-100 Bearing tempture (Option-2 line)

Itemref	Quantity	Title/Name, designation, material, dimension etc	Article No./Reference
Designed by	Checked by	Approved by - date	Filename
			Date
			Scale 1:1

CELLS Name D30-120E
 妻女木各系斗技支 Number 095.128.020.TE0 Edition Sheet

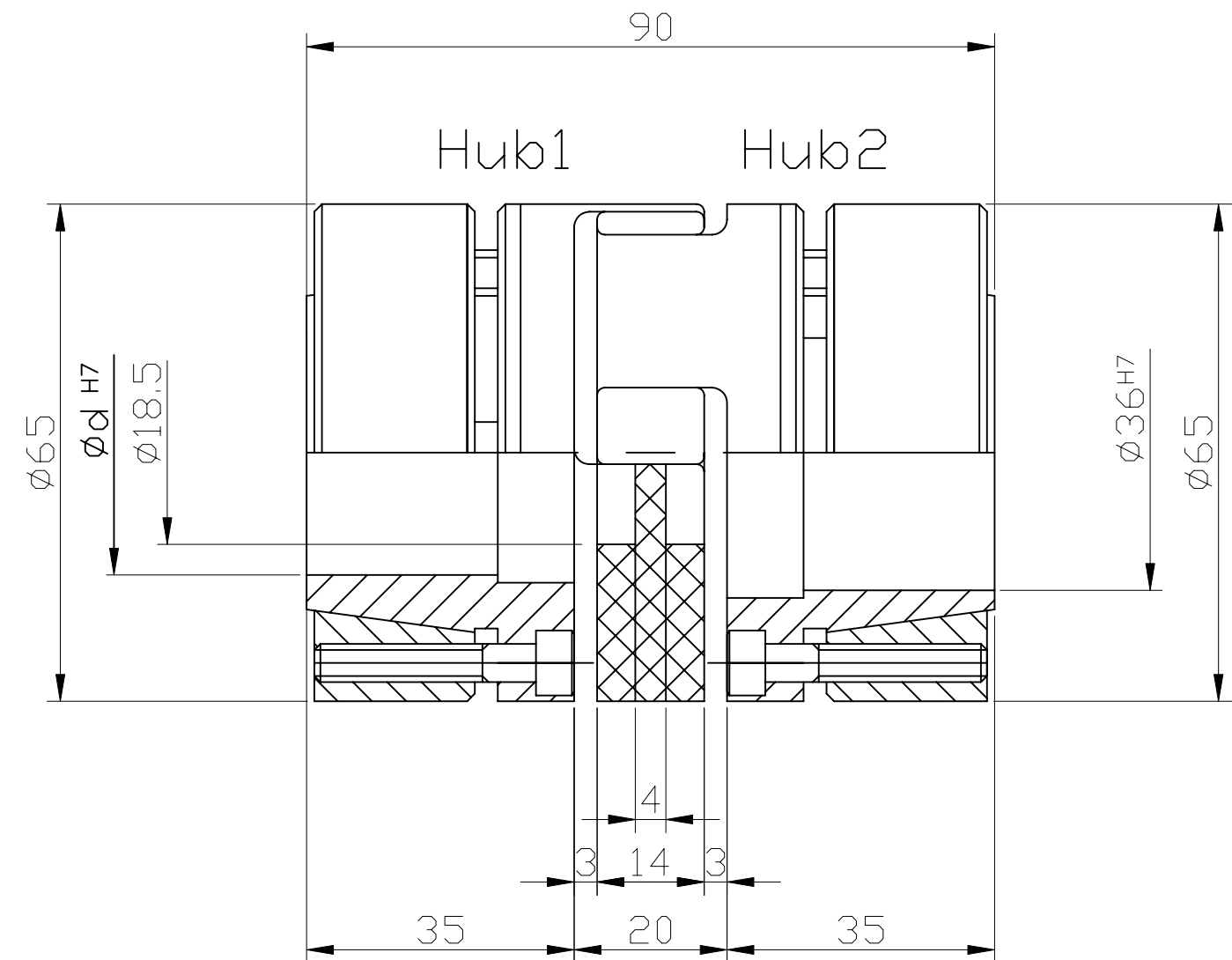


Tool holder standard
 Balance ISO 1940 part 1
 Tool type DIN69871/69872 ISO 7388/1/1 Type A
 ANSI B 5.50-78 ISO 7388/1/2 Type B
 MAS403-1982-BT/PT 2(30°)
 MAS403-1982-BT/PT 1(45°)
 Grippers type spring 40
 Static pull force 6,000 N

- CI Motor Cooling in <5bar PT1/8 ø8mm
- CD motor Cooling return PT1/8 ø8mm
- WE EX coolant <20bar PT1/8 ø12mm
- AS purge air <2bar PT1/8 ø6mm
- AC Taper clean >5bar PT1/8 ø8mm
 Cauton: through rotator union when with CTS.
- PD Draw-bar release 1/4*1W-Øil pipe 50~80bar 60C.C. PT1/8
- PI Draw-bar clamped PT1/8 ø8mm
- ES Draw-bar position Senors
- PT-100 Bearing tempreture (Option-2 line)

	RPM	Bearing	Preload	Lubrication	Pull-force(N)	Tool	Number
TYPE	10,000	B7012E	Spring	Grease	6,000	BT/BBT or ISO CAT SK	095.128.010.AE0
	12,000	HS7012E					095.128.012.AE0
	15,000	HC7012E					095.128.015.AE0
	20,000	HC7012E					095.128.020.AE0

Motor-end		Spindle-end	
Hub1 (mm)	Torque (N.m)	Hub2 (mm)	Torque (N.m)
∅28	445.0	∅50	858.0
∅32	525.0	∅50	858.0
∅42	647.0	∅50	858.0
∅42	647.0	∅50	858.0



Motor-end		Spindle-end	
Hub1 (mm)	Torque (N.m)	Hub2 (mm)	Torque (N.m)
∅28	445.0	∅50	858.0
∅32	525.0	∅50	858.0
∅42	647.0	∅50	858.0
∅48	836.0	∅50	858.0
∅50	858.0	∅50	858.0
∅55	858.0	∅50	858.0

